

Ollscoil Mhá Nuad
Maynooth University



Welcome to Maynooth University

Contents

- The Maynooth University Story
- Organisational Structure & Governance
- Our Vision, Purpose, Values and Goals
- Staff Benefits
- Wellbeing
- MU Onboarding
 - Your Buddy
 - What to expect during week one
 - MU Orientation
 - Networking
- Blended Working
- Courses and Resources
- FAQs



The Maynooth University Story



**Welcome to your new
place to work**

Maynooth University

...is a distinctive, innovative,
socially responsive, collegial,
and also a challenging
institution

...it espouses the traditional
Newman ideals of university
education in a modern context
and has achieved strong and
credible recognition as a major
player in Ireland's Higher
Education sector, and
internationally in niche areas

...it has a clearly articulated
and widely shared strategy for
growth and further refinement,
and is well positioned to
address the challenges that lie
ahead

Identity – The Logo



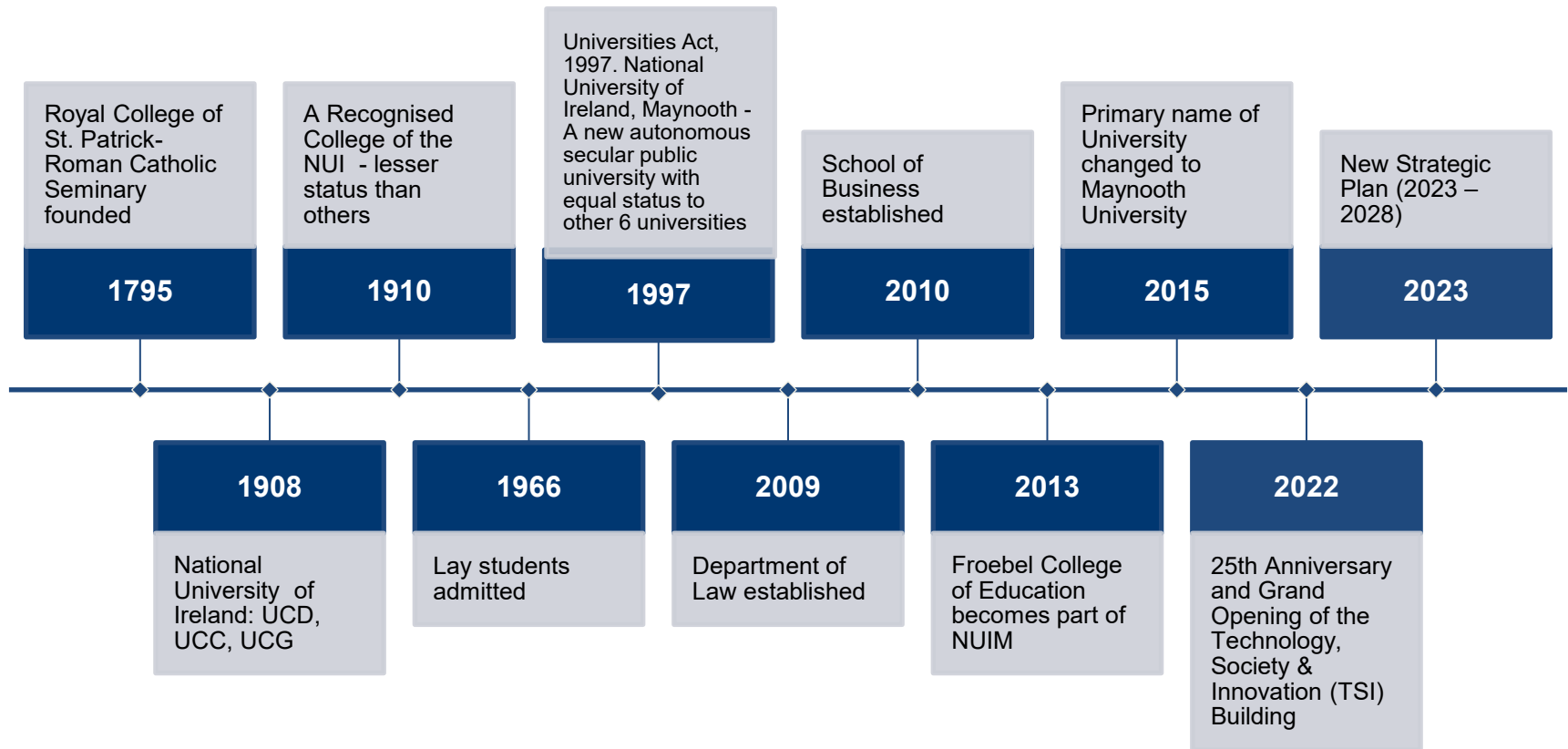
The Castle – tradition & historical roots

Leaf – from yew tree of wisdom

Sundial – the light and energy

Book – study, research and scholarship

History Timeline



Students and Staff*

- c.16,110 students – this includes 1,200 MIEC Fuzhou students (2023/2024)
- Student population increased by over 60% in last 10 years, from ~9,800 in 2012/13 to ~15,770 in 2021-22
- 85% Undergraduate (UG) and 15% Postgraduate (PG) (FTEs**)
- Approx. 3,800 students not Irish by citizenship; 2,700 not Irish by domicile
- 11% of students from disadvantaged areas based on HEA Deprivation Index Scores which measures relative affluence or disadvantage of a geographical area (2020/21 latest available)
- 9% of all students are flexible learners (PT, remote)
- c. 1,300 Staff

* (2023-24 AY)

** FTE - Full Time Equivalent

Position in Higher Education

- One of seven (IUA) universities – distinctive in profile
- Leader in widening participation
- 2024 Times Higher Education World University Ranking – 401-500
- 2025 QS World University Ranking – 801-850
- Strong on collaboration:
 - Locally with St. Patrick's College
 - Arqus Alliance
 - DkIT letter of intent
 - National & International Research Networks

Campus Masterplan

Envisions how the campus will grow and change over the coming two decades

- The physical environment of the campus—historic and beautiful in its heritage, yet modern and dynamic in its recent development—is key to the nature, success and sustainability of both the Maynooth University learning community and the very special community of Maynooth in which we reside.
- The final Maynooth University Campus Master Plan incorporates feedback and suggestions that emerged from a comprehensive consultation process in the spring of 2016 with staff, students and the local community. That process was critical in stimulating discussion about the look, feel and purpose of the future Maynooth University campus. Those conversations will prove invaluable in the years ahead, as we endeavour to design and develop the 'Maynooth Experience' for all.
- The fundamental objective of the Master Plan is to sustain and develop a clear sense of 'place' and to project a clear sense of identity as a university built on 200 years of history yet preparing a vision to 2025 and beyond.

Green Campus

Maynooth Green Campus was awarded the Green Campus Flag in 2018 and the 2nd Green Flag in 2023. The Flag is an international award under a scheme coordinated by the Foundation for Environmental Education, based in Copenhagen. The Flag is awarded to third level colleges that satisfy an assessment of progress undertaken by An Taisce.

Read more about our Green Campus strategy

[Green Campus | Maynooth University](#)



Athena Swan

Maynooth University is proud to hold an Athena SWAN Bronze Institution Award (Expanded Charter), which recognises that the institution has a solid foundation for eliminating gender bias and developing an inclusive culture that values all staff



Research in MU

MU Research and Innovation Report 2024.
This [report](#) presents an essential narrative
of what we value most in carrying out our
research and scholarship

- 225 research grants awarded (2022 -2023)
- Total value of Research grants awarded €38.1m;
- Publications - Total (SCOPUS) **1,103**
- 16% of publications in the top 10% most cited publications worldwide by FWCI;
- 24 License Agreements;
- 2 Patents filed;
- 7 Invention Disclosures;
- 84 Research Graduates;
- 130 New Postgraduate Research students.

Research in MU

A range of Interdisciplinary Research
Beacons, Institutes and Centres

Beacons

1. Data Science and Digital Transformation
 - The Hamilton Institute
 - Innovation Value Institute (IVI)
2. Health and Wellbeing
 - Kathleen Lonsdale Institute for Human Health Research
 - Innovation Value Institute (IVI)
 - Assisting Living & Learning
 - The Hamilton Institute
3. Sustainability and Climate Change
 - Irish Climate Analysis and Research UnitS (ICARUS)
 - Centre for Ocean Energy Research (COER)
4. Society and Public Policy
 - MU Social Sciences Institute
5. Heritage, Culture and Languages
 - MU Arts and Humanities Research Institute

Science Foundation Ireland Research Centres @Maynooth



ICARUS
Climate
Research
Centre

Assisting
Living and
Learning
Institute

Centre for
Ocean
Energy
Research

MaREI



CONNECT

iForm

INSIGHT

SSPC

Hamilton Institute
AI
Data Science
IoT and Comms

Innovation
Value
Institute

LERO



National
Centre for
Geocomputa
tion

iCRAG



Human Health
Institute
Immunology
Biochemistry
Pharmaceuticals

Social Sciences
Institute
Technology and
Society

ADAPT



Arts and Humanities
Institute



University Structure & Governance

University Governance

- The decision-making body in the University is the **Governing Authority**. It has responsibility for the strategic direction of the University, the management and administration of its revenue and property and the general conduct of its affairs.
- Members of the Governing Authority are drawn from the staff, students, graduates and external organisations.
- It normally meets 6 times a year and receives reports from a range of committees including: Audit & Risk Assessment Committee, Finance, Human Resources and Campus Development Committee, Quality Committee, EDII* Committee and the Remuneration Committee.
- The Governing Authority is chaired by an external chairperson or in their absence, the deputy chairperson and adheres to the Governance of Irish Universities 2012 (published jointly by the HEA and IUA) as its primary code of practice. Dr. Mary Canning is current Chair of the Governing Authority. [Membership | Maynooth University](#)

*EDII – Equality, Diversity, Inclusion and Interculturalism Committee

President of Maynooth University

Professor Eeva Leinonen



University Executive

The President, is the Chief Officer of the University, overseeing all operations from teaching and research to capital development and international initiatives. They are responsible for setting the future direction and goals for the University, reporting to the Governing Authority.

Chaired by the President, the University Executive (UE) is a team of academic and administrative leaders, the purpose of which is to support the President in their role as Chief Officer, by providing collective leadership and management for the University Community.

The University Executive assists the President in developing, implementing and reviewing the University Strategic Plan, and in managing the academic, administrative, financial and other activities of the University.

University Executive

President

Deputy President

Vice - President Academic, Registrar

Bursar/Secretary

Chief of Staff

Vice-President External Affairs

Vice-President for Research and Innovation

Vice-President for Equality & Diversity

Vice-President International

Vice-President Students & Learning

Dean of Arts and Humanities

Dean of Social Sciences

Dean of Science & Engineering

Director of Human Resources

Academic Council

- The Academic Council, subject to review by the Governing Authority, controls the academic affairs of the University, including the curriculum of, and instruction and education provided by, the University.
- It is chaired by the President, and includes the Vice-Presidents, Registrar, Deans, Heads of Schools and Departments, the University Librarian, and representatives of all grades of academic staff and students. It is supported in its activities by a committee structure and by Faculties.

Faculties

There are 3 Faculties, which act as advisory bodies to the Academic Council. In addition, Council has formally delegated some of its powers to Faculties.

Each Faculty is headed up by a Dean.

Each department/school has a Head of Department/School.

Faculty of Arts & Humanities

Ancient Classics
English
History
Media Studies
Music
Philosophy
School of Celtic Studies

- Early Irish/Roinn na Sean-Ghaeilge
- Roinn na Nua-Ghaeilge/Modern Irish
- Lárionad na Gaeilge
- Irish Cultural Heritage

School of Modern Languages, Literatures and Cultures

- Chinese Studies
- French Studies
- German Studies
- Spanish & Latin American Studies

Faculty of Social Sciences

Adult and Community Education
Anthropology
Applied Social Studies
Design Innovation
Economics
Education
Froebel Department of Primary and Early Childhood Education
Geography
International Development
School of Law & Criminology
School of Business
Sociology

Faculty of Science & Engineering

Biology
Chemistry
Computer Science
Electronic Engineering
Mathematics and Statistics
Psychology
Physics
School of Nursing
Sports Science and Nutrition



Vision, Purpose, Values & Goals

Strategic Plan

View the Strategy 2023 – 2028

[Maynooth University Strategic Plan |](#)

Our Vision and Purpose

Our Vision - To be a university of excellence, opportunity and impact

Our Purpose - To imagine and create better futures for all

Our Values

Integrity

We act with integrity in the best interests of our University.

Collegiality

We are a collegial community with a shared purpose which we pursue with empathy, respect and an ethos of care.

Responsibility

We are a community where we are empowered to take agency and responsibility for our individual and collective actions within an open and transparent environment.

Freedom of Expression

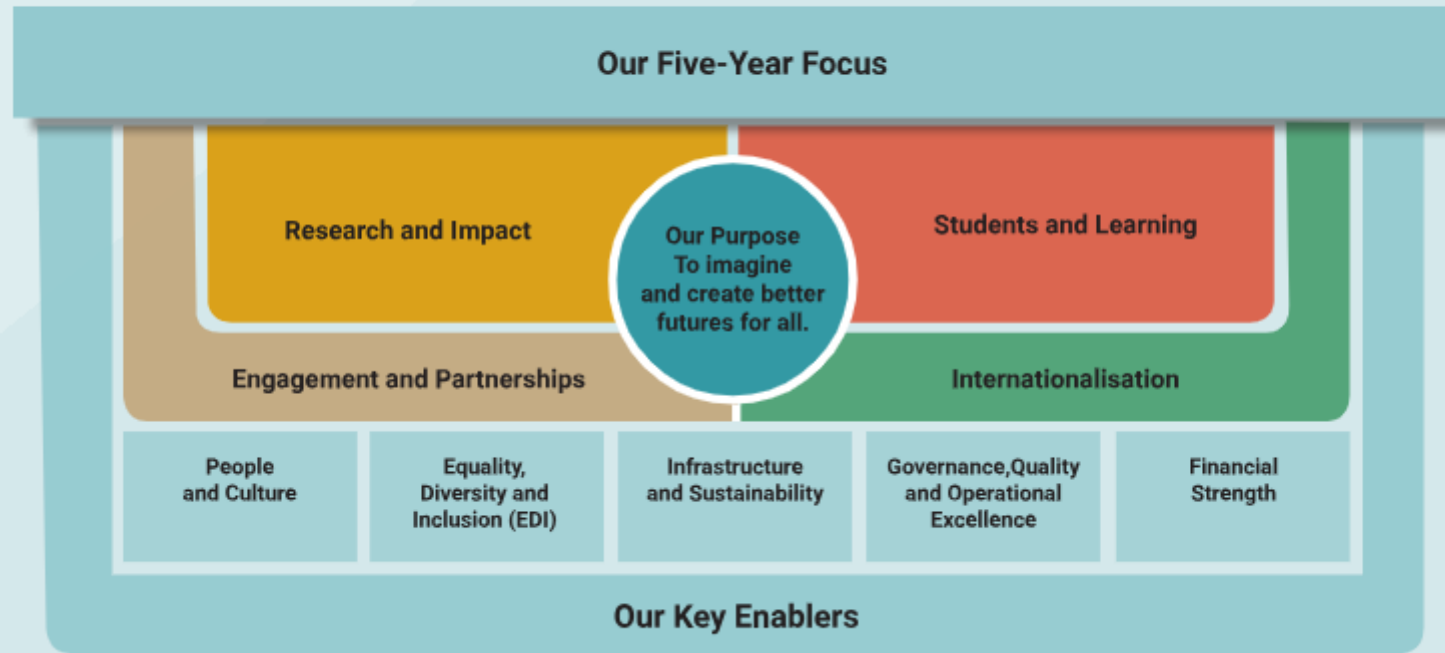
We enquire and express ideas freely, with civility and responsibility.

Ambition

We have an ambitious, flexible and innovative mindset when seeking opportunities and responding to challenges.

Strategic Plan

Strategic Plan at a Glance





Staff Benefits

Staff Benefits

Competitive Salaries - Salary Scales
Public Service Pension Scheme

Voluntary Income Protection

Voluntary Life Assurance Plans

Public Sector Annual Leave and Flexible Working Policies

Shorter Working Year Scheme

Enhanced Maternity Leave

Enhanced Paternity Leave

Group Discount Schemes

Serviced by excellent public transport options

Cycle to Work Scheme

Travel Pass Scheme

Access to the MU Library
Sabbatical Opportunities

Service Excellence & Innovation Awards

People Development

- Further Education Support
- Study & Examination leave
- Cross-skilling opportunities
- e-learning
- Mentoring
- Coaching
- On the job training
- Competency based training
- Developmental Review

Staff Wellbeing seminars/initiatives and supports

Focus on Equality, Diversity and inclusion

Healthy Campus

Green Campus

Beautiful campus walks

Free Irish language classes and

Sean-nós singing workshops

Staff Restaurant

On-site sports centre free for staff

On-site Crèche

On-site restaurants and coffee shops

Facilitation of Life Credit Union loan deductions from salary

Facilitation of VHI payments from salary



Wellbeing

Wellbeing

Self - care needs will be different for each person.

MU provides a framework with a number of practices which may be supportive to your self-care.

- Time in Nature – walks
- Wellbeing seminars on a variety of topics
- Online Wellbeing Hub
- Information Library on a range of topics
- E-learning courses
- Counselling service
- Advice services
- Healthy Campus

For information on wellbeing, view [Wellbeing | Maynooth University](#)

Wellbeing

Lena by Inspire – Employee Assistance Programme

Lena by Inspire is a support service provided by the University for staff. The programme provides a **fully confidential** counselling service, designed to assist staff in dealing with any issue that adversely affects their health, wellbeing, personal or professional life.

If you have a problem that is troubling you, then you can get help and support by contacting Inspire Workplace Services 24 hours/365 days free phone number **1800 201 346** or emailing **support@lenabyinspire.com**

Lena by Inspire Online Support Hub

[Maynooth University's Workplace Services Hub](#).



New MU Staff Onboarding

Your Buddy

Each new staff member should be assigned a support colleague 'buddy'.

This person should be someone who can help orient the new person, share knowledge, help them settle in and show them around. They do not need to know the person's role or be a mentor and will act more as a support to show them where and who to contact for information

- Characteristics of a good support colleague 'buddy'
 - Has a well-rounded knowledge of the University and its purpose and values
 - Has a willingness to be a support for the new staff member
 - Has the time to be accessible to the new staff member
 - Has good communications and interpersonal skills
 - Has a positive attitude

If you have not been assigned a *Buddy* ask your Head of Department/Manager who could be assigned to support you.

Week 1

Before you start

It is recommended that new staff prepare themselves for working in Maynooth University by reviewing the 'Come Work with Us' and the 'Before You Get Started' sections of the Human Resources webpage before their first day in MU. ([Human Resources | Maynooth University](#))

First week

We recommend you start on the first week with a local induction, getting to know the department/area you are working in. Then become familiar with the structures and strategy/goals of the Department and the University. The next step is getting to know the role and what is expected of you.

We have a [guide and checklist](#) to support you.

Compliance Training

☐ Health & Safety Training

[Health & Safety Training | Maynooth University](#)

☐ Data Protection Course

[Online GDPR Training for Staff | Maynooth University](#)

☐ Information & Data Security

[Information Security Awareness Program | Maynooth University](#)

☐ Equality, Diversity and Inclusion Course

[Vice President for Equality and Diversity | Maynooth University](#)

☐ Consent Awareness for Staff

https://youtu.be/gWvQs_MRjg8

MU Orientation

The University Orientation runs every March and October. It is for all new staff to welcome them and provide them with key information on working in the University. Participants will have an opportunity to ask questions, for discussion and to meet other new colleagues.

Topics include:

- ☐ The President's Welcome
- ☐ University Academic Administration
- ☐ Student Services
- ☐ About the University
- ☐ Keeping Maynooth University Secure
- ☐ IT Services
- ☐ Human Resources - People Management Support Services & Policies
- ☐ Equality, Diversity and Inclusion in Maynooth University
- ☐ An Introduction to Campus and Commercial Services
- ☐ Communications and Marketing
- ☐ Finance & Procurement
- ☐ An Ghaeilge in Ollscoil Mhá Nuad: Engaging with the Irish Language on Campus
- ☐ A tour of the Russell Library
- ☐ MU Library: Services and useful resources

The Research Development Office and HR run an additional orientation session for Researchers & Academics

To book your place - Log in to your [Employee Self Service](#) portal

Networking

Come along to our new staff networking events throughout the year. Dates and location will be sent to new staff and are on the [Course Directory](#).

These events are aimed at new staff who are 12 months or less in the organisation. The purpose of the 'catch ups' are to meet other new colleagues, build your network, discuss challenges facing new staff and find out information useful to new staff in an informal setting.

Topics

March – Developmental Review (DR)

June - Green Campus

September - Statutory Leave

November - Pensions

A light lunch is followed by a presentation on one of the topics above and time for Q&A.

To book your place - Log in to your [Employee Self Service](#) portal

Blended Working

Interim blended working arrangements are in place in the university. For information on the scope, principles, what blended working looks like and how to apply please view the Human Resources website.

[Interim Blended Working Arrangements | Maynooth University](#)

Courses and Resources

View the *Come Work with Us* and *New Employees* section of the HR website

[Human Resources | Maynooth University](#)

Read Induction Information and Checklist for New Staff of Maynooth University

[New Employees | Maynooth University](#)

Checklists and Supports for Occasional Staff

[Occasional Staff | Maynooth University](#)

Staff Wellbeing – Inspire Workplace Services

[Wellbeing | Maynooth University](#)

Courses and Resources

MU Course Directory

[Staff Courses | Maynooth University](#)

People Development, HR

[People Development | Maynooth University](#)

Centre for Teaching & Learning

[Centre for Teaching and Learning | Maynooth University](#)

Useful University Contacts

Campus Contacts	Phone Number	Email
Security	+353(0) 1 708 3929 (add this to your mobile phone)	campus.security@mu.ie
Emergency Call	+353(0) 1 708 3333	
Campus Services	+353(0) 1 708 3930	maintenance@mu.ie
Irish Emergency Services	999	
People Development	+353(0) 1 708 4570	people.development@mu.ie
Recruitment		recruitment@mu.ie
Payroll	+353(0) 1 708 6141/ 3448/ 6625	payroll@mu.ie
IT Services Helpdesk	+353(0) 1 708 3388	servicedesk@mu.ie
Research Development Office	+353(0) 1 708 6682	Research.development@mu.ie
Centre for Teaching and Learning	+353(0) 1 708 6770	teachingandlearning@mu.ie
Moodle Support		moodlesupport@mu.ie
Audio Visual Technical Support	+353(0) 1 708 6398	Andrew.Moloney@mu.ie

Campus Facilities

Restaurants

Phoenix Building

Food Court, Coffee Dock & Staff Restaurant

John Hume Building/Arts Building/TSI Building

Griolladh/Nourish/53.3 Degrees

Students' Union Bar

The only bar on campus offer food and drinks to Maynooth University students, staff and guests.

Pugin Hall

Self-service canteen for staff and students of Maynooth University situated in St. Patrick's House on the historic Campus South.

Starbucks (John Paul II Library)

Other facilities

Maynooth University Crèche

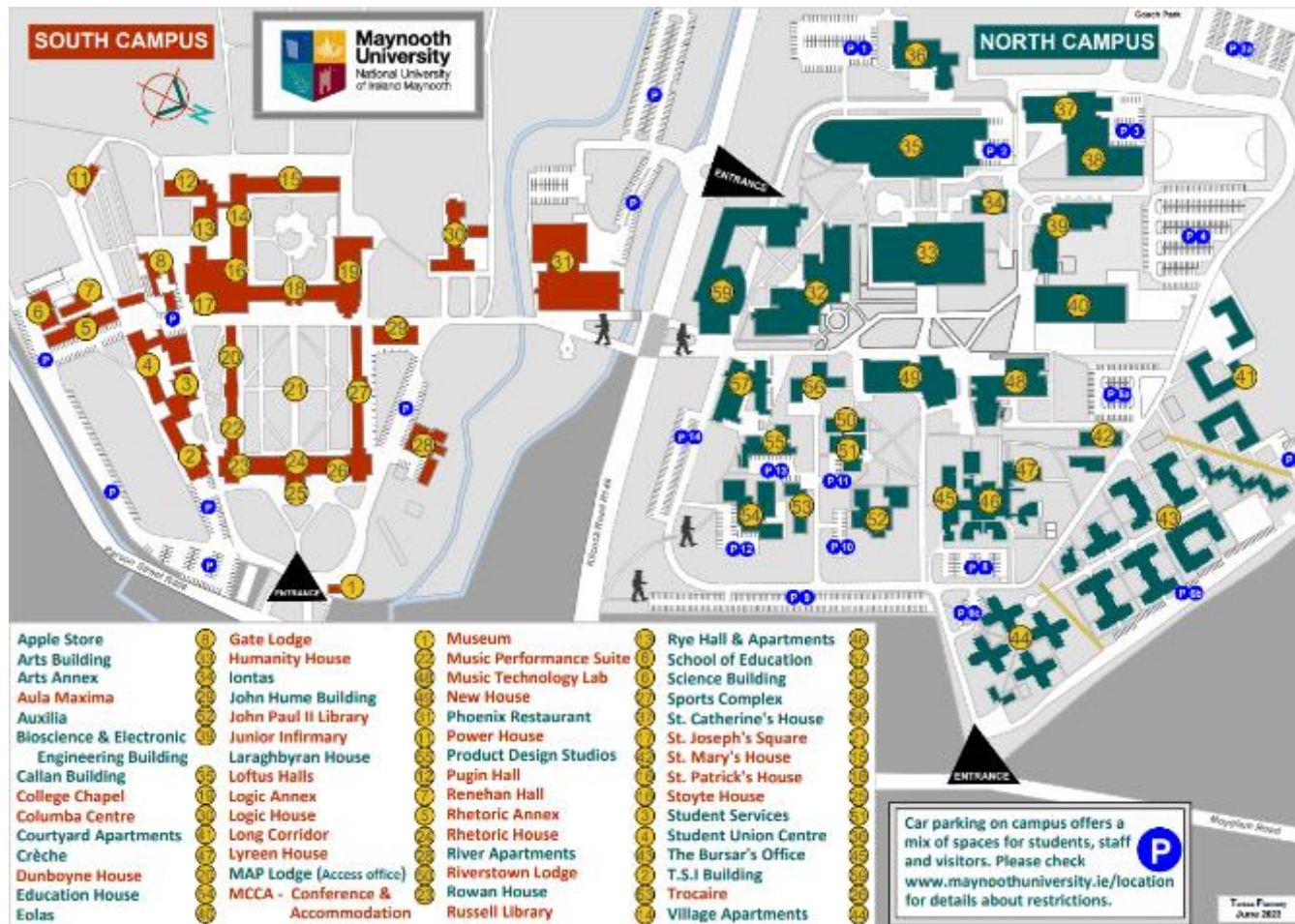
Our crèche is available to staff and students at the university. We cater for children aged from 1 year up to school going age.

Parking

We offer Staff Parking Permit for €40 per year.

[Apply for a permit | Maynooth University](#)

Campus Maps



[Campus Map](#) | [Maynooth University](#)

Frequently Asked Questions

FAQ'S

Your New Place to Work

