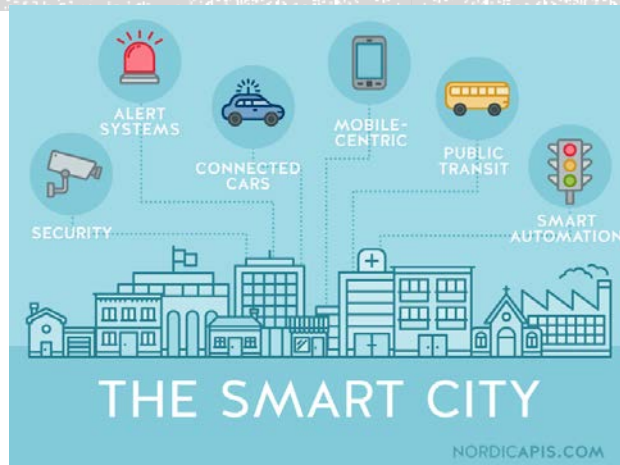


DEPARTMENT OF SOCIOLOGY

M.A. Societies in Transition (MAST)
M.A. Internet & Society (MAIS)

New 2018 * Grad Diploma options
Closing Date: 30th June (via PAC)
@MU_Sociology



M.A.S IN SOCIOLOGY

- **One year full-time** - aims to provide graduates with the necessary **critical and analytical skills** to make sense of social change.
- **Classes:** Seminars & computer lab workshops, grouped into two days
- **Assessment:** Continuous assessment + thesis
- **Required:** BA Hons 2.1 level or above.
- **Backgrounds:** Social science, humanities, or similar disciplines



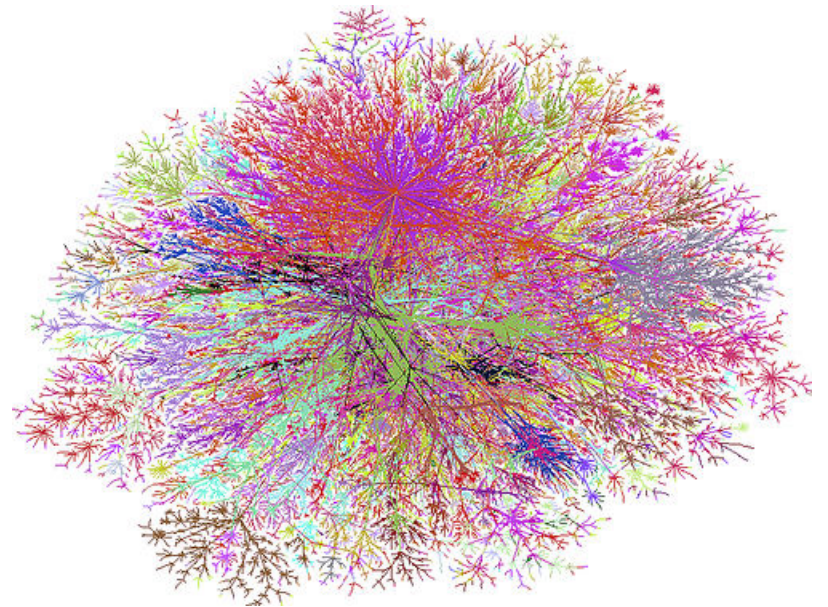
RESEARCH METHODS MODULES

- **Both MAs**

- Qualitative research – interviews, ethnography and use of MaxQDA
- Quantitative – Surveys & use of SPSS

- **MAIS –**

- Advanced Digital methods – e-interviews, virtual ethnography, social media data analysis



THESIS

- Thesis workshops
- Research proposal by Christmas
- Assignment of supervisor after Christmas
- Dissertation - 17,000-20,000 words and based on original research
- Final dissertation due July 30



MA INTERNET & SOCIETY



MA INTERNET & SOCIETY

Core

Business and Cultures of the Internet – Semester 1

Social Science Analysis – Semester 1

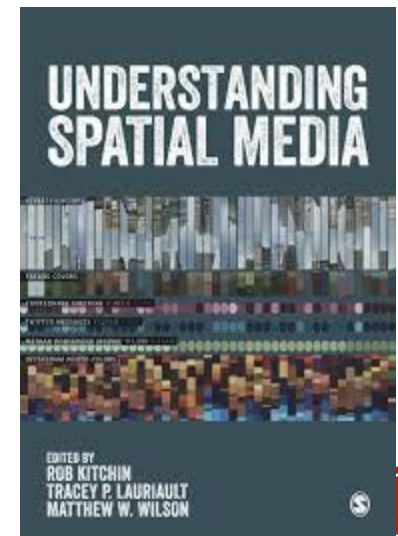
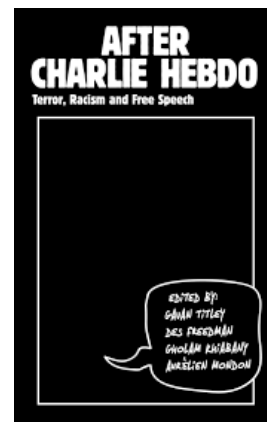
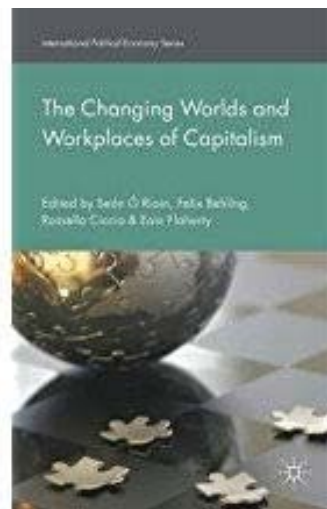
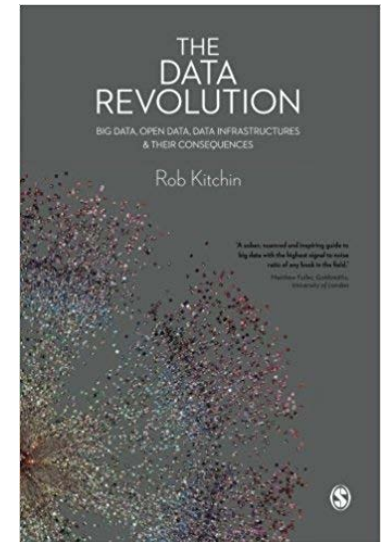
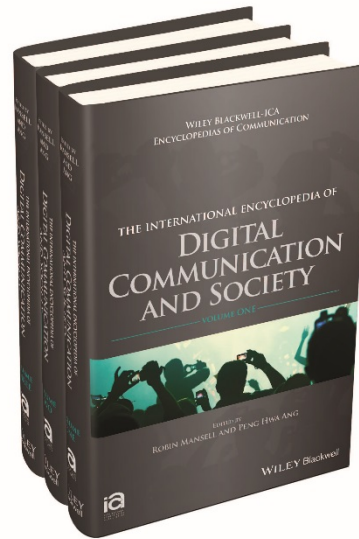
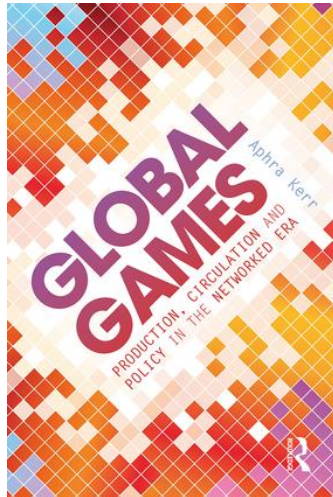
Advanced Digital Research Methods – Semester 2

Thesis – all year

Department	Options – Choose 3
Soc	Quantitative Research Methods
	Qualitative Research Methods
Law	Information Technology Law
	Information Privacy Law
Soc	Political Economy (esp. Work)
Media	Media Publics
Geog	Critical Data Studies



EXPERT LECTURERS

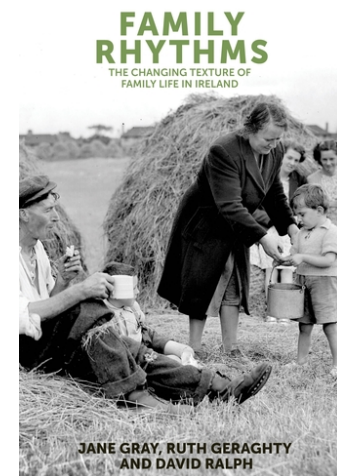
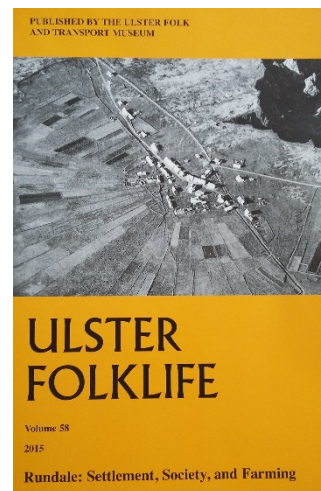
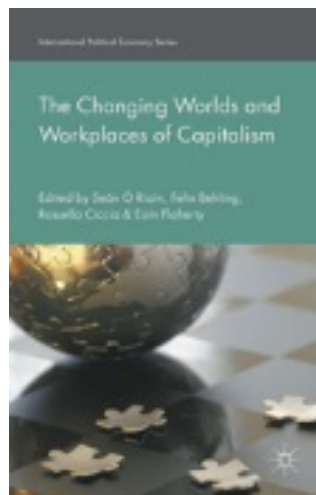


SEE MAIS GRADUATE DISCUSSES COURSE



MA SOCIETIES IN TRANSITION

- Theories, Concepts and Debates in their Historical and Contemporary Context
- Social science Analysis
- Political Economy
- Nature & Society



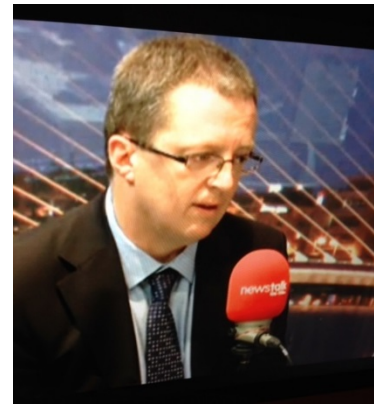
CAREERS

- **Research** – public & private sector
- **Public Policy** – NGOs, state, private sector
- **Academia** – as a stepping stone into further postgraduate studies
- See testimonials on our website at www.maynoothuniversity.ie/sociology



WHY SOCIOLOGY AT NUIM?

- The first Sociology Department on the island of Ireland
- Publicly Engaged.
- A vibrant intellectual community for students –seminars, talks and social events.
- Postgraduate students have the use of designated teaching, social and computer facilities in the Department.



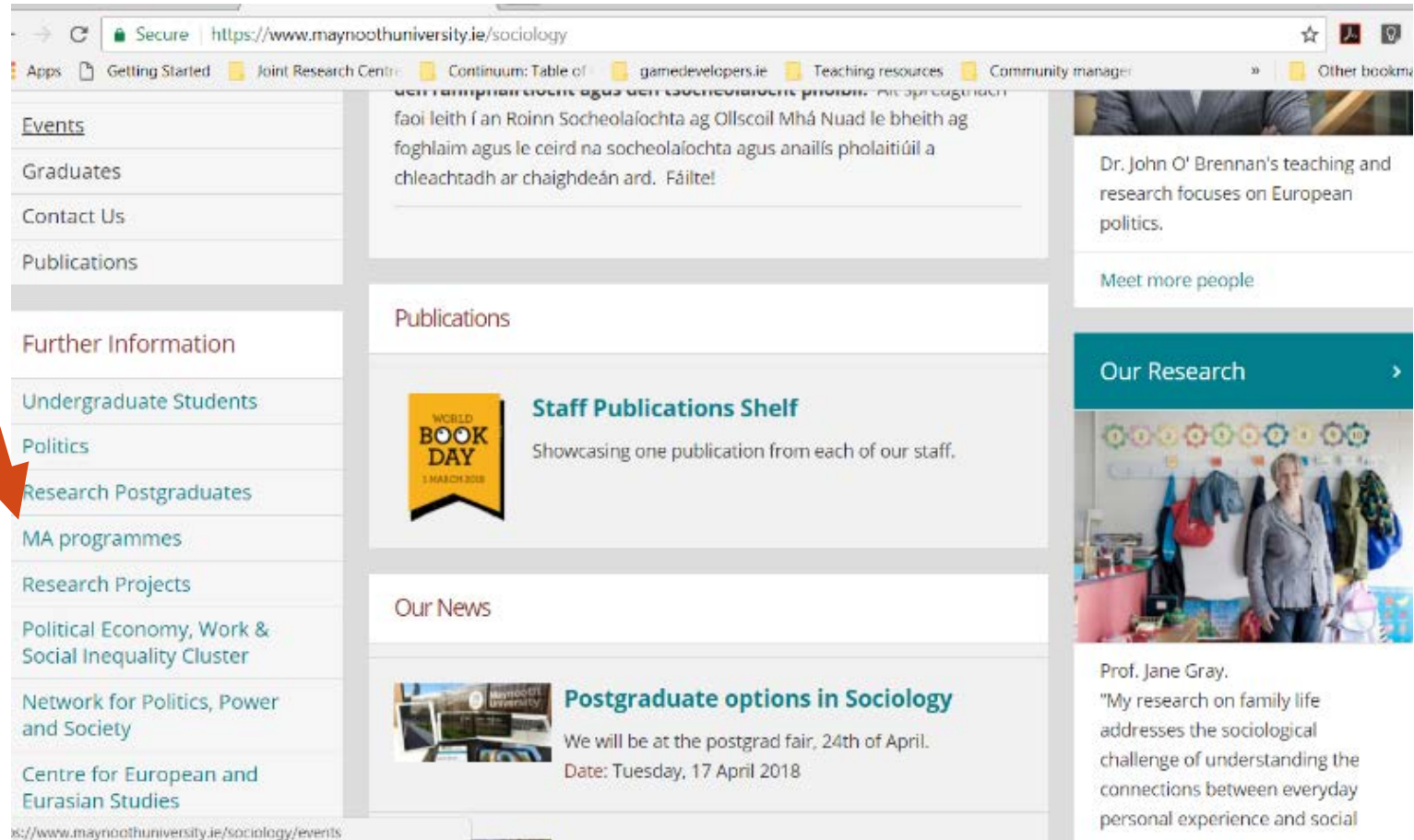
MORE INFORMATION

- **MA Societies in Transition (MAST)** –
MHY50 – Contact: Prof. Jane Gray
- **MA Internet & Society (MAIS)** –
MHY56 – Contact: Dr. Aphra Kerr
- # **MLitt or PhD (by research)** – Contact:
Prof. Honor Fagan or any member of staff



MORE INFO- PROGRAMMES

[HTTPS://WWW.MAYNOOTHUNIVERSITY.IE/SOCIOLOGY/MA-](https://www.maynoothuniversity.ie/sociology/ma-)



The screenshot shows the Maynooth University Sociology website. A red arrow points to the 'Research Postgraduates' link in the left sidebar. The main content area includes a section for 'Publications' with a 'Staff Publications Shelf' featuring a 'World Book Day' badge and a 'Postgraduate options in Sociology' announcement. The right sidebar features a profile for Dr. John O' Brennan and a section for 'Our Research' featuring Prof. Jane Gray.

Secure | <https://www.maynoothuniversity.ie/sociology>

Apps | Getting Started | Joint Research Centre | Continuum: Table of | gamedevelopers.ie | Teaching resources | Community manager | Other bookmarks

Events
Graduates
Contact Us
Publications

Further Information
Undergraduate Students
Politics
Research Postgraduates
MA programmes
Research Projects
Political Economy, Work & Social Inequality Cluster
Network for Politics, Power and Society
Centre for European and Eurasian Studies

Publications

Staff Publications Shelf
Showcasing one publication from each of our staff.

Our News

Postgraduate options in Sociology
We will be at the postgrad fair, 24th of April.
Date: Tuesday, 17 April 2018

Dr. John O' Brennan's teaching and research focuses on European politics.
Meet more people

Our Research

Prof. Jane Gray.
"My research on family life addresses the sociological challenge of understanding the connections between everyday personal experience and social

@MU_Sociology



PAC CODES — CLOSING 30TH OF JUNE

[English/As Gaeilge](#)



[Home](#) | [Apply](#) | [FAQ](#) | [Contact](#)

Postgraduate Taught Programmes

Taught ▼

Please enter partial course title/keyword(s):

MHY

[Search](#)

[Start over](#)

Course	Description	
MHY54	MA Sociology (Societies in Transition)	Apply
MHY56	MA Sociology (Internet and Society)	Apply
MHY60	Pg Dip in Sociology (Internet & Society)	Apply
MHY61	Pg Dip in Sociology (Internet & Society)	Apply
MHY62	Pg Dip Sociology (Societies in Transition)	Apply
MHY63	Pg Dip in Sociology (Societies in Transition)	Apply

Welcome to the Postgraduate Programmes 2018 Entry at Maynooth University



[Postgraduate Maynooth University](#)

[Maynooth University Home](#)

FUNDING & SCHOLARSHIPS

- **MA Scholarships (alumni and MA)**
- Closing Date = 15th of June

More info: <https://www.maynoothuniversity.ie/study-maynooth/postgraduate-studies/fees-funding-scholarships/taught-masters-scholarships>

