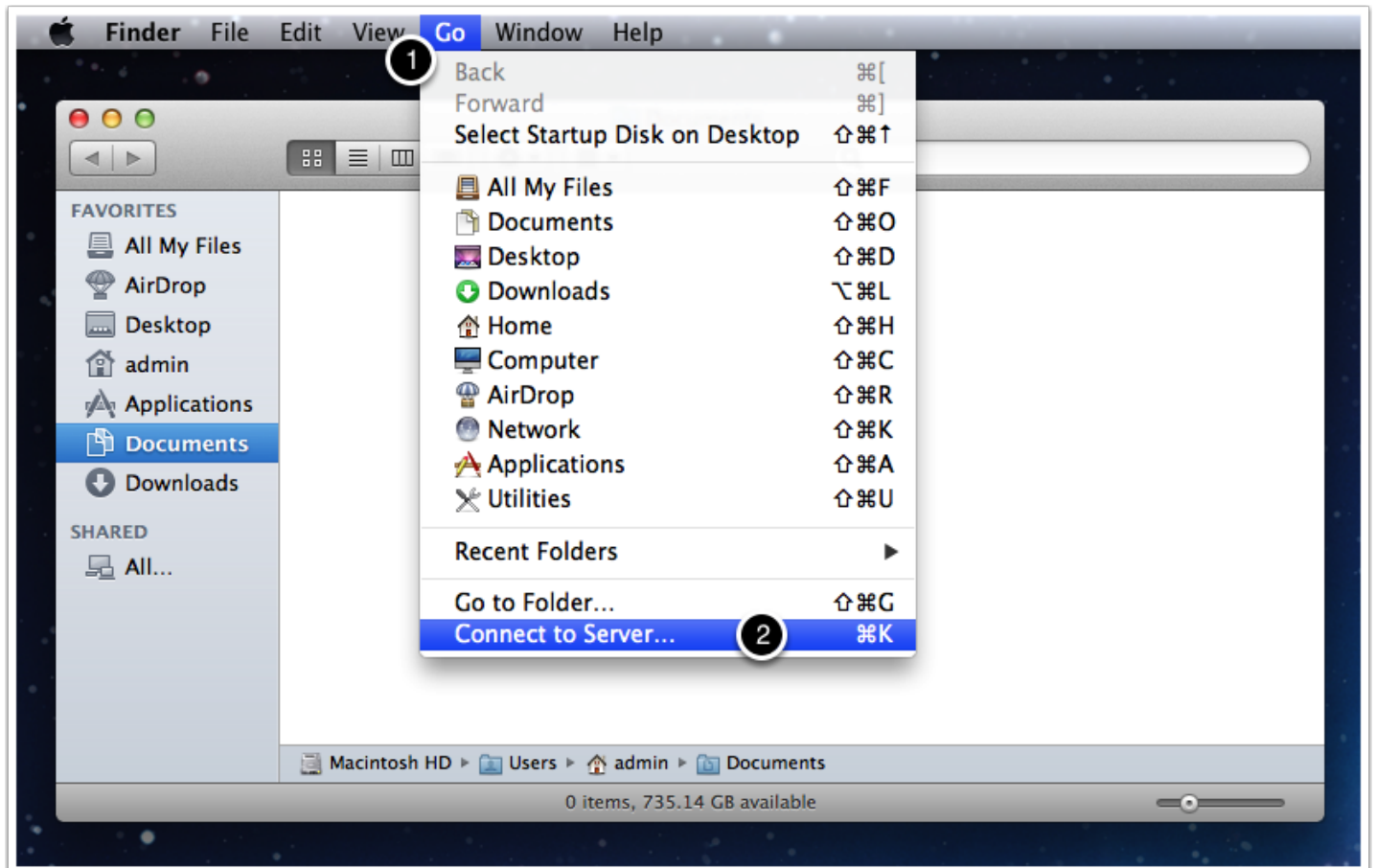


Map A Share on Mac OS X

Open the Finder & Choose Connect to Server...

Start by opening the Finder. Click on the **Go** menu, and choose **Connect to Server...**

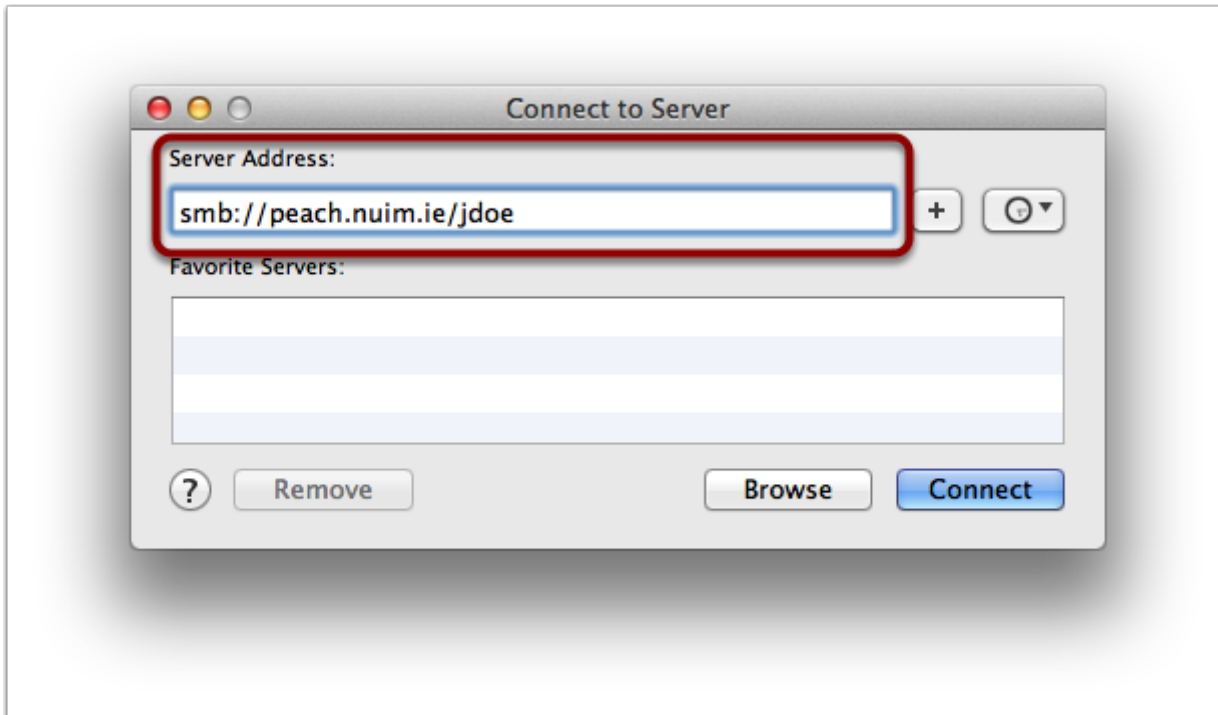
The equivalent keyboard shortcut is **cmd+k**.



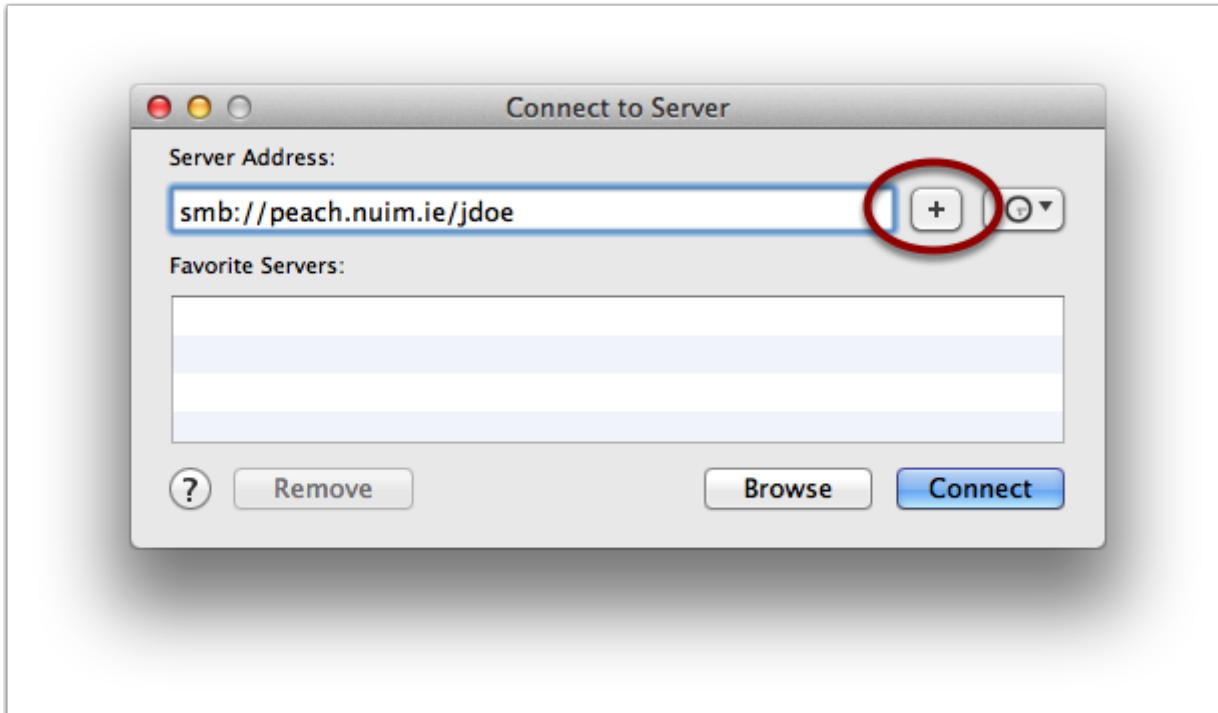
Enter the Address for the Share

In the dialogue that opens, enter the URL for the share you wish to map. Your X drive will have a URL of the form **smb://peach.nuim.ie/[username]**, e.g. **smb://peach.nuim.ie/jdoe**.

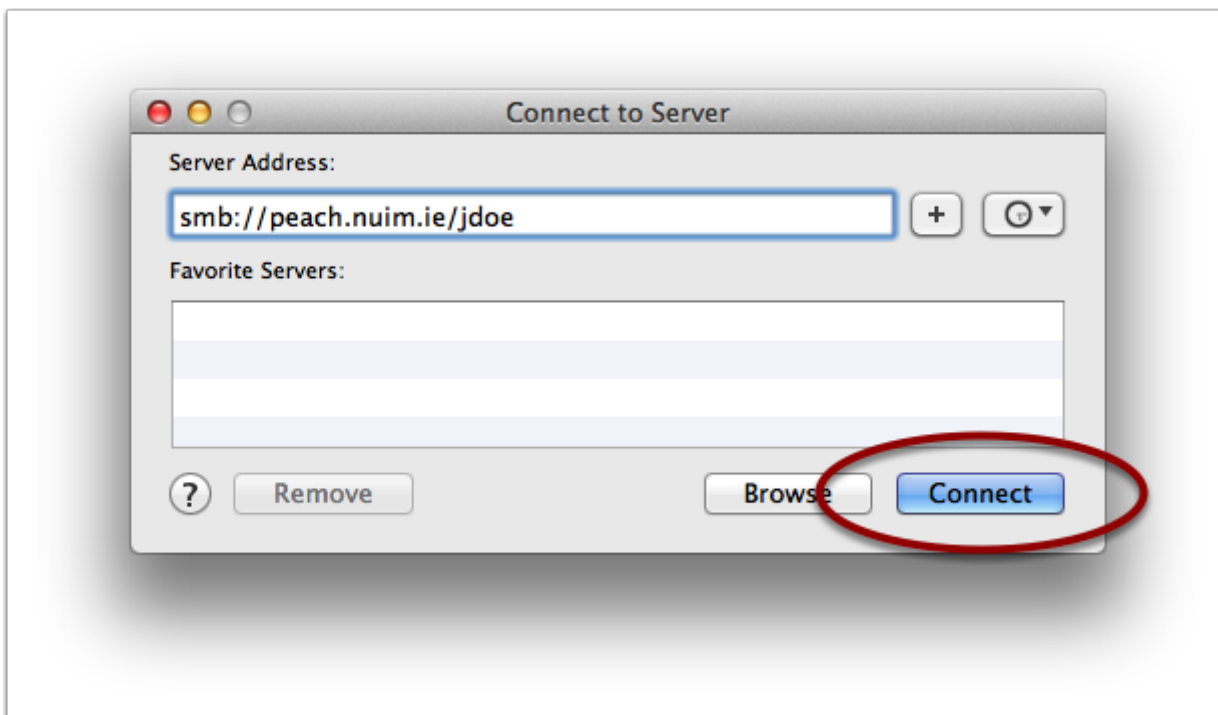
If you would like to map a share other than your X drive, you will find a file called **0_My_Shares.txt** in your X drive that will list the URLs of all the shares you have access to.



If you are connecting to a share you will be accessing often, you can optionally click on the + button next to the URL to add the URL to your Favourite Servers list for easy access.



When you have entered the address, and optionally added the book mark, go ahead and click the **Connect** button.

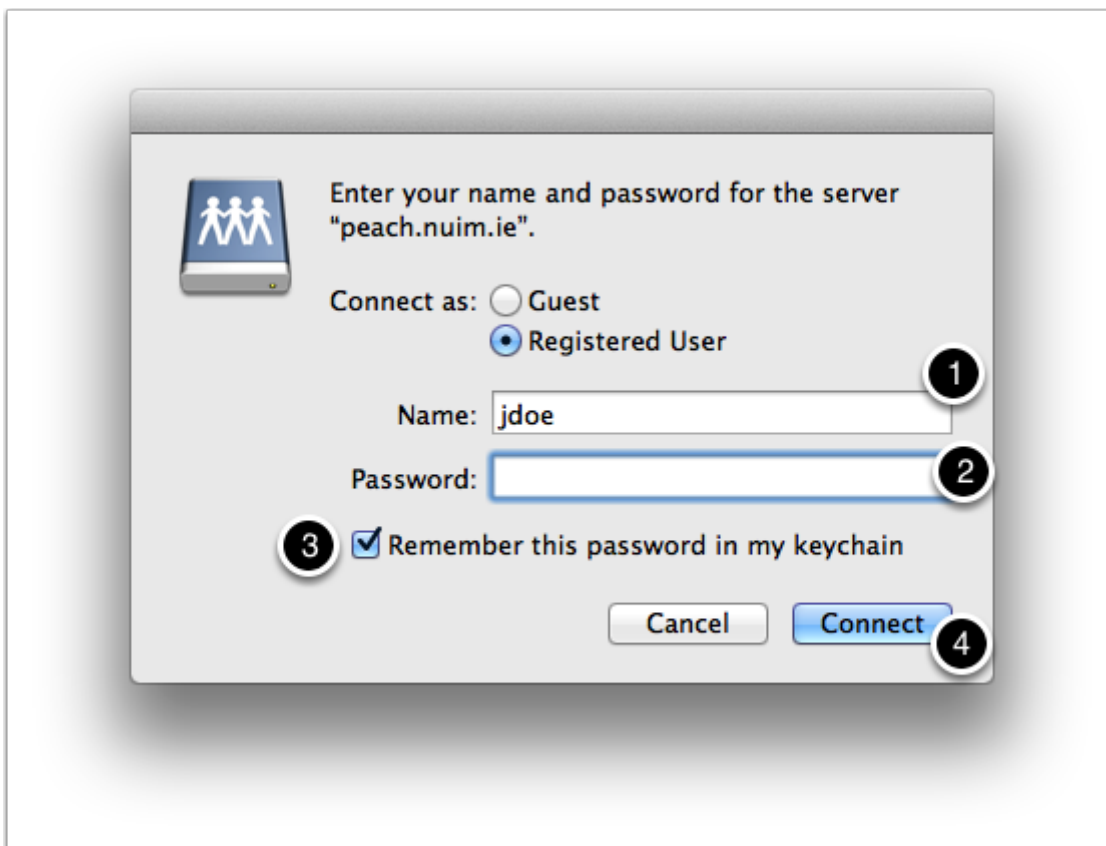


Enter Your NUIM Network Logon

You will be asked for a username and password, enter your standard NUIM username and password (used for logging in to webmail, windows computers, wifi etc.).

If this is a share you will be connecting to often, you can optionally click the checkbox to have OS X securely store the password for you.

1. NUIM Username
2. NUIM Password
3. OPTIONALLY remember details
4. Click Connect

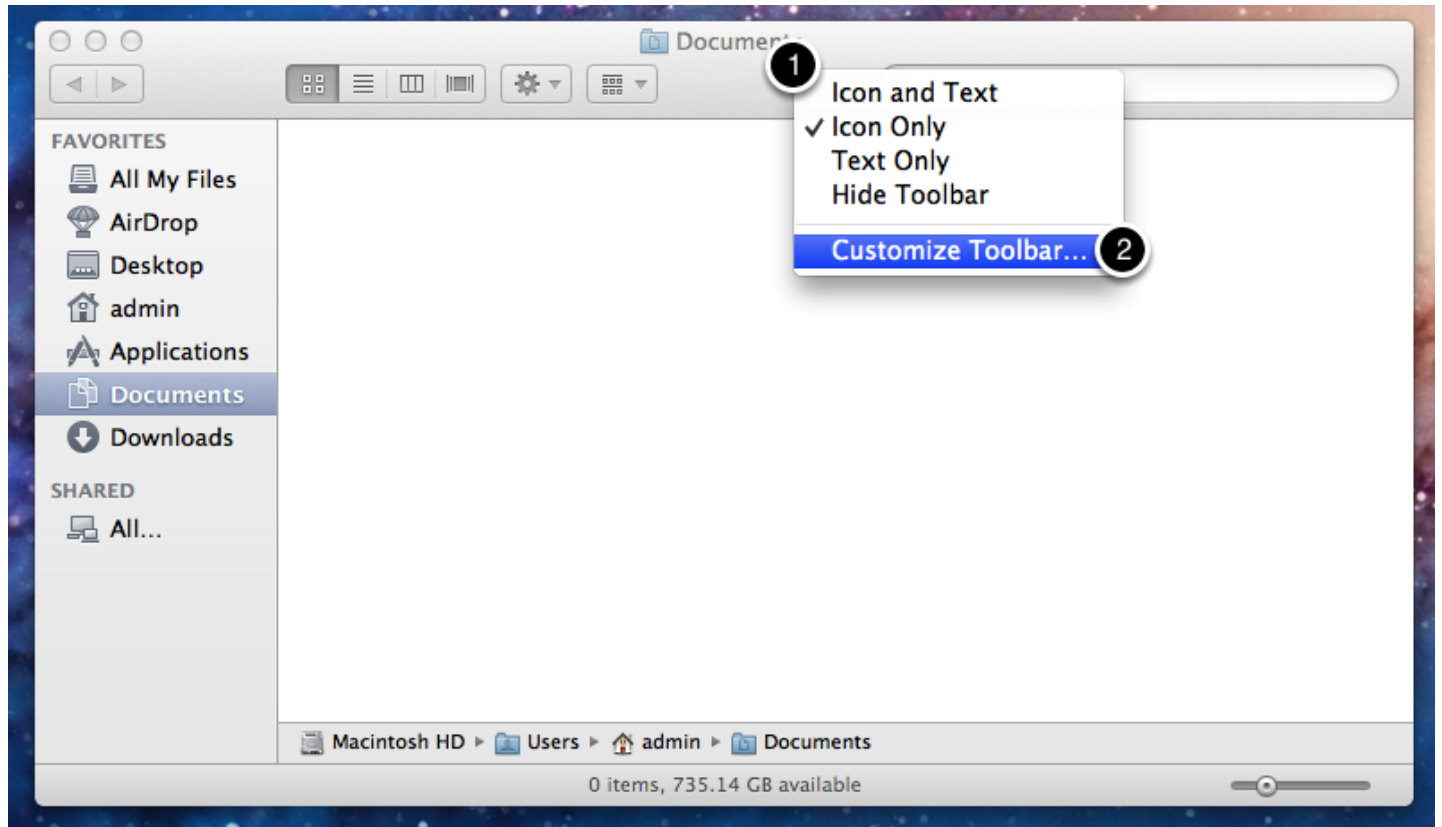


OPTIONAL - Customise the Finder Toolbar

If you will be connecting to shares often, you may find it helpful to add the **Connect to Server...** button to the tool bar at the top of every Finder window.

Open the Finder, and right-click a blank part of the toolbar, then choose **Customise Toolbar...**

1. Right-click
2. Choose Customise



Now drag and drop the Connect icon into the toolbar, you can place it where ever you like. When finished, click **Done**.

