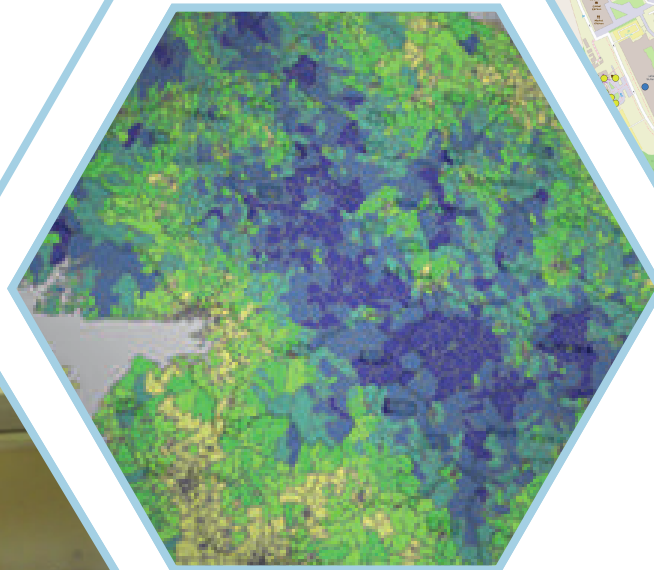
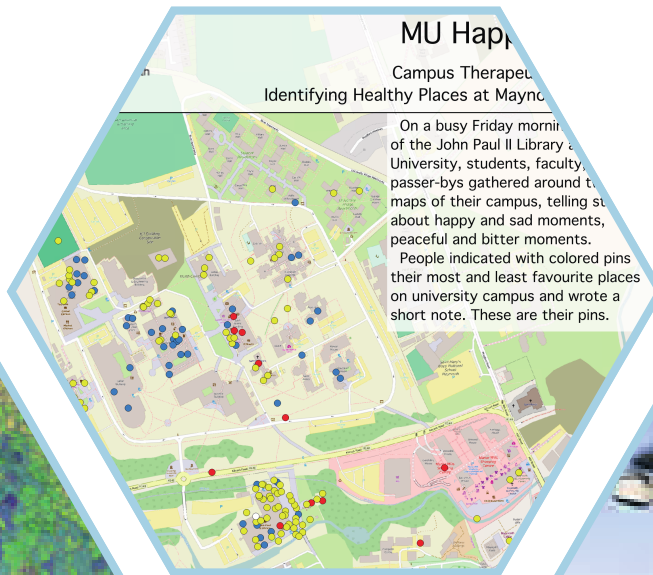


**The Future is
GeoSpatial**



MU Happy
Campus Therapy
Identifying Healthy Places at Maynooth

On a busy Friday morning of the John Paul II Library at Maynooth University, students, faculty, and passer-bys gathered around the maps of their campus, telling stories about happy and sad moments, peaceful and bitter moments. People indicated with colored pins their most and least favourite places on university campus and wrote a short note. These are their pins.



**Maynooth
University**
National University
of Ireland Maynooth



**MSc GIS &
Remote Sensing**

**Maynooth University
Department of Geography**



What you need to know

The MSc in GIS and Remote Sensing at Maynooth University is Ireland's longest running and most successful postgraduate course on the subject. Students learn about; geographical information systems, remote sensing and working with geospatial data. You will gain a strong applied knowledge of software, data and a range of analytical and modelling techniques used with geospatial data along with a work placement. The course is taught by leading academics in the field both nationally and internationally with cutting edge research integrated into the taught component.

Key Facts

1 year full time (September to July)
90 ECTS (60 taught/30 thesis portfolio)

Core Modules

- Introductory GIS
- Theoretical Remote Sensing
- GIS in Practice
- Applied Remote Sensing and Image Processing
- Work Placement
- Thesis Portfolio
- Options in Programming, Spatial Databases and Spatial-Temporal Analysis using R.

What sets us apart?

Interdisciplinary and Transferrable Skills: GIS and Remote Sensing are in-demand skillsets in many sectors and spatial data is a major growth industry. Students find work in varied & exciting environments.

Forefront of Technology: Work with data captured by state-of-the-art survey platforms such as satellites and drones and explore ways of analysing this data.

Employability: The student work placements combine theory with practical examples and provide a clear path into employment.

Accredited: The MSc in GIS and Remote Sensing at Maynooth is the first GIS/RS University module to be accredited by the Society of Chartered Surveyors Ireland (SCSI) and Royal Institution of Chartered Surveyors (RICS). Industry looks for this in a graduate as it is an extra 'check' in terms of quality.

Unique Geospatial Skillset: Students at Maynooth learn from world-renowned experts in their fields - including those at the National Centre for Geocomputation (NCG) and the National Institute for Regional and Spatial Analysis (NIRSA).

What our graduates say

"As a mature student this MSc. allowed me to progress along my chosen career path and develop a unique, niche skill set. The research, analysis and report-writing skills, alongside the core elements of this course, gave me the skills, confidence and network-base to build a career. The course staff were highly supportive, providing excellent advice, direction and encouragement throughout." **Pat Reid**
MSc. Graduate



"The range of modules on the course allowed me to develop skills in spatial analysis, GIS technology and research. Another great aspect of the course was the work experience component. I am now employed with Maynooth University working on projects to assist National and Local Government policies. The course provided a platform to learn and develop skills across employment sectors and with work experience under your belt you can hit the ground running." **Katie Goodwin** MSc. Graduate

Apply Now

You can apply online through PAC
<http://www.pac.ie/maynoothuniversity>

Course code: MHN58

Closing Date: 30th June

Limited places so apply early

Costs/Fees 2019/20

EU Students Full Time: €6,350

Non-EU Students Full Time: €14,000

Entry Requirements

Degree with minimum second class honours, grade one (2.1). We welcome applications from a wide range of subject areas.

Contact and Further Information

Course Director: Dr. Ronan Foley

Email: geography.department@mu.ie

Phone: +353 170 8 3610

Website: <https://www.maynoothuniversity.ie/study-maynooth/postgraduate-studies/courses/msc-geographic-information-systems-remote-sensing>



Maynooth University
National University of Ireland Maynooth