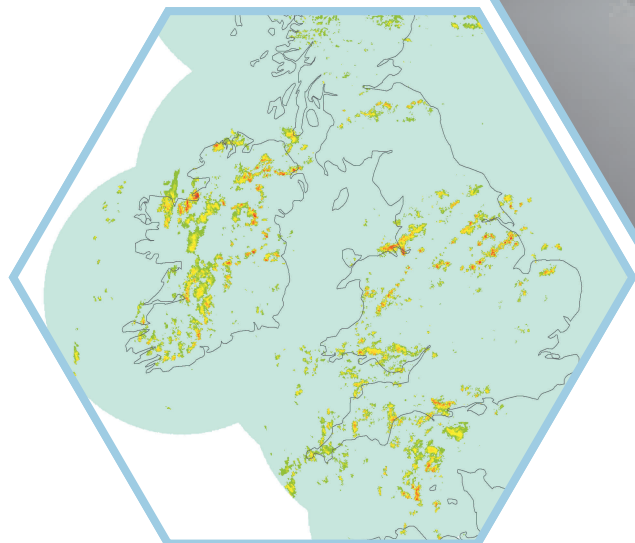
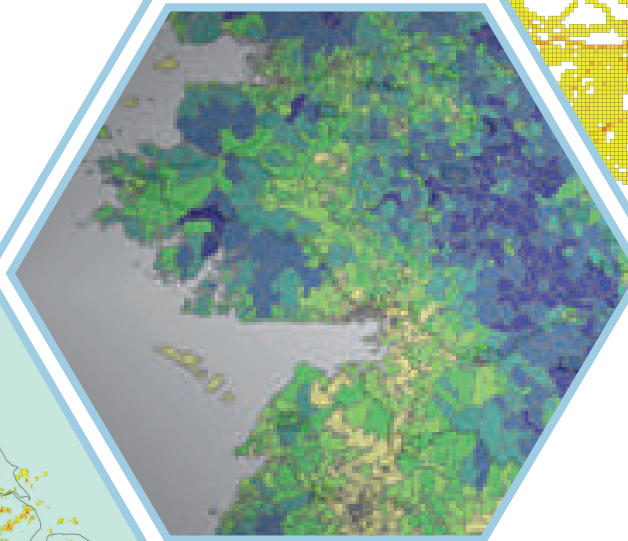


**Password:
My future**



MLitt and PhD Research Degrees



**Maynooth
University**
National University
of Ireland Maynooth

**Maynooth University
Department of Geography**

What you need to know

Student-Centred Research Programme

As part of the postgraduate research experience at Maynooth University Department of Geography, you will design a flexible, inquiry based programme of learning tailored to suit your specific research stage and career needs. This includes access to essential training in research methodologies, data analytics, and advanced discipline-specific and interdisciplinary modules delivered by leading academics. By the end of the programme, you will have developed the critical skills to enable you to advance your career to the next level or wherever you choose to take it.

Key Facts

PhD - 4 years Full-time (6 years Part-time)

MLitt - 2 years Full-time (3 years Part-time)



What sets us apart?

Our Graduates: Since 2000, we have graduated over 60 PhD and numerous MLitt researchers from the department. Many of our graduates go on to careers in academia, industry, regional and local government or national and international policy formulation. One of our recent graduates, working in advanced spatial technologies, was named as one of the top 50 people to watch in 2017 by the Irish Times.

A vibrant community: As a postgraduate researcher, you will play an essential role in the life of the department. Whether that is mentoring or tutoring the next generation of geographers, promoting your research at national and international events or participating on expert bodies - you will be joining a vibrant community of researchers.

Our Staff: The Department of Geography is recognised internationally as a leading national centre of excellence in geography and related interdisciplinary research. Members of staff are dedicated to research-led and inquiry based approaches to learning. As leading thinkers in their field, they contribute to both national and international expert advisory panels and organisations and play a central role in informing new policy developments, both in Ireland and abroad.

Student Focused: Undertaking a research degree in the Department of Geography puts you in the driving seat of your career. Working with our leading academics, you will design a flexible programme of learning, tailored to suit your specific research and career needs.

Apply Now

To apply, first make contact with a member of staff who can discuss your specific research needs. For information, see

<http://www.maynoothuniversity.ie/geography/our-people>

Course code:

Phd MHNO2 (4 years Full-time)
 MHNO3 (6 years Part-time)

MLitt MHNO4 (2 years Full-time)
 MHNO5 (3 years Part-time)

Costs/Fees 2019/20

EU Students: €6,350 Full-time/€4,320 Part-time

Non-EU Students Full Time: €14,000

(*includes student levy)

Entry Requirements

Normally, PhD applicants should hold a relevant Masters degree

What our graduates say

"The world-class expertise of the department provided invaluable insights into my studies. I gained transferable skills in project management, teaching and learning methods and advanced computer competency, all of which are demanded by modern research industries. Receiving support to publish and present my findings to an international audience added that extra dimension to my program and gave me a significant edge in finding employment" *Dr. Paul Alexander, 2016 Graduate*



"While your individual PhD project can be quite subject-specific the structured PhD programme offered by Maynooth provides students with a full range of professional development and generic skills modules. This allowed me to develop valuable skills and techniques that were transferrable to a non-academic settings/career."

Dr. Stephanie Keogh, 2015 Graduate



Contact and Further Information

Course Director: Dr. Rowan Fealy

Email: Rowan.Fealy@mu.ie

Phone: +353 1 708 4562

Website: <https://www.maynoothuniversity.ie/study-maynooth/postgraduate-studies/courses/phd-geography>



Maynooth University
National University of Ireland Maynooth