

Why are we concerned about our energy usage?

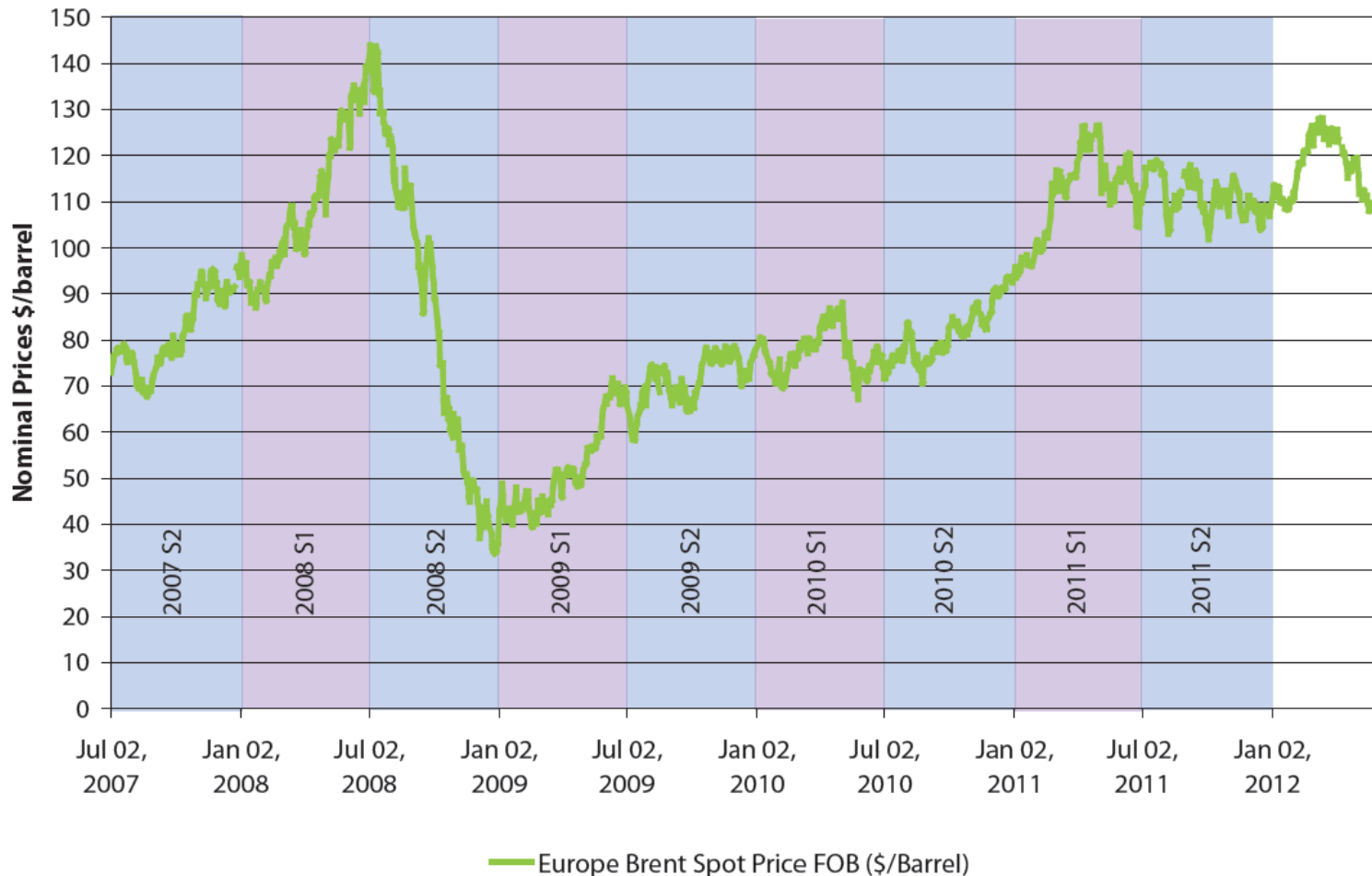
What are we doing about it on campus?

What you can do about it, here and at home!

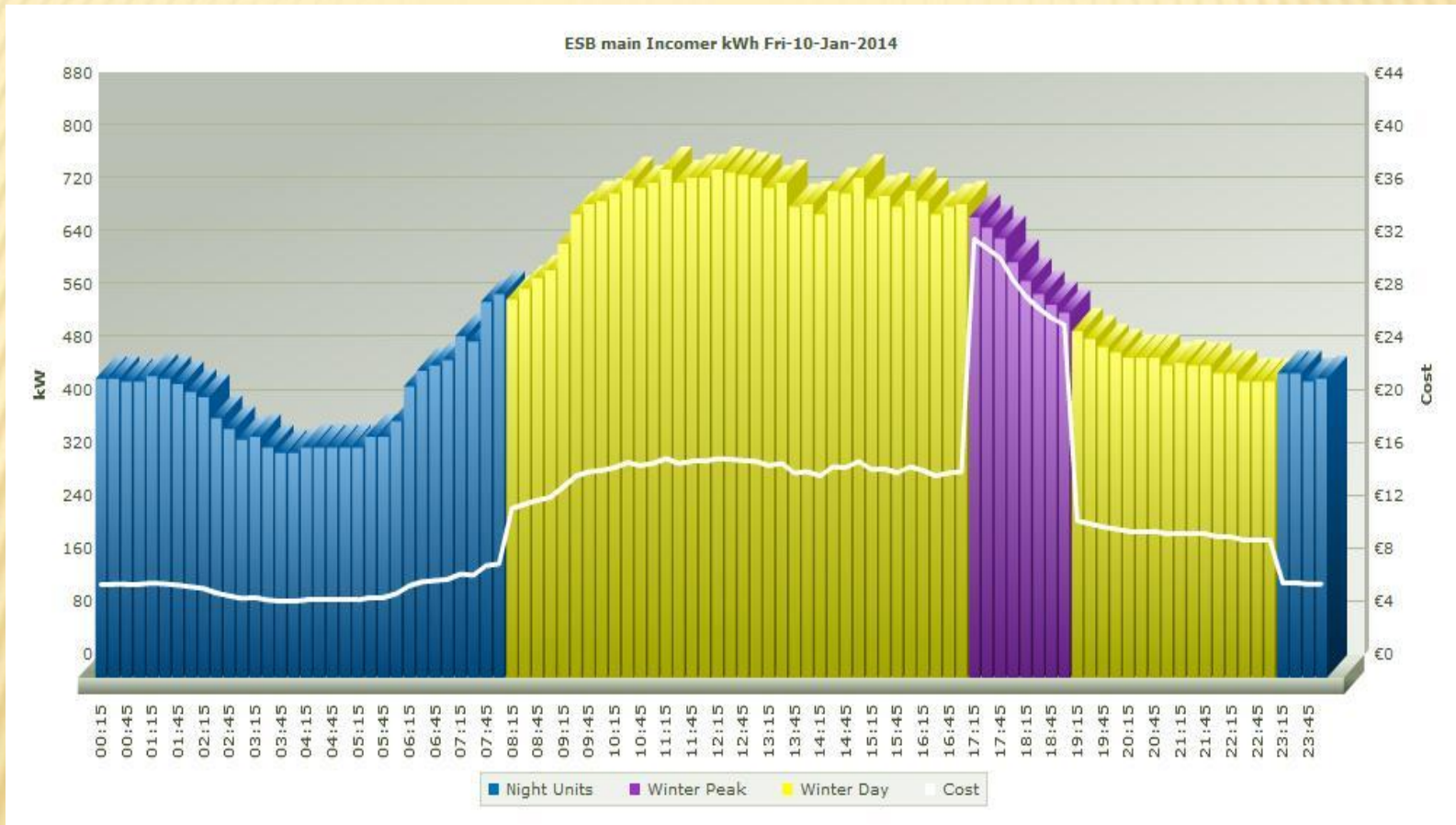
ENERGY

One concern is: Rising Raw Energy Cost!

Figure 1 *Crude Oil Price Trend 2007 – to May 22nd 2012*

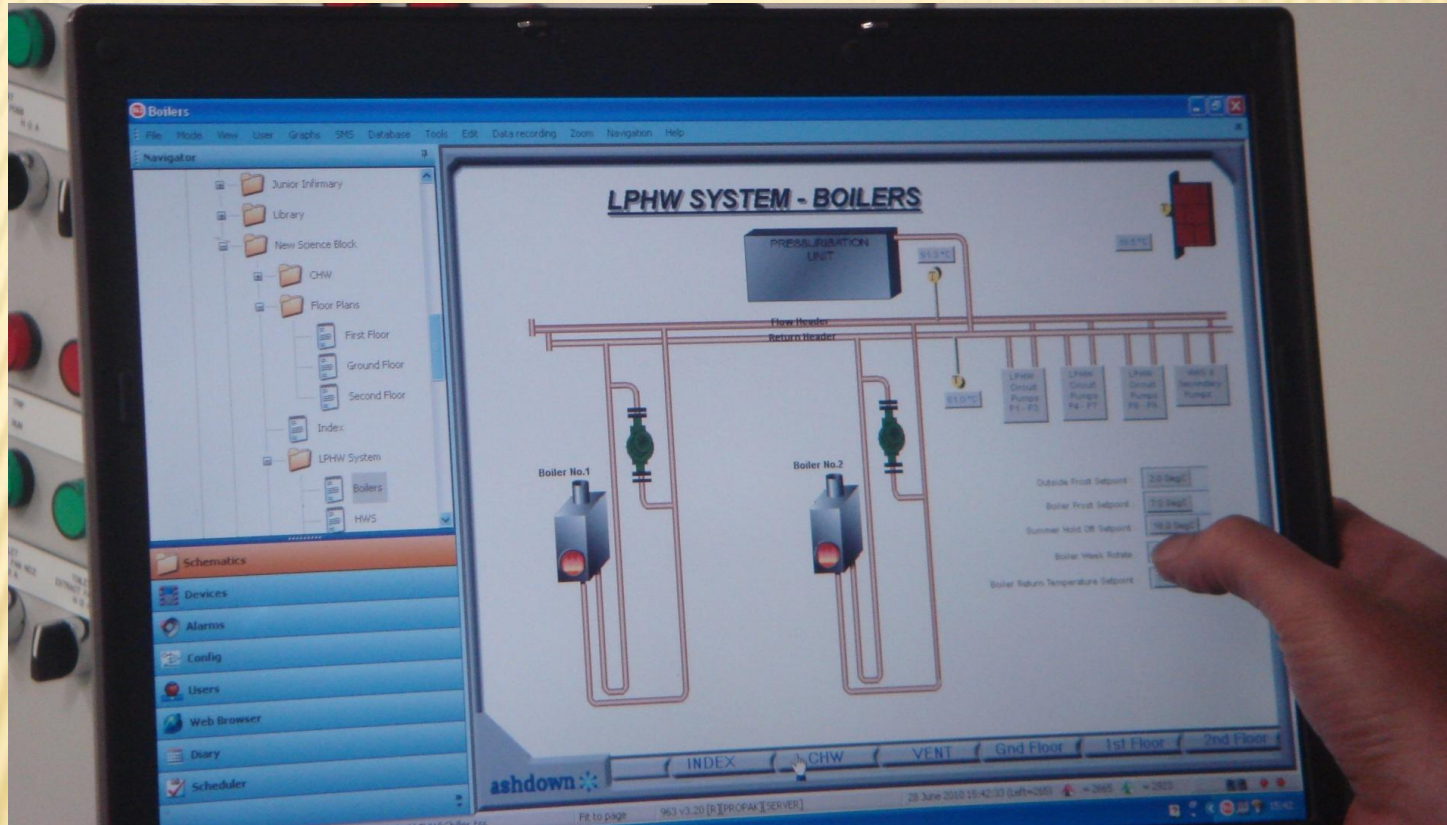


One day's electricity usage on campus is high - and look at the cost!



ESB Daily Demand Graph for Maynooth campus 10 Jan 2014

WHAT ARE WE DOING ABOUT IT ON CAMPUS?



We have installed a building management system, which provides automatic control of energy use on campus

A solar powered natural ventilation system will be installed in the sports hall extension



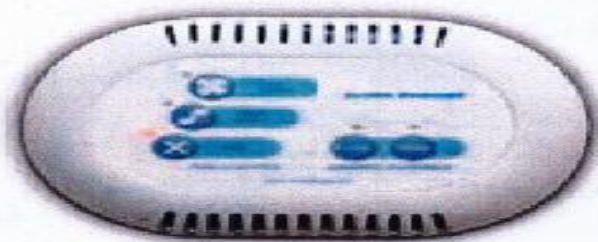
A 40 W polycrystalline solar panel powers the fan.



Normal operation of WINDCATCHER being wind and buoyancy driven

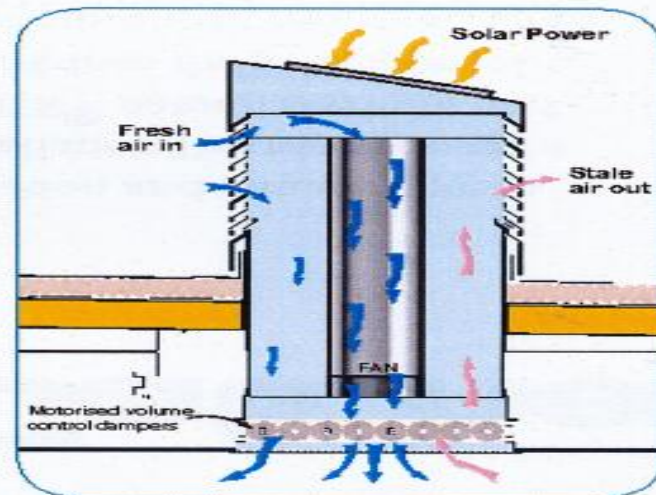


Full power under sunny conditions $\times 2 \frac{1}{2}$ when above 14V output



Control panel

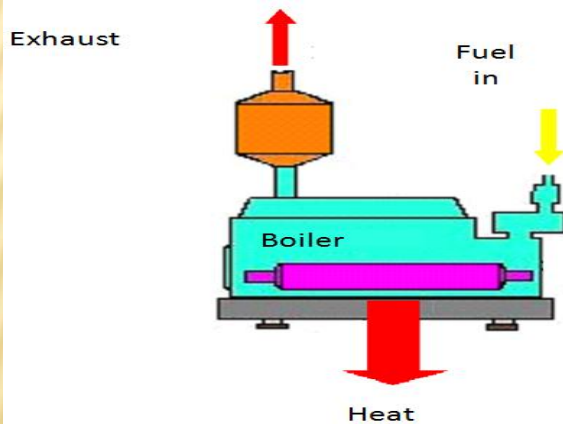
The system is also available as an extract version. The Sola-extract has the fan operating in reverse and is used in areas where cross ventilation is the intended ventilation strategy.



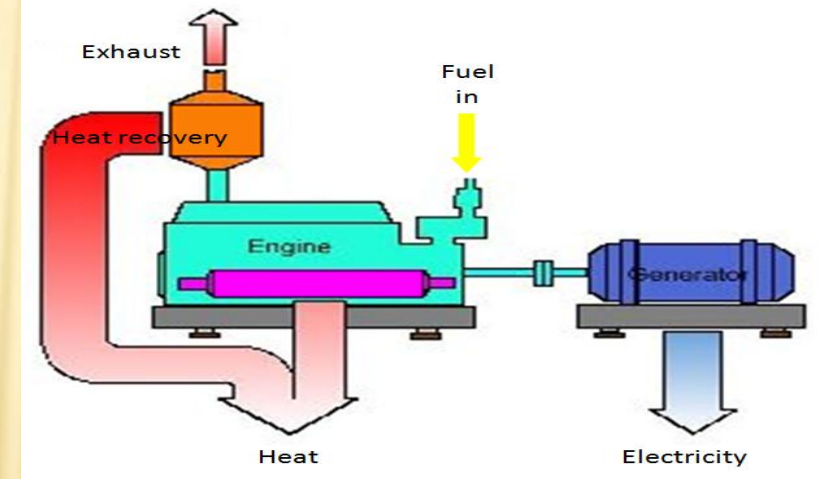
Heat recovery:

We have installed combined heat and power units on North and South Campuses

Standard Heating Boiler



Combined Heat & Power



Lighting in many of our building is controlled by DALI

DALI learns the user behavior patterns and reacts in the energy efficient way

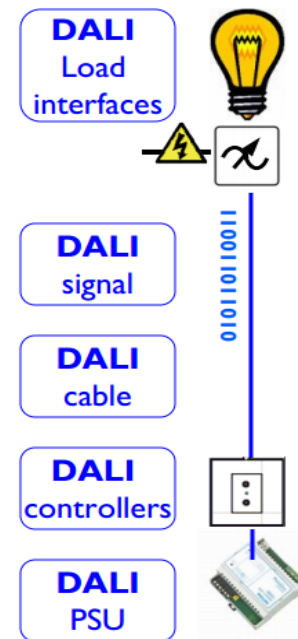
What is DALI

DALI is short for Digital Addressable Lighting Interface.

DALI is a protocol, in which DALI devices communicate with each other.

In other words

DALI is the language in which DALI-devices talk to each other



Solar panels are installed to provide water heating



lontas has many energy efficient features –
making it a truly “wonderful” building!

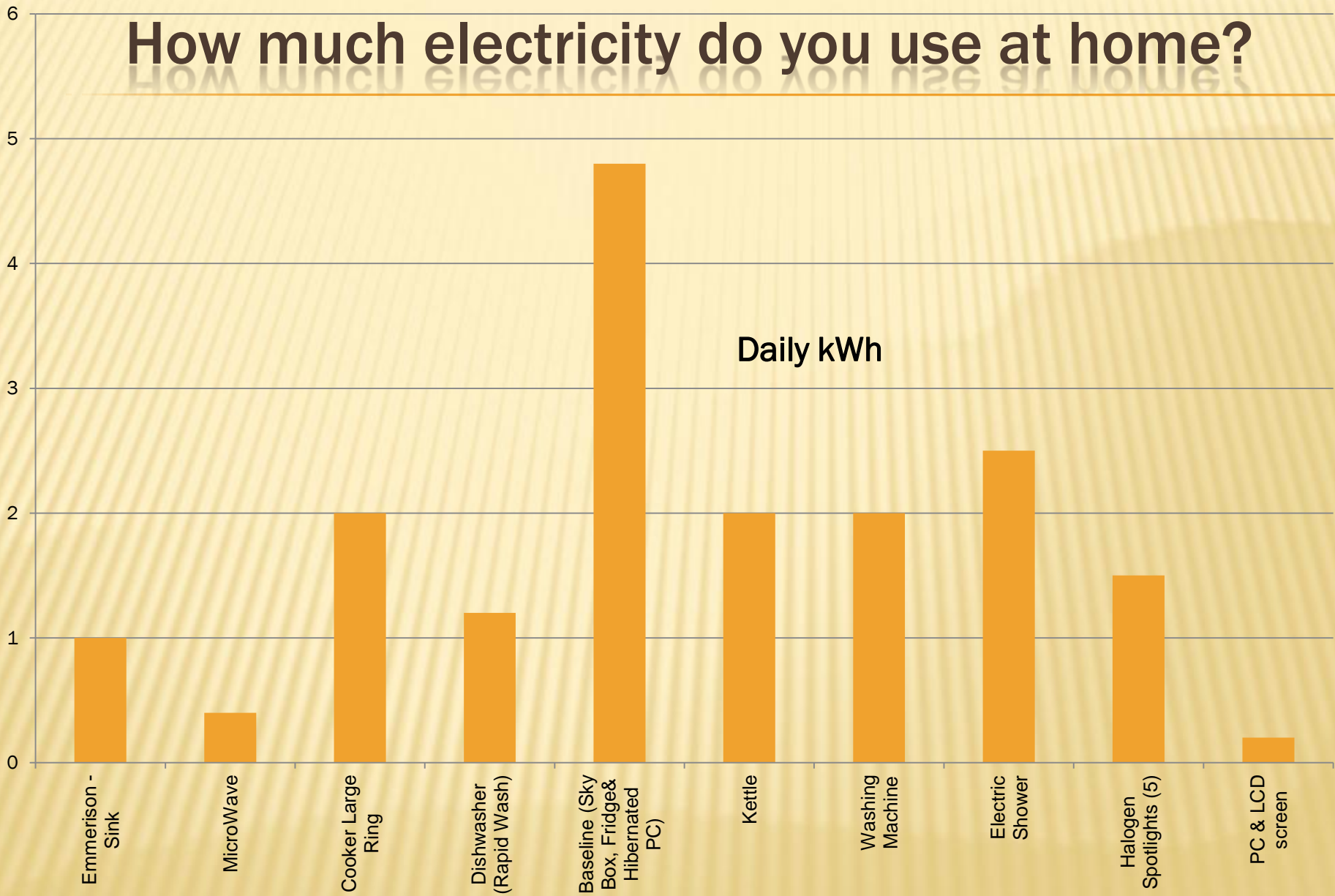


E-Car charging

We have installed a charge point for electric cars



How much electricity do you use at home?



Simple ways for you to save energy - and money!

- ✘ Turn off the lights!
- ✘ Shut off your computers!
- ✘ Unplug charging devices!
- ✘ Use the energy efficient setting – does every wash need to be at 60 degrees?
- ✘ Use your gravity shower!