

NAME: \_\_\_\_\_ CAO NUMBER: \_\_\_\_\_

**SAMPLE ENTRANCE TEST for BMus MH103**

Duration: 1.5 hours

Answer all questions

*Please note that questions (i) and (ii) are not marked as part of the entrance test.*

(i): What is your principal instrument (including voice)? \_\_\_\_\_

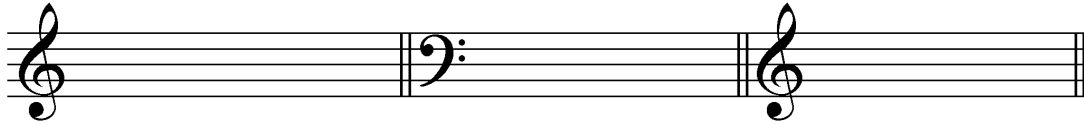
(ii): What grade/standard have you achieved on this instrument and with what examination board (e.g., Royal Irish Academy of Music)? \_\_\_\_\_

1. Write the following key signatures:

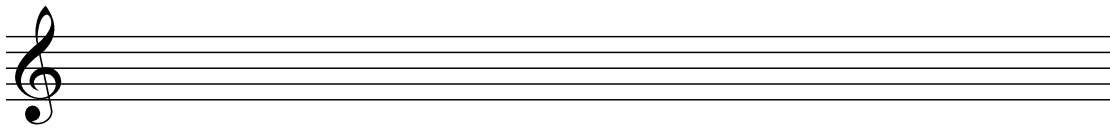
(a) D major

(b) C minor

(c) Bb major



2. Write, **without** using a key signature, one octave of the ascending scale of D harmonic minor, and mark in the semitones:



3. Identify the following cadences (e.g., perfect):



a. \_\_\_\_\_



b. \_\_\_\_\_



c. \_\_\_\_\_

4. Add soprano, alto and tenor parts to this bassline to form the chords indicated:

I      V<sub>b</sub>      VI      I<sub>b</sub>      IV      V      I

5. Complete this melody with another four bars, ending on the tonic:

6. Complete this piece by inserting suitable bass notes and chord indications in the boxes. For the chord indications, use either Roman numerals (e.g., IV) or names (e.g., A), as in the first example.

D                                         

or

I

5



(i) Name a work/song/album by each:

(a) \_\_\_\_\_

(b) \_\_\_\_\_

(c) \_\_\_\_\_

(ii) Identify the style, period or genre associated with each (e.g., Baroque, punk, 1980s, etc.):

(a) \_\_\_\_\_

(b) \_\_\_\_\_

(c) \_\_\_\_\_

(iii) Give two characteristics of each style, period or genre:

(a) \_\_\_\_\_

\_\_\_\_\_

(b) \_\_\_\_\_

\_\_\_\_\_

(c) \_\_\_\_\_

\_\_\_\_\_

8. You will hear three short excerpts of music. **Choose one excerpt** and describe it under **three** of the following headings:

- melody
- harmony
- rhythm
- texture
- notable stylistic features or techniques
- historical period or genre

Each excerpt will be played twice.

(a) Excerpt 1:

---

---

---

---

---

---

---

---

(b) Excerpt 2:

---

---

---

---

---

---

---

---

(c) Excerpt 3:

---

---

---

---

---

---

---

---