



Ollscoil
Mhá Nuad
Ollscoil na hÉireann
Má Nuad

WELCOME HANDBOOK

Lámhleabhar na Fáilte



MY MAYNOOTH

Welcome to Maynooth University!

It takes a huge amount of work and effort to get this far and so many congratulations on receiving your offer to study with us.

Coming to university is an exciting time, but it can also be a bit nerve-wracking and you've probably got a load of questions running through your mind now that you are coming here. There is a lot for you to think about, like your studies, settling in, making new friends, and maybe even moving away from home for the first time. But don't worry, because every new student feels exactly the same way and we here at Maynooth University completely understand this. In fact, we have a whole team ready to help you settle in and get going, and then continue to support you in your personal, academic and professional development. We want to see you succeed – and will do all we can to help!



WELCOME

The Office for Students and Learning was set up to ensure that our students have a great experience while studying with us. We have teams in Student Services, Student Skills and Success, Critical Skills, the Centre for Teaching and Learning and in our Sports offerings. We work closely with our Maynooth Students' Union, Clubs and Societies, International Office and our Academic Departments and Faculties to give you a fulfilling time here with us.

We know that you have busy lives and may be juggling a lot of different things. We strive to meet you where you are, and have a wide range of exciting, rewarding and fun activities for you to get involved in on your own terms.

Over the next few pages you'll be able to read more about what is on offer at Maynooth University and how we can help you succeed.

We look forward to seeing you soon.

Prof. Tim Thompson

Fáilte go hOllscoil Mhá Nuad!

Tá an-chuid oibre agus iarrachta ag teastáil chun an áit seo a bhaint amach agus gabhaimid comhghairdeas ó chroí libh as tairiscint a fháil chun staidéar a dhéanamh linn anseo.

Baineann sceitimíní áthais leis an tréimhse seo i bhur saolta agus sibh ag dul chun na hOllscoile den chéad uair, ach is údar imní é chomh maith ag amantaí agus is dócha go bhfuil fuilleach ceisteanna agaibh anois agus sibh ag teacht anseo go cinnte. Tá roinnt mhaith le bheith ag smaoineamh air, bhur gcúrsaí staidéir, ag socrú isteach agus ag déanamh cairde nua san áireamh, agus ag bogadh ón mbaile den chéad uair chomh maith b'fhéidir. Ach níor cheart bheith buartha, mar mothaíonn gach mac léinn nua díreach mar an gcéanna agus tuigimid anseo in Ollscoil Mhá Nuad go huile is go hiomlán. Mar a tharlaíonn sé, tá foireann iomlán againn réidh chun cabhrú libh socrú isteach agus tús a chur le bhur n-aistear agus chun tacú libh le bhur bhforbairt phearsanta, acadúil agus ghairmiúil Táimid ag iarraidh go n-éireoidh go geal libh – agus cabhróimid cibé bealach gur féidir linn!



Bunaíodh Oifig na Mac Léinn agus na Foghlama le cinntiú go mbeadh eispéireas thar na bearta ag ár mic léinn agus iad i mbun staidéir linn anseo. Tá foirneacha againn i Seirbhísí na Mac Léinn, Scileanna agus Rath na Mac Léinn, Scileanna Criticiúla, Lárionad an Teagaisc agus na Foghlama agus inár dtairiscintí Spóirt. Bímid ag obair go dlúth le hAontas na Mac Léinn, Clubanna agus Cumainn, an Oifig Idirnáisiúnta agus ár Ranna agus Dámha acadúla chun go mbeadh fiúntas le bhur gcuid ama linn anseo.

Tá a fhios againn go rí-mhaith go bhfuil saolta gnóthacha agaibh agus roinnt mhaith ar bun agaibh ag an am céanna. Déanaimid ár ndícheall chun freastal oraibh agus chun réimse leathan de ghníomhaíochtaí corraitheacha, tairbheacha agus pléisiúrtha a chur ar fáil daoibh.

Ar na leathanaigh seo a leanas, beidh tú in ann tuilleadh a léamh faoin méid atá ar fáil in Ollscoil Mhá Nuad agus faoin mbealach gur féidir linn cabhrú go mbeadh rath oraibh anseo.

Táimid ag súil le sibh a fheiscint go luath,

Prof. Tim Thompson

CONTENTS

Contents	4
What Next	5
Welcome Week Checklist	6
Subject Information Days.....	7
Registration	8
Welcome Week Details	9
My Maynooth on Moodle	10
Accommodation and Studentpad	11
IT Systems	12
Student Budgeting	14
Commuting and Transport	15
Students and Learning.....	16
Clubs and Societies	19
Maynooth Students' Union	20
Maynooth Access Programme	22
Library	24
Glossary	25
Directory	27
Campus Map	28
Notes.....	30
Parents Information.....	31

WHAT NEXT?

REGISTRATION

Once you receive your registration email, just follow the steps as outlined in your email, This will guide you through the registration process

BUDGETING

You can organise a free, confidential, one to one meeting with the Student Budgeting Advisor to talk over your financial situation and try to ensure you are accessing all options for a positive college experience

EMAIL & MOODLE

Log into student web and activate your email. Log into My Maynooth on Moodle and check out our online orientation, the perfect companion to everything happening during Welcome Week on campus

COMMUTE OR STAY?

Not all students need accommodation some may only need it for a few days a week, what ever your needs, work out if you are commuting or staying as early as possible

SUBJECT INFORMATION DAYS

If you have to make a subject choice as part of your degree programme, make sure to attend the Subject information & support days on September 9th & 10th

WELCOME WEEK

Attend Orientation and Registration Verification as per your first week schedule included in your email. Attendance is compulsory. You will attend for one full day only that week



Don't forget to complete your Active Consent Workshop before Welcome Week

WELCOME WEEK CHECKLIST

Make the most of your first days on campus with this handy guide:

- ☐ **Attend your scheduled Orientation events**
Get to know the university, meet new people, and settle in smoothly.
- ☐ **Meet the Green Team (Orientation Leaders)**
They're here to help you feel at home and answer any questions.
- ☐ **Take a Campus Tour**
Familiarise yourself with key locations and hidden gems.
- ☐ **Complete Registration Verification & Collect Your Student ID**
This is essential for accessing campus services.
- ☐ **Find your School or Department Office**
Know where to go for academic support and guidance.
- ☐ **Locate your Lecture Theatres and Classrooms**
Avoid first-day confusion by checking them out in advance.
- ☐ **Print Your Academic Timetable**
Stay organised and on top of your schedule.
- ☐ **Explore Student Support Services**
Learn about wellbeing, academic, and financial supports available to you.
- ☐ **Visit the Students' Union (MSU)**
Discover how they represent and support you throughout your studies.
- ☐ **Check Out Campus Shops, Cafés, and Dining Areas**
Find your go-to spots for coffee, snacks, and meals.
- ☐ **Connect Your Devices to Student Wi-Fi**
Stay connected across campus.
- ☐ **Sign Up for a Library Workshop**
Boost your research and study skills early on.
- ☐ **Apply for a Parking Permit**
(*Student ID required*)
If you're driving to campus, this is a must.
- ☐ **Apply for a Student LEAP Card**
Save on public transport with this student travel card.
- ☐ **Check Bus and Train Timetables & Routes**
Plan your commute and locate your nearest campus bus stop

SUBJECT INFORMATION DAYS

September 9–10, 2025

Choose your Subjects

Maynooth offers a wide variety of choices depending on your degree, and in order to help you make these choices, we will have **Subject information talks on Tuesday & Wednesday, September 9–10, 2025.**

At these sessions, you will get to meet some of the academic staff in the various subject areas that you are interested in studying, as well as getting an insight into what studying that subject will look like in your time here. It's really important that you attend these talks if you have choice in your degree, as they will help you make your decision as to what combination of subjects you choose.

For more information on the Subject Information & Support Days as well as advice around your subject choices please visit:



**CHOOSE YOUR
SUBJECTS**

Critical Skills

In first year you also have the option of taking a subject called Critical Skills. This is an intensive course in the skills we expect a Maynooth graduate to have. This course will develop your ability to analyse ideas from different perspectives, develop your position, and present your ideas clearly and convincingly. This is a first year course only and is available in every timetable group. It is taught in small groups and you can expect to do regular assignments in writing and in verbal presentation, to develop your skills in these important areas. You can chat to the staff from Critical Skills on the Subject Information Days for more information.



REGISTRATION

Registering as a Maynooth Student

Students who received an offer from the CAO in Round 0, Round A and Round 1 will be sent an email by the Registration Team (registration@mu.ie) on Monday, 8th September inviting them to register for their respective course. This email will be sent to the email address that was used for the CAO application process.

(Please note: Students who receive an offer from the CAO in Rounds, 2, 3, 4 and 5 will receive a registration email a couple of days after the closing date for each round).



**STUDENT
REGISTRATION**

Once you receive your registration email, just follow the steps as outlined in the email which will guide you through the registration process.



WELCOME WEEK DETAILS

Welcome Week is when we get to officially welcome our new students to the campus and is an opportunity for all new students starting in Maynooth University to:

- **Complete your registration verification**
- **Familiarise yourself with the University and its various departments**
- **Meet new friends**
- **Learn about the various supports services available to you**
- **Explore the student life opportunities open to our students, including Clubs and Societies, Students' Union, Volunteering, etc**

You will be assigned to a group based on your course and the details will be in the email you receive from the Student Records and Registration Office.

Attendance is compulsory for all new First Year students.

You will attend for one full day only in that week with your assigned group and you will be met by our Green Team of Orientation Leaders who will be your guides not only for Welcome Week activities but also throughout your first year. Our Green Team are current students and you can chat to them about their university experience and ask them any questions you may have about starting in Maynooth.



**WELCOME WEEK
DETAILS**



MY MAYNOOTH ON MOODLE – YOUR ONLINE ORIENTATION

Starting university is a big deal — and your first few weeks here are all about getting settled in, meeting new people, and discovering what *you* want to get out of your time at Maynooth, both academically and personally.

To help you hit the ground running, we've put together an **Online Orientation** course called '**My Maynooth on Moodle**' — your go-to guide to university life! It's a perfect companion to everything happening during **Welcome Week** on campus.

Inside the course, you'll find:

- A breakdown of what your first weeks will look like
- What to expect in and out of the classroom
- Where to find support, services, and resources when you need them
- Real talk from current students sharing their best tips, must-knows, and insider advice

Once you've registered and gotten your MU student email, you can access '**My Maynooth**' any time - binge it all in one go or dip in and out at your own pace. Your journey, your way.

New content drops every month, so you'll always have the info you need, exactly when you need it.

Students will be notified by email as soon as My Maynooth online Orientation is open on Moodle.



ACCOMMODATION AND STUDENTPAD

Maynooth Campus – Short Stay Accommodation

Staying at Maynooth Campus on the south campus in our standard or ensuite bedrooms offers incoming first-year students a convenient and flexible way to experience university life on a nightly basis. Whether you're attending orientation, early classes or simply want to get a feel for the campus environment, nightly stays provide a comfortable and affordable option.

Our standard college and en-suite bedrooms are located on the south campus within walking distance of lecture halls, the library, Pugin Hall and the town of Maynooth.

Choosing to stay at Maynooth Campus on a nightly basis is a great way to ease into university life. With competitive prices, a range of booking options and flexible terms, staying on campus is an ideal and convenient choice for first-year students.



MAYNOOTH
CAMPUS

We offer special student rates Check QR Code for more info.

Maynooth Studentpad is our online platform for listing off-campus accommodation in the areas local to the university. It is a self-service for both students and homeowners, and the university offers this platform to connect. It is a closed system, so can only be accessed by registered students or incoming students with a confirmed offer of an academic place at Maynooth.

MaynoothStudentpad Password

You will have received a temporary password to access the accommodation listings by email. Please use this password and remember it is case sensitive.



STUDENT
PAD

IT SYSTEMS

Student Web at Maynooth University is your central online portal for essential administrative tasks as a registered student.

Here's how it works:

- **Registration & Module Management**

Through Student Web you complete your annual registration, choose or amend your modules/subjects, update your contact details, and manage fees and documentation.

- **Exam Results & Transcript Requests**

Exam results are released via Student Web, and you can also request transcripts or other official records there.

- **Integration with Other Services**

Once you're fully registered, your student data feeds into other portals like Moodle (for module materials) and MU Connect (for careers, placements, academic writing support)

Moodle

Moodle is Maynooth University's Virtual Learning Environment. It gives you access to course resources, activities, and assessments.

Moodle is an online environment where students and staff interact with each other, and with learning resources for programmes and modules delivered at Maynooth. You will have access to a Moodle page for every module you are registered for.

Students can access Moodle 24/7 and from anywhere you have Internet access: on your PC, laptop, tablet or mobile phone. For more information and to access Moodle scan the QR code.



MOODLE

Timetable Viewer

Finding your timetable: The academic timetable is available on the Timetable Viewer. The provisional timetable for 2025/26 will be available in late August.

Check out our timetable guide for first years and continuing Students here ➡



TIMETABLE

IT Services

IT Services provides a wide range of general and specialist IT services to all Maynooth University students. Details of the services provided are available on their website, and support and assistance in using those services are available thorough their **“ASK”** button on the website and their service desk in the Eolas Building.

Follow this QR code for all you need to know on the IT services available to you, during your studies with Maynooth University.



**INFORMATION
FOR STUDENTS**

- Your Account - username, password and an official University email
- Access to Office 365, including E-mail, Calendar, OneDrive for personal storage, Teams for group work and collaboration of any sort, and much, much more.
- Printing facilities across both the North and South campus
- Access to the eduroam Wireless Service
- A direct link to the HEAnet store where you can access various discounts on a range of IT products and services
- Public Access Computer Rooms (PACRs)
- IT Services Student Support Team are online

STUDENT BUDGETING

Student Budgeting

The Student Budgeting Advice Service offers support and advice with managing your money for University.

You can organise a free, confidential, one to one meeting with the Student Budgeting Advisor to talk over your financial situation and try to ensure you are accessing all options for a positive college experience. Being in college can be expensive, so help with planning and accessing financial support is vital.

The Student Budgeting Advisor provides advice and support with SUSI, budgeting, funding applications, social welfare queries and all financial questions. Workshops are also organised throughout the year to provide information on financial topics.

Students are welcome to come with any financial concerns. There are no stupid or wrong questions about money – just possible regret for not asking sooner!

Email: student.budget@mu.ie

<https://www.maynoothuniversity.ie/student-services/student-budgeting-advice-service>



**STUDENT
BUDGETING**



COMMUTING AND TRANSPORT

Travel to Maynooth

Located in the heart of North Kildare, Maynooth is a vibrant destination with a range of sustainable travel options available for students.

Our campus is well-connected by train services and both public and private bus routes, making it easy to reach us without relying on a car.

Scan here to explore travel options that best suit your needs and help support a greener, more accessible campus environment. ➡



COMMUTING

Commuting by Car

To support a fair and sustainable commuting experience, we kindly encourage campus visitors to travel by car only when necessary—especially when other transport options aren't viable. As parking is limited, we ask the campus community to consider the needs of those who rely solely on driving for their daily commute. If you are parking on campus, you must have a valid campus parking permit and park in the designated parking zones. The Traffic Management and Parking Policy for the academic year 2025/26 comes into operation on Monday, 22nd September.

More information on parking on campus and parking permits, scan here ➡



PARKING



STUDENTS AND LEARNING

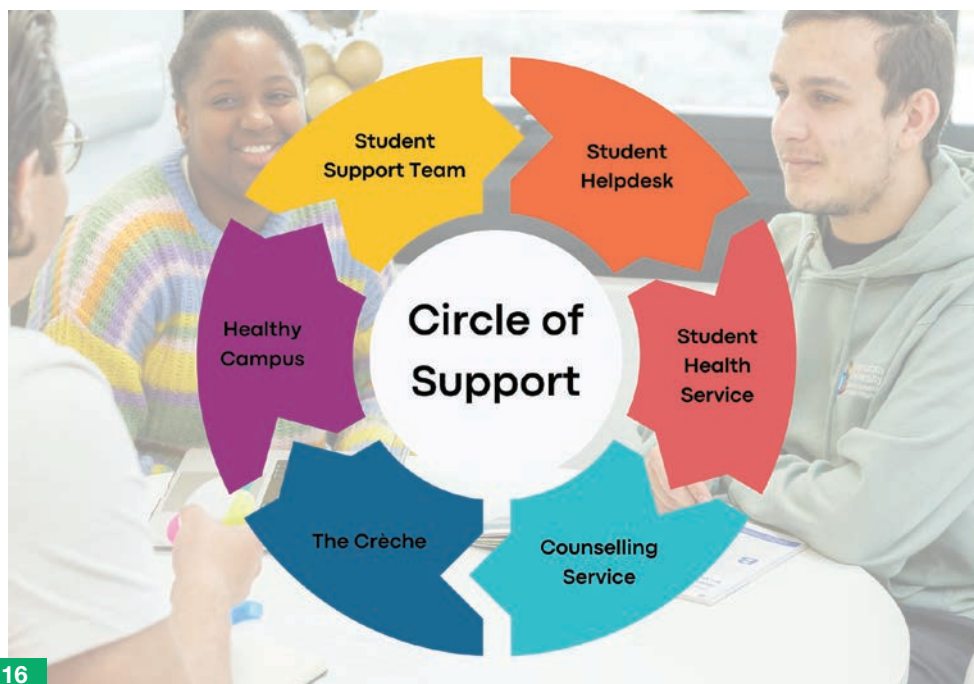
At Maynooth University, we want to enable our students to thrive, not only academically but personally and professionally too.

Starting university is a big step, but you won't be doing it alone. You will meet our Student Success and Engagement team during the My Maynooth Orientation Programme, which has been designed to ensure you feel informed, welcomed, and connected.

Here For You-Every Step of the Way

We recognise that every student's journey is unique. That's why our support services are welcoming, non-judgmental, and centred around you.

No matter what you need, advice, encouragement, or just someone to point you in the right direction — there's a whole Circle of Support ready to help. Our Student Helpdesk is your starting point.



Reaching Your Academic Goals

Beginning a college course can involve adapting to different styles of learning than you're used to. It may also mean feeling unsure about whether the choices you've made are the right ones for you. So, whether you need some support with your course, want tips on academic writing, or need to speak to someone about your subjects, we have the resources to help you get where you need to be.

Academic and Programme Advisory Services

Academic Writing and Study Skills Support

Computer Science Centre

MILO-Maynooth Inclusive Learning Online

IT and Moodle Support

LIST (Library Information Skills Tutorials)

Mathematics Support Centre (MSC)

An Droichead-Ionad Tacafochta na Gaeilge / Irish Language Support Centre



Beginning with the End in Mind

Your time here isn't just about your studies—it's also the launchpad for your future. From day one, start exploring your career interests, building skills, and saying yes to opportunities that will shape your professional journey.



CLUBS AND SOCIETIES

Run by students for students

Clubs and Societies at Maynooth University (MU) are vibrant, student led communities built around shared interests, passions, and activities. They're more than just extracurricular groups they're a key part of university life, offering you a place to connect, explore, and feel at home.

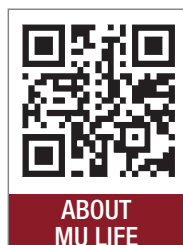


With over 100 Clubs and Societies on offer, there's something for everyone, whether you're into sports, the arts, volunteering, culture, gaming, or something a little different. No matter where you come from or what you're into, there's a space for you to belong.

Getting involved is one of the best ways to meet people, try new things, and make the most of your time at university. Whether you're building on a passion or stepping out of your comfort zone, the friendships and memories you make can last a lifetime.

Many students say their involvement in Clubs and Societies was one of the highlights of their college experience. It's a chance to grow, lead, and be part of something bigger than yourself.

Ready to dive in? Discover what's waiting for you at www.mulife.ie.



WELCOME TO MSU – YOUR MAYNOOTH STUDENTS' UNION!



Whether you're joining Maynooth University (MU) or St Patrick's Pontifical University (SPPU) you're already part of MSU! That's right, from the moment you register, you've got an entire student-led organisation backing you.

We're here to represent you, support you, and help you get the most out of your university experience from day one to graduation!

WHAT IS MSU?

MSU Senate

The MSU Student Senate is a group of elected students who shape the Union policy and represent voices from every faculty and interest group on campus.

MSU Executive

The MSU Executive is a team of full-time and part-time elected officers who lead the Union's daily work and represent students year-round.

Academic Reps

Academic Reps are students elected in each department to make sure your voice is heard and your education stays on track.

MEET YOUR TEAM!

MSU PRESIDENT



MAEVE FARRELL

UACHTARÁN AMLMN

VP ACADEMIC AFFAIRS



CHARLI MIDDLETON

AN LEAS-UACHTARÁN UM
CHÚRSAI ACADÚLA

VP WELFARE & EQUALITY



THEA LAYBERRY-LING

AN LEAS-UACHTARÁN UM LEAS
AGUS COMHIONANNAS

VP STUDENT LIFE



AMINA TRABOUE

AN LEAS-UACHTARÁN UM
SHAOL NA MAC LÉINN

FIND OUT MORE ABOUT
YOUR OFFICERS →



president@msu.ie
+353 1 708 6436 | +353 87 908 3602
academicaffairs@msu.ie
+353 1 708 4712 / +353 87 278 5204
welfare@msu.ie
+353 1 708 6808 / +353 87 630 6433
studentlife@msu.ie
+353 1 708 6249 / +353 87 957 8923

WHY GET INVOLVED?

EXPLORE YOUR PASSIONS

Your academic studies are why you are here, but life needs more than that! Dive into the world of extracurricular activities where the real magic happens. Engage in thrilling debates, capture epic moments, or even become a superhero of change through activism! The choice is yours, and the possibilities are endless!

DEVELOP KEY SKILLS

Student Organisations are run by students, for students. MSU is a great place to level up your skills, embrace teamwork and discover all that lays undiscovered within you. Unleash your potential, unlock new abilities, and dive headfirst into the world of growth and learning.



COME WORK WITH US

MSU INFO CENTRE

The MSU Info Centre is your one-stop-shop for all your student needs. We offer printing, binding, laminating, lea-card processing and top-ups, Payzone point and merchandise.

We offer a parcel point service where students can send, collect & return parcels. We also have our MSU online store where you can buy both MU and MSU goodies.

Your Front Office manager, Ann Marie, and her team of student staff are here to answer any general campus questions and you can also book an appointment with your MSU Officers at the front desk.

Opening Hours: 8:30-6pm during term time.

ANN MARIE CUDDEN
MSU FRONT OFFICE MANAGER
FRONTDESK@MSU.IE | (01) 708 3669

MSU LONDIS

You will find the SU Shop to your left as you enter the John Hume Building's main entrance. While your MSU Londis isn't located in the MSU Student Centre, it is run by our Shop Manager, Brian, and his team on your behalf. Our aim is to provide great products and service at student-friendly prices. From tea and coffee, snacks and sambos to household essentials you can find it all in Londis.

Opening Hours: 8:30-7pm during term time.

MSU CLUB

The MSU Bar serves food from 8:30 AM to 9 PM and has late entertainment most nights, ensuring it is the main social hub on campus. Before and after lectures people reconvene, chill out and enjoy the entertainment! Prices are student friendly and a warm welcome will always await you from the entire team.

The Venue plays host to our large events during the year such as the Freshers' and Summer Fests. The Venue is used often by Clubs and Societies and sound and lighting technicians are provided by the SU to assist with events.



@maynooth_su



msu.ie



@maynoothsu



MAYNOOTH ACCESS PROGRAMME

At Maynooth, we believe university should be for everyone - no matter your background or life path. MAP (the Maynooth Access Programme) supports students from groups identified in the National Access Plan as being traditionally under-represented in higher education. This includes mature students, school leavers who enter via the Higher Education Access Route, students with disabilities, students who are further education and training award holders, refugees, carers, members of the Roma community, students parenting alone, students in the Care of the State, and members of the Irish Traveller community. If that sounds like you, know this: you belong here, and MAP is here to walk the journey with you.

Whether you're just starting out or already settling in, the MAP Student Advisory Service provides personal, academic and financial supports to help you succeed during your time at Maynooth.



**MAP Student
Advisory Service**

Here's how MAP can support you:

● Academic Support

Need help with study techniques or managing your workload? MAP offers **Study Skills Workshops** integrating the **Milo** online platform, and sessions on integrating technology into your learning will help you build confidence in your academic skills.

● Personal Support

University life can be a big adjustment. You can chat with a **MAP Student Advisor** and attend **Wellness Workshops** to help you navigate any challenges and enhance your wellbeing.

● Financial Support

We know financial worries can impact your studies. That's why MAP connects students with supports like the **Student Assistance Fund**, the **1916 Bursary**, **disability scholarships**, and other funding opportunities.

Every student's journey is unique. At MAP, we're committed to helping you build yours with confidence, independence, and the support you need to succeed.



MAP



LIBRARY

MU Library is here to help you at every stage of your student journey. We have many opportunities and ways for you to engage with us, at the time that works best for you.

A few key facts about our Library:

- The Library was founded in 1795, and now has two Library buildings (John Paul II Library, and the Russell Library).
- We have over 450,000 books and e-books, as well 42,000 online journals so finding information for your studies is easy to do!
- In the Library, we provide individual and group study spaces, a Wellness Area, and a café to rest and recharge, all in a modern, welcoming setting.
- Our Library team can help you with any questions you have about using the library, and support you with your university studies.

We've listed below the most important information for you now, and ways you can get in touch with us when you need help:

- Visit our Library Pop Ups in the Library at the start of semester – we'll have freebies and lots of information about what's coming over the semester
- Take a look at our LiST (Library Student Training) sessions which run all semester and help you with the skills you need for your academic and personal development at university
- Follow us on social media to keep up to date with our events, supports and tips throughout the year



LiST



You can find all the information you need from our website



LIBRARY



GLOSSARY

Orientation:

Welcome to your introduction to Maynooth University designed to help you settle into university. The first thing you need to do is go to <https://my.maynoothuniversity.ie/> where you will find loads more information and resources that will help you get set up and start your course.

Semester:

We divide the academic year into two parts called semesters. The first semester runs from September to January, and the second semester runs from February to May.

Programme:

The programme is the general term we use to describe what you study. Your programme leads to a degree, and the content will depend on the degree you are taking.

Subject:

Many programmes are divided into different subjects. In most degrees you will graduate in either one or two subjects. However, you will often take more subjects in first year.

Module:

Subjects are made up of modules. Each module is a substantial amount of study that is assessed separately. Together, they contribute to an overall subject mark.

Credits:

The amount of work involved in a module is indicated by its credit weight. In first year, most modules are 7.5 credits, and after first year most modules are either 5 or 10 credits. We use the European Credit Transfer System (ECTS), in which a normal year of full time study is 60 credits. In first year you will typically do eight modules, four in the first semester and four in the second semester.

Marks and Standards:

The regulations that guide university assessment are called Marks and Standards. The full Marks and Standards document, plus a guide for students on assessment regulations are available on the University Policies page at: www.maynoothuniversity.ie/universitypolicies/academic-policies-procedures

Module Coordinator

The Module Coordinator is responsible for the design, delivery and assessment of a module and acts as the principal examiner for it.

Laboratory, Practicals and Fieldwork

This is the practical work part of your course; it's an opportunity to use the knowledge and techniques you learn in your lectures, e.g. carrying out chemistry experiments or visiting historic sites.

Continuous Assessment

Continuous assessment is an educational approach where students are evaluated on their academic performance through regular assignments, quizzes, projects, and participation throughout the course, rather than relying solely on one final exam. This method promotes consistent learning and provides a comprehensive view of a student's progress, encouraging better study habits and deeper understanding of the material.



DIRECTORY

Registration Office

☎ 01 - 7083813
✉ registration@mu.ie
🌐 www.maynoothuniversity.ie/
records/student-registration

My Maynooth Orientation Information Centre

☎ 01-7086071
✉ orientation@mu.ie
🌐 www.my.maynoothuniversity.ie

Student Helpdesk

☎ 01-4747444
✉ studenthelp@mu.ie
🌐 www.maynoothuniversity.ie/
studenthelp

Student Services:

☎ 01-7084729
✉ student.services@mu.ie
🌐 www.maynoothuniversity.ie/
student-services

Student Skills and Success

✉ studentsuccess@mu.ie
🌐 www.maynoothuniversity.ie/
student-success

Clubs and Societies

☎ 01 – 7086819
✉ clubsandsocs@mu.ie
🌐 www.mulife.ie

Maynooth Access Programme

☎ 01-7084600
✉ access.office@mu.ie
🌐 www.maynoothuniversity.ie/
access-office

Maynooth Student's Union

☎ 01-7083669
✉ frontdest@msu.ie
🌐 www.msu.ie

Library

☎ 01-7083884
✉ maynoothuniversity.ie/library

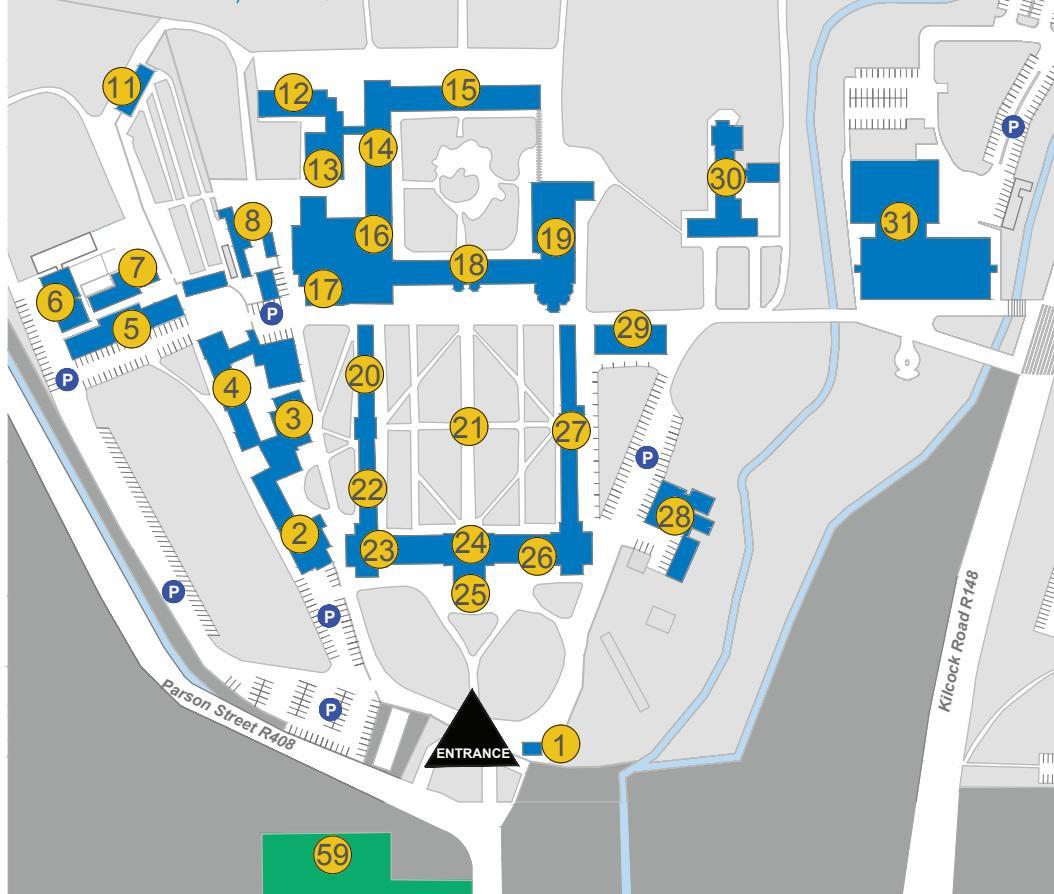
Programme Advisory Office

✉ programme.choices@mu.ie
🌐 www.maynoothuniversity.ie/
student-success/your-academic-
journey/programme-advisory-
office

Fees and Grants Office

✉ Fees.office@mu.ie
🌐 www.maynoothuniversity.ie/
student-fees-grants

SOUTH CAMPUS

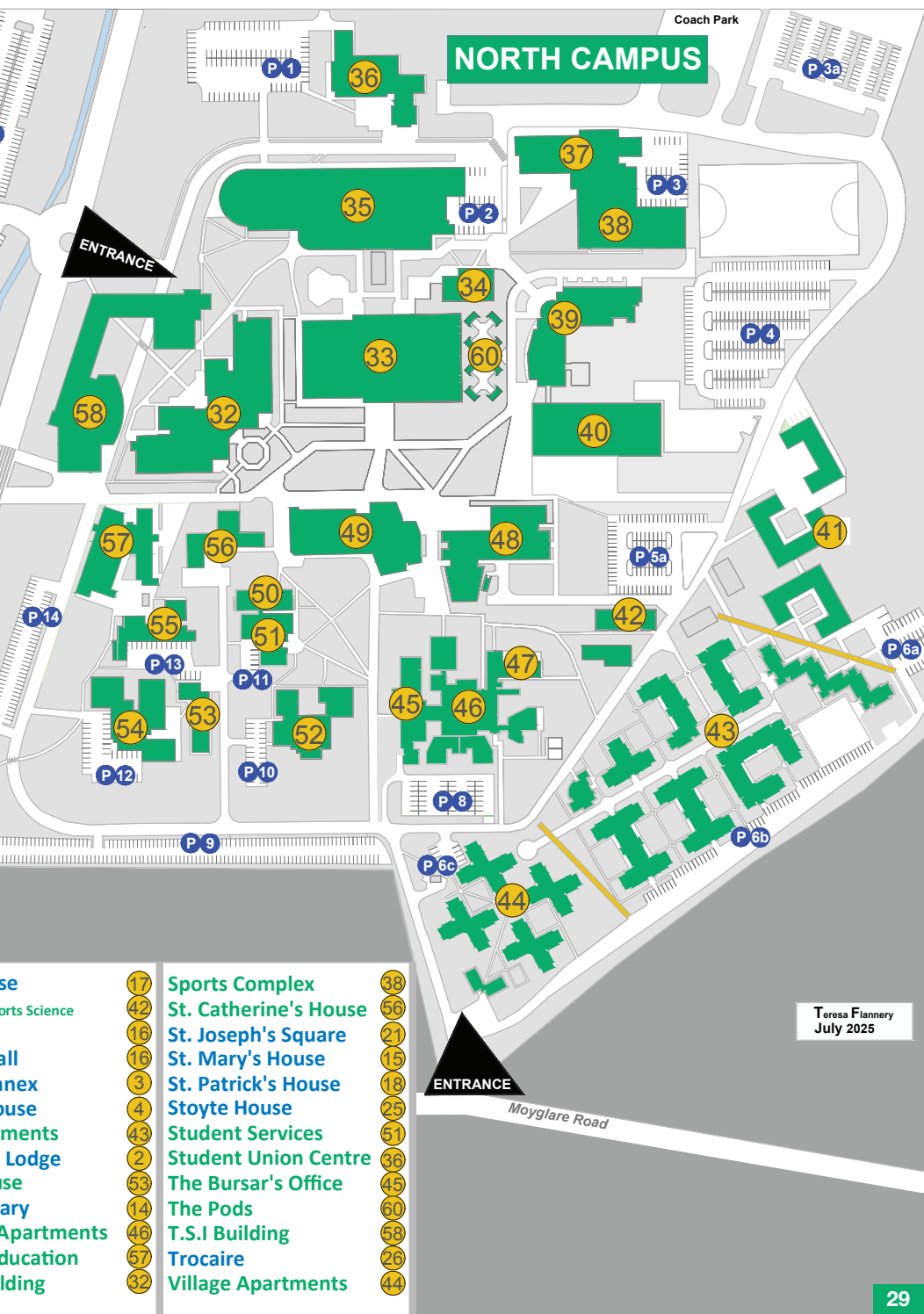


Apple Store 8
Arts Building 33
Arts Annex 34
Aula Maxima 29
Auxilia 52
Bioscience & Electronic Engineering Building 39
Buckley House - Student accommodation off campus 59
Callan Building 35
College Chapel 19
Columba Centre 30

Courtyard Apartments 41
Crèche 47
Dunboyne House 20
Education House 54
Eolas 40
Gate Lodge 1
Humanity House 22
Iontas 48
John Hume Building 49
John Paul II Library 31
Junior Infirmary 11
Laraghbyran House 55
Loftus Halls 12

Logic Annex 7
Logic House 5
Long Corridor 24
Lyreen House 28
MAP Lodge (Access office) 50
MCCA - Maynooth Campus Conference & Accommodation 23
Museum 13
Music Performance Suite 6
Music Technology Lab 6
New House 27
Phoenix Restaurant 37

Power House
Prefabs - Sports Centre
Pugin Hall
Renehan Hall
Rhetoric Arts Building
Rhetoric House
River Apartments
Riverstown
Rowan House
Russell Library
Rye Hall & Atrium
School of Education
Science Building





NOTES

This image shows a single sheet of white paper with horizontal ruling lines. The lines are evenly spaced and extend across the width of the page. There are no margins, text, or other markings on the paper.

PARENTS INFORMATION

Parent and Families Information Sessions

***“Helping you to support your family member
as they start their university journey”***

As part of our New Student Orientation Programme, we host a number of information sessions specifically for Parents, Guardians and families so that we can give you an insight as to what your son, daughter or family member can expect during their time here in Maynooth. We will also highlight the various support services we have on campus.

**To book a place on one of these information
session please scan the QR code**



**PARENT
INFORMATION**





Produced by Student Skills and Success