



**Maynooth
University**
National University
of Ireland Maynooth

SCHOOL PLACEMENT

2017-18

Dear Principal,

As you know, school placement plays a vital role in all initial teacher education courses in the Department of Education at Maynooth University. Many thanks to your school for contributing to the learning experience of our students at the post-primary level. Your support means that our students are well prepared for their future careers in the field. We hope that this partnership is also an enriching experience for your school and its teachers. In order to make it work even better, our Department, based on feedback from teachers and students, has decided to group the days of Year 1 and Year 2 PME placements differently for 2017-2018. [Year 1 students will be in schools Thursday and Friday; Year 2 students will be in on Monday, Tuesday, Wednesday]. Further information on school placement for 2017-18 can be found overleaf.



Professor Sharon Todd
Maynooth University Department of Education

PLACEMENT DAYS AND TEACHING REQUIREMENTS FOR THE SCHOOL YEAR 2017-18

Professional Master of Education (PME)

The Professional Master of Education (PME) course is a two-year full-time programme leading to the award of a Level 9 Professional Master's degree. The PME is a consecutive programme that builds on subject content knowledge developed during a student's undergraduate degree and is designed to prepare high quality teachers for today's post-primary schools.



PME YEAR 1	PME YEAR 2
<p>Thursdays and Fridays throughout the school year and a 3-week block placement in January</p> <p><i>Year 1 PME student teachers teach:</i></p> <ul style="list-style-type: none"> • 4 classes per week in semester 1 (September to December) following a period of observation until mid-September • 10 classes per week during block placement in January • 8 classes per week in semester 2 (February to May) <p>In semester 2 observing/ team teaching a 3rd year examination class is highly desirable</p>	<p>Mondays, Tuesdays and Wednesdays throughout the school year</p> <p><i>Year 2 PME student teachers teach:</i></p> <ul style="list-style-type: none"> • 8 classes per week in semester 1 (September to December) • 10 classes per week in semester 2 (January to May) <p>In semester 2 observing/ team teaching a 6th year examination class is highly desirable</p>

BSc in Mathematics and Science Education

The BSc Science and BSc Mathematics (with Education) are concurrent initial teacher education courses.

BSc Science Education student teachers undertake their degree in and can teach two of the following subjects to Leaving Certificate level – Mathematics, Biology, Chemistry and Physics (in addition to Junior Science).

BSc Mathematics Education students can teach Mathematics and Applied Mathematics to Leaving Certificate level.

BSc YEAR 2	BSc YEAR 3	BSc YEAR 4
<p>Thursdays from November to May</p> <p><i>Year 2 BSc student teachers:</i></p> <ul style="list-style-type: none"> • Observe teaching and learning in November and December • Assist/ team teach 2 lessons on placement days from February to early May 	<p>Tuesdays from October to May</p> <p><i>Year 3 BSc student teachers:</i></p> <ul style="list-style-type: none"> • Teach 3-4 classes on placement days from October to early May 	<p>Mondays in semester 1 and a 2-week block placement in September</p> <p><i>Year 4 BSc student teachers:</i></p> <ul style="list-style-type: none"> • Teach 10 classes per week during block placement • Teach 3-4 classes on placement days from September to December

Benefits of facilitating a school placement

As well as teaching / team teaching assigned classes each week, student teachers are present in schools throughout placement days. They are encouraged to become fully involved in the life of the school and to support the wider work of the school. Other activities that student teachers may be able to provide assistance with include:

- **Acting as team teachers under the direction of an experienced teacher**
- **Assisting with one-to-one tuition and small group teaching**
- **Supporting the school's co-curricular and extracurricular activity programme**
- **Providing assistance with school-based subject clubs**
- **Mentoring students for competitions and activities (e.g., Young Scientist, Young Social Innovators, Debating Teams, Young Economist, Development Education, SciFest)**
- **Assisting the school with gathering and analysing data for school self-evaluation as part of research projects**
- **BSc (Science) students can work as lab assistants to support teachers**

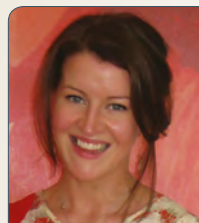
Partner schools will also be invited to participate in a range of educational events and CPD opportunities organised by the Maynooth University Department of Education on an ongoing basis.

Arranging school placements

PME student teachers and Year 4 BSc student teachers apply directly to schools for a school placement using a cover letter and CV. Placements are organised for Year 2 and Year 3 BSc students and requests for such placements will be made directly to schools.



Dr. Thomas Walsh



Ms. Anne Lavelle

If you are interested in facilitating a student teacher on placement in 2017-18 or would like any additional information, please contact the School Partnership Coordinator, Dr. Thomas Walsh, or the School Placement Executive Assistant, Ms. Anne Lavelle, at the details below. *If you have particular subjects or a subject combination that you would like to consider, we will do our best to facilitate this for you!*

EMAIL: school.placement@nuim.ie TEL: **01 474 7705**

We hope to be able to work in partnership with your school in 2017-18.