

CTL HIGHLIGHTS

FOR ACADEMIC YEAR 2022-2023



The Centre for Teaching and Learning **inspires, enables** and **enhances effective staff teaching practice** in Maynooth University.



We work collaboratively with staff, students and other stakeholders to **offer professional learning opportunities** and **foster scholarship of teaching and learning**.

Our current key areas of work are enhancing teaching, learning and assessment, technology enhanced learning, curriculum development, writing enriched curriculum, and scholarship of teaching and learning.



We are a **multi-disciplinary team of higher education professionals** dedicated to strengthening a valued teaching and learning community and culture at Maynooth University.

CTL Professional Learning Events

Teaching and Learning

 **18** workshops and events
 **387** participants

Technology Enhanced Learning

 **60+** workshops and webinars
 **390+** participants

Popular Topics

- Designing Moodle Course pages for Accessibility and Inclusion
- Spring Clean your Learning Outcomes
- Tools & Approaches for Student Engagement
- Authentic Assessment

Accredited Programmes

Postgraduate Diploma/Certificate in Higher Education Teaching, Learning and Assessment

 **60 ECTS**

staff graduates Diploma / Cert 2022 **11**



staff enrolled in programme modules in 2022-2023 **30**

Professional Certificate in Teaching and Learning for Tutors and Demonstrators (CTL1)

37 graduates in 2021-2022

39 enrolments in 2022-2023


 **5 ECTS**

 **Postgraduate Certificate in Higher Education Teaching, Learning and Assessment** 

Technology Enhanced Learning (TEL)



TEL Support

2341 Moodle Support Help requests resolved
80 staff TEL consultations
 Moodle, Turnitin, Panopto, Vevox, Padlet, ScreenPal

Moodle Upgrade

- ✓ successful upgrade to version 4.1
- ✓ new site and dashboard design
- ✓ functionality enhancements
- ✓ all support resources updated
- ✓ Moodle 4.1 Course Design Essentials workshop series

Enhanced Accessibility Resources

Collaboration with MAP to develop a range of accessibility-focused supports for staff and students

- ✓ MU Accessible Learning Guide
- ✓ MU Moodle Accessibility Baseline
- ✓ Guides supporting students in creating accessible Word documents



Writing Centre

The busiest year since its foundation in 2011!

17,000+ student interactions with our Moodle resource space
1200+ students in one-to-one appointments and workshops
1000+ writing-related email queries
4.6/5.0 student satisfaction

Next year

- Student-facing supports will move under Student Skills and Success
- Staff-facing supports (Writing Enriched Curriculum) remains with CTL



Scholarship of Teaching and Learning

Teaching and Learning Fellowships 2022-23

Enabling Student Success through collaboration and partnership.

- €45,000** awarded
- 11** Fellowship projects
- 43** Fellows including student representation
- 3** sharing practice sessions for fellows and colleagues



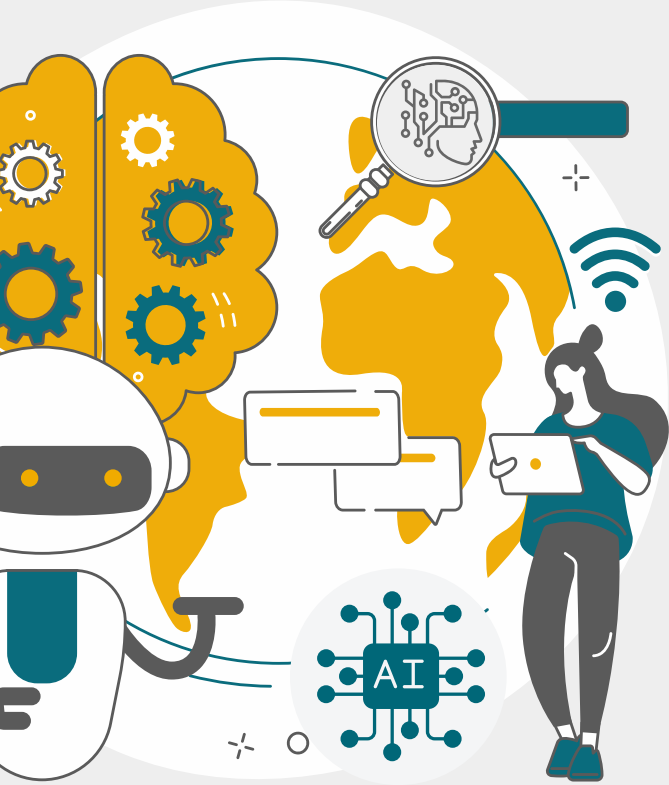
SPARK Awards

SPARK supports individual staff in implementing small-scale teaching and learning projects aligned to the theme 'Change one thing and do it well'.

- €5,500** awarded
- 7** projects
- 8** recipients



Initiatives in Artificial Intelligence (AI)



Events

- Exploring ChatGPT – challenges and opportunities
- New Turnitin Feature: AI Writing Detection Tool
- AI in Education: Current Developments and Innovative Applications
- Discussing ChatGPT with your students – sharing practice

Resources

- Dedicated section on Artificial Intelligence, in the CTL Assessment and Feedback Hub

Partners

- Associate Deans for T&L
- Departments
- MU staff and students
- International experts

Funding Achievements

Strategic Alignment of Teaching and Learning Enhancement Funding in Higher Education (SATLE) 2022

- Developing T&L Leadership through a MU Education Framework
- MU Scholarship of Teaching and Learning (SoTL) Resource Hub
- Embedding Universal Design for Learning (UDL) in T&L Practice
- Supporting Staff in Open Educational Resource (OER) Development



Path 4 Phase 1 Funding

- Partner - MU Universal Design in Education project (MAP Lead)
 CTL - Strand 3 Lead (€50,000)
- UDL in teaching, learning and assessment practice
 - Moodle Accessibility Toolkit



Observation of Teaching (OoT) Project

Initiated OoT scoping project
 Partners: Faculty Associate Deans for T&L



Aims:

- ✓ Capture MU staff feedback
- ✓ Identify models nationally and internationally
- ✓ Recommend OoT model for MU



Assessment and Feedback Hub

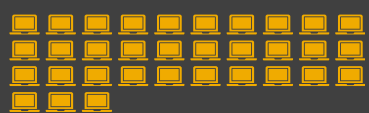
CTL continued the Assess for Success project in 2022-23, and launched its Assessment and Feedback Hub at the last of its four Assess for Success workshops (November 2022), and shared work about the hub at the QQI Conference in January 2022.



1717
users



3300
unique
pageviews



200
resources

40
OER's by CTL

6
staff guides

The hub has attracted users from all across Ireland, from the UK, France, South Africa, USA, New Zealand, The Netherlands and Finland.