

2018

Maynooth University Postgraduate Studies





IMPORTANT DATES

Open Days 2018:

28 April 2018

23 June 2018

23 & 24 Nov 2018

Postgraduate Open Day

27 February 2018

3 – 8pm

If you would like to visit Maynooth University but are unable to attend one of our Open Days, contact us to arrange to meet a Department to discuss prospective postgraduate studies.

Email graduatestudies@mu.ie

Phone 00 353 1 708 6018

Welcome to Postgraduate Maynooth

WELCOME

Welcome to your postgraduate experience at Maynooth University. MU is renowned for its rigorous programmes, supportive campus environment and welcoming community.

Our researchers and academics hail from more than 95 countries and our alumni network comprises more than 70,000 people across the globe.

At Maynooth, senior academics and internationally respected researchers challenge and inspire students in small classes and with one-to-one supervision, helping emerging scholars to reach their academic potential and build a stand out resume or CV.

Our postgraduate cohort includes students who hold John and Pat Hume Doctoral awards, Irish Research Council, Mitchell, Fulbright and SFI scholarships, reflecting Maynooth University's academic excellence across disciplines.

The Graduate Studies Office is dedicated to ensuring a unique and valuable postgraduate experience for each of our students. We look forward to welcoming you to our historic campus as you embark on your educational journey in 2018.

Professor Maria Pramaggiore
Dean of Graduate Studies



Professor Maria Pramaggiore
Dean of Graduate Studies

CONTENTS

Maynooth	4
Research	8
Employability	22
Courses A-Z	26
How to Apply	32
Entry	34
International	38
Scholarships	40
Campus	44
Getting to Maynooth	46

Maynooth University is dedicated to people, ideas and culture.

MISSION

We work together as a scholarly community to inquire and discover, to teach and learn, to create, conserve, disseminate and apply knowledge, and to engage with challenges that face modern society.

Our various activities make us central to innovation, economic growth, social development and cultural vibrancy; these are essential components of a free, open, equal, democratic and sustainable society.

Our Principles and Values

Maynooth University is committed to the following values:

- scholarly rigour;
- academic freedom;
- integrity and ethical behaviour;
- collegiality, transparency and trust;
- equality, inclusiveness and social justice;
- dignity, respect and care.

VISION

We are continuing to enhance our international reputation for:

- the exceptional and distinctive education we offer to students;
- the quality and impact of our research and scholarship;
- the connection between our research and teaching;
- the diversity of our student body and the quality of the student experience;
- the global scope of our teaching and research;
- effective engagement with enterprise, the community, civil society and the state;
- commitment to excellence, innovation and collegiality;
- our unique and collaborative contribution to the national system of higher education and to the economic, social and cultural life of the region, and nation.

PURPOSE

Our focus is on consolidating our international reputation as a university with excellent research, outstanding teaching, a global outlook, effective engagement with the society we serve, and a distinctive approach to the challenges facing higher education.



Ireland's fastest growing University.

INVESTMENT

€23M 

Research Income



EDUCATION

#49 

University ranking

Maynooth University is one of the leading new universities in the world. The Times Higher Education (THE) survey ranked MU #49 in its latest Young University Rankings; this is the highest position achieved by an Irish university.

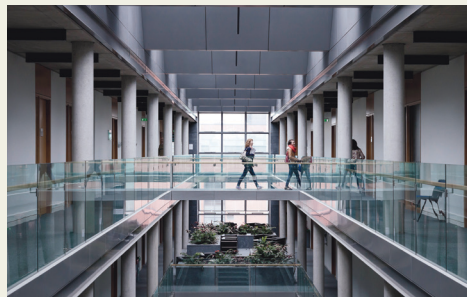
RESEARCH IMPACT

20,592
Citations



2,768
Publications

1,292
Authors



RESEARCH

432 

Doctoral Students

CAMPUS DEVELOPMENT

Since 2013 we have added a new Library building, student accommodation, a new Education building and an award-winning enterprise and technology hub to our campus.



EXCELLENCE

14%

International Students

In 2016, the University was ranked first in Ireland by international students for achieving excellence in Teaching and Learning, Student Experience and Support Services. In 2015, the University received the Outstanding International Student Satisfaction Award by StudyPortals, one of only five universities in Europe to achieve this accolade.

FACILITIES

8

Research Institutes



SUCCESS

Top 400

The University has performed strongly in the recent Times Higher Education global rankings, being named among the top 400 universities in the world and among the top 200 European universities.



402

FTE Academic Staff

12,000+

Total Students



1,700+

Taught Postgraduates

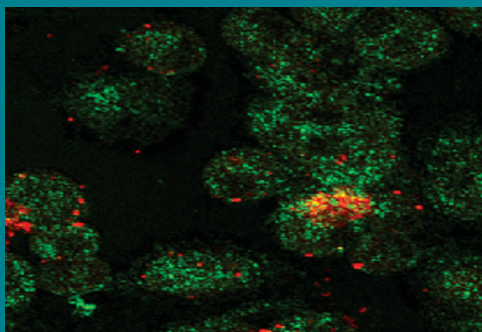
Postgraduate Programmes – 7

Our Research

Since the 18th century, researchers and scholars at Maynooth have fostered a spirit of inquiry and scholarship rooted in the classical European tradition.

That tradition of intellectual freedom informs the principles and values that make Maynooth University a uniquely scholarly and research intensive institution. To this day, scholarly rigour, academic freedom, and collegial collaboration remain the hallmarks of the Maynooth researcher.

As a scholarly community in the 21st century, we now work in diverse ways to inquire and discover, to create, conserve, disseminate and apply knowledge, to prepare the researchers of tomorrow and to engage with the problems and challenges that face modern society. We bring our scholarly expertise to bear on the key questions for our age, and are rightly proud that our research informs the teaching we provide at all levels.



RESEARCH THEMES

HUMAN HEALTH

In the 21st century, the prevalence of chronic illness, the emergence of new diseases and the persistence of recalcitrant global infections will demand innovative ways to combat disease. Our research teams collaborate with international academics, healthcare providers and industry to explore unique aspects of human health at the molecular and cellular levels, discovering new ways to tackle disease and to translate our discoveries into novel medicines, procedures and policies.

PEOPLE, PLACE AND ENVIRONMENT

By combining social perspectives and environmental research with the power of information and geotechnologies, Maynooth University researchers are addressing the key societal challenges of the 21st Century. Our analysis of the relationships between people and the environment allows us to devise more sustainable responses to a changing world.



SOCIAL AND ECONOMIC TRANSFORMATIONS

The rapid pace of societal and technological change is transforming how we live now and challenges us to design a future free from inequality. The transformations in our current world will drive change in how we educate, learn, do business, govern and build societies. Maynooth University researchers analyse economic and social change, and to build a platform for an equitable and sustainable future.

MATHEMATICS, COMPUTATION AND COMMUNICATIONS

The way we work and live is being transformed by technological advances driven by developments in our understanding of the physical world and of abstract concepts such as mathematical structures. Our focus at Maynooth University is to explore the fundamental aspects of Mathematics, Computation and Communications and to apply theoretical advances to real world problems.

HUMANITIES IN PRACTICE: SOURCES RESOURCES & DISCOURSES



Human creativity, communication and invention provide a powerful record of human culture and society. By enabling and carrying out research on our rich heritage, we can build an understanding of past human cultures and the forces that shaped their development. At Maynooth University, our humanities research is particularly involved in harnessing information technologies to facilitate new insights into human legacies and cultures.

HUMAN CULTURES, EXPERIENCE AND CREATIVITY

How does our experience reflect our culture, language and creativity? In what ways do culture, language and creativity shape our experience? Maynooth University is pioneering research into cultures and their contexts. Our work explores our diverse identities from the perspective of the Humanities, leads the national debate in the Arts and shapes the cultural context of everyday life.





PROJECT

The complexities of sex work

Dr. Paul Ryan
Department of Sociology

Should it be legal to sell sex? Will new Irish laws protect sex workers, or put them at risk? Can the “world’s oldest profession” really be stamped out and how has new digital technology transformed it? And, in all of this, where do male sex workers fit in?

Dr. Paul Ryan has been lecturing at Maynooth University’s Department of Sociology for 10 years. He is a board member of Sex Workers Alliance Ireland. Much of his work has focused on LGBT issues, sex, and family from the 1960s and ‘70s. Now, his research has led him to an EU-funded project looking at sexuality and prostitution policy across 24 European countries. He is also writing a book on male sex work among migrant communities in Dublin.

“These are contentious issues,” he says. “Most academics do want focus on harm reduction, but public policy in Ireland has moved towards a neo-abolitionist model, from a point where all sex work is seen as a violence against women and should be stamped out.

The argument is that by ending demand, you end sex work, but it is aspirational and not backed up by evidence”. Despite these reservations, Ireland did adopt a Nordic Model in 2017 that made it a crime to purchase sex. Ryan suggests there are difficulties in importing legislation into the Irish context. “Ireland has been wedded to the Swedish model for some time but, in Sweden, there was also an acknowledgement that prostitution is caused by structural inequalities, so there were incentives for people not to do it.

Here, we will take income from some of the most deprived people, without offering them alternatives. For the model to work, we need to offer more support. We are not doing that. We have chosen to ignore advice from the United Nations, the World Health Organisation and various academics”.

Much of the debate, Ryan says, has focused on women, but there are equally many men – mostly gay, but some straight – who sell sex to other men. “In the policy context, these men don’t exist. And yet, you can find them online, often casually exchanging sex for money or goods. Are they less vulnerable? Are they equally at risk of exploitation?

“Men selling sex to other men is highly visible in the gay community”, says Ryan. “Most of the men selling sex in Ireland are Brazilian or Venezuelan, perhaps because they are more anonymous than Irish men could be. Those I interviewed don’t always see themselves as sex workers, but see sex as a way to earn money.” Ryan says he is trying to capture cultural and technological changes that have facilitated the emergence of a new form of escort, one he refers to in his research as the “pop-up escort.” “Male sex workers have increasingly abandoned traditional internet escort sites in favour of mainstream dating apps like grindr, which offer men a flexibility and control over how they are defined”.



PROJECT

Are new technologies for men only?

Dr. Sarah Arnold
Department of Media Studies

Male is the default. In film and on TV, programmes have largely been designed for men, and men have driven development of both mediums. Exclusion happens in all types of entertainment experiences, Arnold says. “In the early days of experimental television, men and women were equally invested as producers and viewers, but by the time television returns in the post war period women have a very different role to play. Where they were involved, they tended to be compartmentalised and steered into genres like ‘women’s TV’.”

Now, as new and emerging technologies such as virtual reality (VR) gaming, social media, streaming sites like Netflix, and interactive television take off, there’s a real necessity to ensure that women are actively included – as writers, producers, designers and as audience members and users.

Dr. Sarah Arnold of Maynooth University’s Department of Media Studies currently is engaged in research about historical and contemporary emergent media technologies. “While women are typically involved at the start of new technologies, something happens at key points of change and women tend to get marginalised, within the emergent industry, and within the content,” she says. “I want to explore why this happens.”

Arnold says that there is a growing recognition that women need to be involved in the early development of emergent media like VR games so they are not excluded. It seems simple, but it is quite a challenge for industries that have for so long been male-dominated and that, as many reports and news investigations have now shown, systematically marginalise and disempower women.



400 active researchers undertaking pioneering research worldwide



North America

240 insitutions
collaborate with
Maynooth University



Europe

571 insitutions
collaborate with
Maynooth University



Africa

17 insitutions
collaborate with
Maynooth University



South America

38 insitutions
collaborate with
Maynooth University



WINNER

2 Noble Peace Prize Winners

Maynooth University counts two Nobel Prize winners among its 40,000 alumni and current academics.



RESEARCH



€23.1m research income

Our interdisciplinary areas of research excellence have attracted partners from around the world.

Asia Pacific

170 insitutions collaborate with Maynooth University



Middle East

26 insitutions collaborate with Maynooth University



Advancement of knowledge through research

KNOWLEDGE TRANSFER AND COMMERCIALISATION

Maynooth University continues to be a national leader in the commercialisation of research as measured by Technology Transfer (TT) performance metrics.

Maynooth University is the lead institute in a technology transfer alliance with partner institutes WIT, AIT and ITC. The Commercialisation Office remit includes developing links and connecting researchers with industry and the market place enabling market informed research; identifying, protecting and exploiting Maynooth University generated Intellectual Property via licensing and company spin-out; and developing a culture of research commercialisation. The output of all technology and knowledge transfer activities contributes to the growth and development of Ireland's growing economy and job creation.

The Commercialisation Office engages with postgraduate students to promote a culture of research commercialisation. Our commercialisation executives deliver an accredited graduate skills programme each year on the Maynooth campus, hosting early career researchers and students from across our three TT partner institutes. The module entitled "Innovation and Research Commercialisation" introduces early career researchers to the culture of commercialisation and equips them with the know-how to commercialise the outcome of their research, to develop the ability to interact with industry and to improve their skills to innovate and work with an entrepreneurial mindset.

MAYNOOTHWORKS

Our business incubator, is embedded within the University community providing direct links between students and enterprise.

Taken together these partnerships see Maynooth University working with leading technology, business enterprises, NGOs, cultural organisations, civil authorities, and academic partners across the globe. MaynoothWorks is currently home to seventeen start-up technology companies and is at 90% capacity.



World class research for important new insights

Maynooth University is proud of our prowess in Social Sciences, and the Arts and Humanities and embody this in two flagship research institutes. In the Sciences and Engineering, we have major strengths across disciplines in climate research, human health, robotics, telecommunications and ocean energy, and our researchers work together to develop innovative solutions to a range of real-world problems.

In addition our teams are partners in a number of Science Foundation Ireland national centres, including in communications (CONNECT), software (LERO), data analytics (INSIGHT), geosciences (ICRAG) and renewable energy (MAREI), connecting our students with national priorities. The University also hosts the Innovation Value Institute - an Enterprise Ireland/IDA Technology Centre focused on IT Innovation.



ICARUS – THE CLIMATE RESEARCH CENTRE

ICARUS undertakes leading edge research in observational climate science and modelling the effects of climate change – particularly as it affects Ireland.

INNOVATION VALUE INSTITUTE

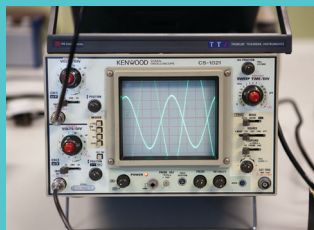
Hosted by Maynooth University the Innovation Value Institute is an open innovation consortium of over thirty international organisations focused on IT challenges for business.

INSTITUTE OF IMMUNOLOGY

A centre of excellence for basic research in immunology and the provision of world-class postgraduate education.

MAYNOOTH UNIVERSITY HAMILTON INSTITUTE

A multidisciplinary research institute that builds bridges between mathematics and its applications in communications, networks, artificial intelligence and biology.



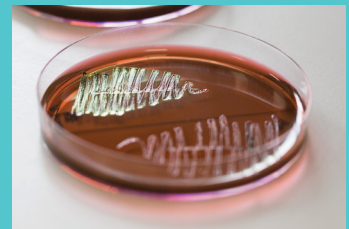
NATIONAL CENTRE FOR GEOCOMPUTATION

The national leader in the field of Geocomputation, NCG is committed to extending understanding and utilisation of the capture, analysis and modelling of spatial data.

MAYNOOTH UNIVERSITY SOCIAL SCIENCES INSTITUTE.

The Maynooth University Social Sciences Institute was launched in March 2017 with a remit to foster and carry out research of societal importance in all areas of the Social Sciences.

It brings together over one hundred excellent researchers from Maynooth and external partners, and is a major international centre of excellence for research and policy in the social sciences. It incorporates the National Institute for Regional And Spatial Analysis, and the National Centre for Geocomputation.

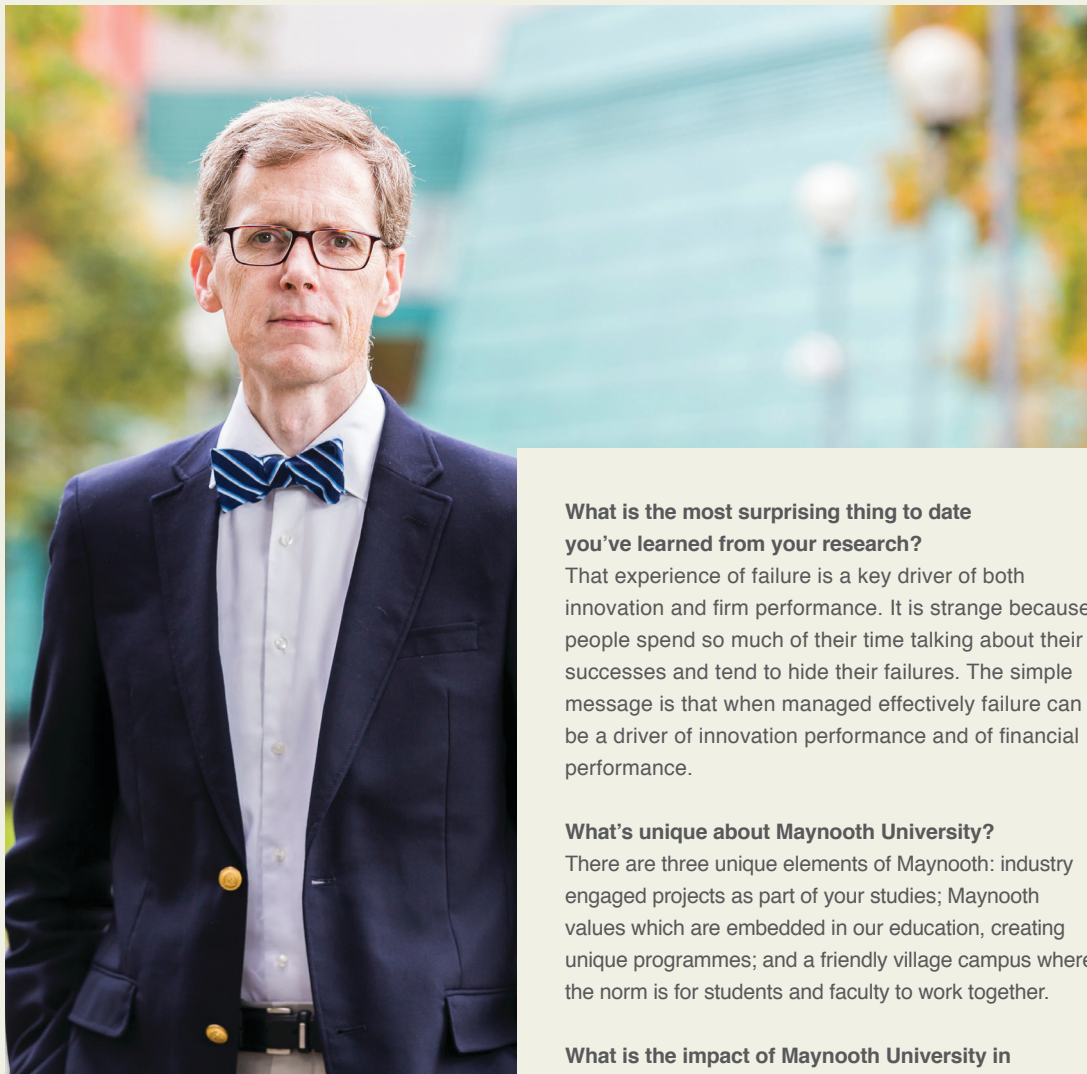


MAYNOOTH UNIVERSITY HUMANITIES INSTITUTE

Maynooth University is respected internationally as a major centre of research and scholarship in diverse areas of the arts and humanities. The Maynooth University Humanities Institute brings together over one hundred researchers and scholars from both Maynooth and partner institutions to ensure that we continually build on our strength in these fields.

NATIONAL INSTITUTE FOR REGIONAL AND SPATIAL ANALYSIS

NIRSA undertakes fundamental, applied and comparative research on spatial processes and their effects on social and economic development in Ireland, and providing high quality graduate education.



SUCCESS

Unique, industry focused and research informed

Professor Peter McNamara
Head of School of Business

What is the most surprising thing to date you've learned from your research?

That experience of failure is a key driver of both innovation and firm performance. It is strange because people spend so much of their time talking about their successes and tend to hide their failures. The simple message is that when managed effectively failure can be a driver of innovation performance and of financial performance.

What's unique about Maynooth University?

There are three unique elements of Maynooth: industry engaged projects as part of your studies; Maynooth values which are embedded in our education, creating unique programmes; and a friendly village campus where the norm is for students and faculty to work together.

What is the impact of Maynooth University in the context of national and international research?

Our School of Business is less than a decade old, yet we place in the top third of institutions in the world. Our faculty publish in the leading journals in the world within their fields of study, ensuring that our postgraduate students are taught the most up to date and impactful business practices. We offer unique, industry focused and research informed, postgraduate programmes, with graduates performing well on the job market.

What's your greatest ambition for your own research and that of your postgraduate students?

Ultimately, I want my research and that of my postgraduate students to be published in the most visible journals possible, so that it can be read by a wide audience, whom in turn I hope will use this research to improve their business actions and their performance.



Challenging and inspiring

Dr. Karen English
Biology Department

What is the most surprising thing to date you've learned from your research?

Developing cell therapies is very complex because there are large variations in inflammatory diseases including variables in disease stage and progression as well as the genetics of the patients. Thus surprisingly, cell therapies actually need to be targeted to patients who are more likely to respond to that particular treatment strategy. Unfortunately 'one size does not fit all'.

What's unique about Maynooth University?

The collegial atmosphere at Maynooth University is second to none. It is a fantastic place to explore postgraduate studies and develop new skills in an environment that is challenging but at the same time inspiring.

What is the impact of Maynooth University in the context of national and international research?

In the field of Immunology, Maynooth University researchers are at the forefront of important research in the understanding of how immune cells communicate and how cell therapies and novel drugs can control the immune system. In the near future, these researchers will have an important impact on the lives of patients suffering from inflammatory disorders and in driving the cell therapeutic and pharmaceutical industries.

What's your greatest ambition for your own research and that of your postgraduate students?

To make a difference to the lives of patients with inflammatory disease. More specifically the realisation of cell therapy for inflammatory disease on a large scale.



Student Research

STRUCTURED RESEARCH

Supporting the student researcher with professional skills training

All research students at Maynooth University undertake a structured research MSc/MLitt or PhD Programme. The aim of the structured programme is to support the student researcher with professional skills training to prepare them for their future career, based in or outside of academia.

The Research Skills Development Programme provides taught modules for research students, specifically aimed at developing entrepreneurial, leadership, team-working, research methods, research ethics, communications and other valuable labour market skills. Research students have the opportunity to take modules with senior researchers and postdoctoral scholars building their interdisciplinary skills and academic connections across the university.





“I have found the structured PhD programme at Maynooth to have been very rewarding; the structured PhD has allowed me to gain access to specialist modules such as the certificate in teaching and learning (CLT).

The CLT module in particular has improved my communication and class preparation skills, opening up a whole world of teaching techniques that I otherwise would not have been aware of.

As a direct result of these specialist modules offered at Maynooth University, I have gained employment as a workshop facilitator and assistant lecturer in several other third level institutions.

I am certain that my ability to fulfil these roles, along with my future employment prospects, have been greatly improved as a consequence of being involved in the structured PhD experience at Maynooth University.”



SPECIALISE

Access to specialist modules

Shane Byrne
John and Pat Hume Scholar



UNDERSTANDING

Friendly and collegial atmosphere

Dr. Claire Hamilton
Law Department

What is the most surprising thing to date you've learned from your research?

That, despite its image, the US isn't as punitive as you might think in relation to counterterrorism!

What's unique about Maynooth University?

I really believe MU is a great place to work and study because of the friendly and collegial atmosphere on campus. It's really quite special and is commented on by visitors and those attending conferences.

What is the impact of Maynooth University in the context of national and international research?

In the Department of Law we are having an impact on the future of criminological research in Ireland by developing unique undergraduate and postgraduate degrees in criminology and by expanding the number of criminologists. Criminology as a discipline in Ireland is underdeveloped compared to the UK so the fact we are taking the initiative on this is very significant.

What in your experience defines third-level education?

At postgraduate level I think students are much more focussed on careers so in the Department of Law we aim to provide real-world experience through placements in partner organisations such as the Irish Council for Civil Liberties, Irish Penal Reform Trust and so on. Some of our former Criminology students are now working in these organisations so I think there is a real value for students in terms of the Department's strong links with civil society.



MEANINGFUL

A place to learn, research and explore new ideas.

Professor Colin Graham
Head of Department of English

What is the most surprising thing to date you've learned from your research?

That finding new ways of understanding things is always liberating, empowering and invigorating.

What's unique about Maynooth University,?

Maynooth provides a collegial, friendly and informal place to learn, research and explore new ideas.

What's your greatest ambition for your own research and that of your postgraduate students?

We'd like our students to be able to examine literature and culture in a way which is meaningful for them, which gives them a sense of personal and social empowerment, and which questions orthodoxies of all kinds.

What is the impact of Maynooth University in the context of national and international research?

Maynooth's Department of English has dynamic and forward-looking staff who work at the boundaries of the discipline, nationally and internationally. In literary studies of all kinds, whether it be Irish writing or Shakespeare or American literature or gender studies, our researchers are at the forefront of new, radical research which changes how we understand literature and its importance.

What in your experience defines third-level education??

Education in the humanities works best through informed and passionate debate and curious listening.



Increasing your employability

EMPLOYMENT

Having a postgraduate degree increases your chances of employability.

There is a positive correlation between postgraduate qualifications and earnings potential. Recent research shows that 80% of Taught Master graduates were in employment 9 months after graduation in comparison with 62% of BA graduates.



INTERNSHIPS

Maynooth University students have pursued internships in Ireland and also in the USA, New Zealand, Australia, China and across Europe.

Maynooth graduates have engaged in internships at major companies such as Microsoft, Pfizer, IBM, Ericsson, Intel, Oracle, Ely, Lilly and Accenture. Recent graduates from Maynooth University are now working in professions such as teaching, journalism, economics, IT, charities and many others. Employers of Maynooth University graduates include the Central Bank of Ireland, KPMG, EY and Intel.

EMPLOYMENT

75% of Master's graduates and 86% of PhD graduates who responded to our survey were in employment within 6 months of Maynooth University graduation.

CAREERS DEVELOPMENT

The Careers Development Centre is available to help you at every stage throughout your studies, providing:

- a student-focused, professional and informative service
- careers education, information, advice and guidance
- a drop-in Help desk - help with career planning, feedback on CV preparation and help with job applications.

Open access talks on career planning, CV preparation, excelling at interviews, and business etiquette are run each semester.



EMPLOYERS

63% of employers consider postgraduate qualifications.

GradIreland's Graduate Salary & Graduate Recruitment Survey 2015 found that 10 per cent of employers consider postgraduate qualifications more important than work experience, while 53 per cent consider them of equal value, meaning that 63% of employers consider postgraduate education when making decisions on an application.





“A few weeks after graduating I secured my current role as an IT Business Analyst in a software development company in Grand Canal Dock, something I don’t think would have been possible without the knowledge and experience I gained from undertaking a master’s degree.

EXPERTISE

Embrace numerous opportunities

Lauren Morrisey
MSc IT Enabled Innovation graduate
Equifax

The small class size facilitates active discussions in the classroom, and the group work involved in the course provides invaluable life experience for dealing with different personalities and getting work done using one another’s strengths.

My salary and opportunities for internal progression have increased substantially since completing my postgraduate degree, and I have embraced numerous opportunities which wouldn’t have been possible for me before.”



What's unique about Maynooth University?

One of the unique aspects about Maynooth University is its location in the historic town of Maynooth. Not being located in a city gives the campus a unique feel. Maynooth University has offered the environment for me to become a better researcher.

What significance does Maynooth University play in the world today?

Maynooth University's position in the world is growing, having recently been recognised as one of the leading new universities in the world.

Does having a postgraduate degree increase your chances or opportunities in life?

Doing a postgraduate degree makes you, among other things, a better problem solver. A postgraduate degree requires you to work with and develop novel state-of-the-art techniques. Problem solving is a highly transferable skill and is highly valuable in any future career.

Would you recommend doing a postgrad at Maynooth University to others?

I'd recommend doing a postgrad at Maynooth University because of the support and resources available to postgraduate students. There is a good community feel among postgraduates. Doing a postgraduate at Maynooth University gave me access to the expertise and facilities available within the University. I believe Maynooth University facilitates and encourages students to tackle meaningful problems.



EXPERIENCE

Become a better problem solver

Simon O'Keefe
PhD Electronic Engineering

Courses A-Z

Course PAC

AN FORAS FEASA

PhD Digital Arts & Humanities MHO2F (FT)
MH03F (PT)

ADULT & COMMUNITY EDUCATION

Diploma in Arts (Adult Guidance and Counselling) MHA57

M.Ed. Adult & Community Education MHA92

PGDip Arts (Adult Guidance & Counselling) MHA55

HDip Further Education MHA90

Doctorate in Higher & Adult Education MHA07

MLitt (Research) MHA04 (FT)
MHA05 (PT)

PhD Adult & Community Education MHA02 (FT)
MHA03 (PT)

ANCIENT CLASSICS

MA Ancient, Medieval and Renaissance Thought MHV60

MA Ancient, Medieval and Renaissance Thought MHV61

MA Classical Studies MHF52

MA Classics MHF50

MLitt (Research) MHF04 (FT)
MHF05 (PT)

PhD Classics MHF02 (FT)
MHF03 (PT)

ANTHROPOLOGY

MA Anthropology MHC60

MA Anthropology (Anthropology & Development) MHC62

MA Anthropology (Linguistic Anthropology) MHC66

MA Cultural Differences & Transnational Processes (Creole) MHC58

PG Cert Anthropology MHC65

Course PAC

PG Cert Anthropology Development MHC57

MLitt (Research) MHC04 (FT)
MHC05 (PT)

PhD Anthropology MHC02 (FT)
MHC03 (PT)

APPLIED SOCIAL STUDIES

MSCOSC Community & Youth Work MHB54

MSOCSC Community & Youth Work (PT) MHB55

MSOCSC Social Science (Rights & Social Policy) MHB56

MSOCSC Social Science (Rights & Social Policy) (PT) MHB57

Doctor of Social Science MHB06

MLitt (Research) MHB04 (FT)
MHB05 (PT)

PhD Applied Social Science MHB02 (FT)
MHB03 (PT)

BIOLOGY

MSc Immunology & Global Health MHD50

MSc Biology MHD04 (FT)
MHD05 (PT)

PhD Biology MHD02 (FT)
MHD03 (PT)

BUSINESS

MSc Business Management MH52D

MSc Business Management (PT) MH53D

MSc IT - Enabled Innovation MH84D

MSc IT - Enabled Innovation (PT) MH85D

MSc Strategy Innovation MH54D

MSc Strategy Innovation (PT) MH55D

MLitt (Research) MH04D (FT)
MH05D (PT)

PhD Business & Management MH02D (FT)
MH03D (PT)

For full course details visit
www.maynoothuniversity.ie/postgraduate

Course	PAC
CENTRE FOR TEACHING & LEARNING	
PGDip Higher Education	MH51H
CHEMISTRY	
MSc Chemistry	MHE04 (FT) MHE05 (PT)
PhD Chemistry	MHD02 (FT) MHD03 (PT)
CHINESE STUDIES	
MA Chinese Studies	MH70A
COMPUTER SCIENCE	
MSc Computer Science (Software Engineering)	MHG50
Erasmus Mundus Joint Msc In Advanced Software Systems Dependability	MHG72
MSc Geocomputation	MH50B
MSc Computer Science (Applied)	MHG68
HDip Information Technology	MHG54
HDip Science (Computer Science)	MHG58
HDip Science (Software Development)	MHG70
MSc Computer Science	MHG04 (FT) MHG05 (PT)
PhD Computer Science	MHG02(FT) MHG03 (PT)
DESIGN INNOVATION	
MSc Design Innovation	MH50K
MSc Design Innovation (PT)	MH51K
ECONOMICS, FINANCE & ACCOUNTING	
MA Accounting	MHH62
MA Accounting (Conversion)	MHH72
MSc Economics	MHH52

Course	PAC
MSc Economics (Conversion)	MHH70
MSc Finance	MHH50
MSc Finance (Conversion)	MHH74
MSc Economic & Financial Risk Analysis	MHH64
MSc Economic & Financial Risk Analysis (Conversion)	MHH68
HDip Arts (Finance)	MHH58
HDip Economic Science	MHH60
HDip Professional Accounting	MHH66
MLitt (Research)	MHH04 (FT) MHH05 (PT)
PhD Economics/Finance	MHH02 (FT) MHH03 (PT)
EDUCATION	
PME (Secondary Teaching)	PEM01
Master of Education	MH52G
Master of Education (PT)	MH57G
MEd School Guidance Counselling (PT)	MH53G
PGDip Educational Leadership & Management (Future Leaders Programme)	MH40G
Doctor of Education with Specialisms	MH06G
MLitt (Research)	MH04G (FT) MH05G (PT)
PhD Education	MH02G (FT) MH03G (PT)
EDWARD KENNEDY INSTITUTE	
MA International Peace Building, Security & Development Practice	MH54M
MA International Peace Building, Security & Development Practice (PT)	MH55M
MA Mediation & Conflict Intervention	MH50M

Courses A-Z (continued)

Course	PAC
MA Mediation & Conflict Intervention (PT)	MH51M
PG Cert Mediation & Conflict Intervention (Peace Process Practices) (PT)	MH85M
PG Cert Restorative Practice (PT)	MH83M
PG Cert Organisational & Workplace Mediation (PT)	MH75M
PG Cert Conflict Resolution in Education (PT)	MH77M

ELECTRONIC ENGINEERING

MEng in Digital Health and Medical Technologies	3U02F
MEng Electronic Engineering (Embedded & Wireless Systems)	MHJ50
PGDip Electronic Engineering (Embedded And Wireless Systems)	MHJ52
MEng Electronic Engineering (Research)	MHJ04 (FT) MHJ05 (PT)
PhD Electronic Engineering	MHJ02 (FT) MHJ03 (PT)

ENGLISH

MA Dramatherapy	MHK55
MA English (Literatures of Engagement)	MHK82 (FT)
MA English (Literatures of Engagement)	MHK83 (PT)
HDip English	MHK70
HDip English (PT)	MHK71
MLitt (Research)	MHK04 (FT) MHK05 (PT)
PhD English	MHK02 (FT) MHK03 (PT)

Course	PAC
FRENCH	
MA French	MHM50
MA Modern Languages, Literature & Culture: Narratives of Conflict - French	MHM52
MA Modern Languages, Literature & Culture: Narratives of Conflict - French (PT)	MHM53
HCert French Literature (PT)	MHM54
MLitt (Research)	MHM04 (FT) MHM05 (PT)
PhD French	MHM02 (FT) MHM03 (PT)

FROEBEL

PME (Primary Teaching)	
PGDip Special Educational Needs (PT)	MH51L

GEOGRAPHY

MA Geography	MHN60
MA Geography (PT)	MHN61
MSc Climate Change	MHN56
MSc Geocomputation	MH50B
MSc Geographical Information Systems & Remote Sensing	MHN58
MLitt (Research)	MHN04 (FT) MHN05 (PT)
PhD Geography	MHN02 (FT) MHN03 (PT)

GERMAN

MA German	MHO50
MA German (PT)	MHO51
MA Modern Languages, Literature & Culture: Narratives of Conflict - German	MHO52

For full course details visit
www.maynoothuniversity.ie/postgraduate

Course	PAC
MA Modern Languages, Literature & Culture: Narratives of Conflict - German (PT)	MHO53
HCert German Literature (PT)	MHO54
MLitt (Research)	MHO04 (FT) MHO05(PT)
PhD German	MHO02 (FT) MHO03(PT)

HISTORY

PGDip Historical Archives	MHP70
MA Historical Archives	MHP57
MA Irish History	MHP68
MA Irish History (PT)	MHP69
MA Military History & Strategic Studies	MHP58
MA Military History & Strategic Studies (PT)	MHP59
MA European History	MHP60
MLitt (Research)	MHP04 (FT) MHP05 (PT)
PhD History	MHP02 (FT) MHP03 (PT)

INTERNATIONAL DEVELOPMENT

MA International Development	MH50N
MA International Development (PT)	MH51N
MA International Peace Building, Security & Development Practice	MH54M
MA International Peace Building, Security & Development Practice (PT)	MH55M
PGDip International Development	MH52N
PGDip International Development (PT)	MH53N

Course	PAC
LAW	
LLM Global Legal Studies	MH50J
LLM Global Legal Studies (PT)	MH51J
LLM International Business Law	MH52J
LLM International Business Law (PT)	MH53J
LLM International Business Law (Dual degree with UCLy)	MH68J
LLM International Justice (Conversion)	MH64J
LLM International Justice (PT) (Conversion)	MH65J
MA Comparative Criminal Justice (Conversion)	MH66J
MA Comparative Criminology Criminal Justice (PT) (Conversion)	MH67J
PGDip Comparative Criminology Criminal Justice	MH70J
PGDip Comparative Criminology Criminal Justice (PT)	MH69J
PGDip International Business Law	MH76J
PGDip International Business Law (PT)	MH75J
PGDip International Justice & Law	MH72J
PGDip International Justice & Law (PT)	MH71J
PGDip Global Legal Studies	MH74J
PGDip Global Legal Studies (PT)	MH73J
H Dip Legal Studies	MH60J
MLitt (Research)	MH04J (FT) MH05J (PT)
PhD Law	MH02J (FT) MH03J (PT)

MATHEMATICS & STATISTICS

MA Mathematics	MHR50
MA Mathematics (PT)	MHR51

Courses A-Z (continued)

Course	PAC
MSc Mathematics	MHR52
MSc Mathematics (PT)	MHR53
MSc Data Science & Analytics	MHR64
MSc Mathematics for Education (PT)	MHR60
HDip Mathematics	MHR54
HDip Mathematics (PT)	MHR55
HDip Mathematical Studies	MHR56
HDip Mathematical Studies (PT)	MHR57
HDip Statistics	MHR58
HDip Statistics (PT)	MHR59
HDip Data Analytics	MHR66
Mlit (Research)	MHR08 (FT) MHR09 (PT)
PhD Mathematics	MHR02 (FT) MHR03 (PT)
PhD Statistics	MHR10

MEDIA STUDIES

MA Critical & Creative Media	MHS58
MA Critical & Creative Media (PT)	MHS59
MLitt (Research)	MHS04 (FT) MHS05 (PT)
PhD Media Studies	MHS02 (FT) MHS03 (PT)

MEDIEVAL IRISH

MA Early Irish Studies	MHX52
MLitt (Research)	MHX04 (FT) MHX05 (PT)
PhD Medieval Irish	MHX02 (FT) MHX03 (PT)

MUSIC

MA Creative Music Technologies	MHT50
MA Creative Music Technologies (PT)	MHT51
MA Musicology	MHT52

Course	PAC
MA Musicology (PT)	MHT53
MA Performance & Musicology	MHT54
MA Performance & Musicology (PT)	MHT55
MA Music Composition	MHT56
MA Music Composition (PT)	MHT57
PGDip Music Technology	MHT58
PGDip Music Technology (PT)	MHT59
MLitt (Research)	MHT04 (FT) MHT05 (PT)
PhD Music	MHT02 (FT) MHT03(PT)

NATIONAL CENTRE FOR GEOCOMPUTATION

MSc Geocomputation	MH50B
--------------------	-------

NUA-GHAELGE

MA Nua Ghaeilge	MHU50
MLitt (Research)	MHU04 (FT) MHU05 (PT)
PhD Nua Ghaeilge	MHU02(FT) MHU03 (PT)

PHILOSOPHY

MA Philosophy	MHV50
MA Philosophy (PT)	MHV51
MA Philosophy of Religion	MHV54
MA Philosophy of Religion (PT)	MHV55
MA Ancient, Medieval & Renaissance Thought	MHV60
MA Ancient, Medieval & Renaissance Thought (PT)	MHV61
MA Medieval & Renaissance Philosophy	MHV58
MA Medieval & Renaissance Philosophy (PT)	MHV59
MA Modern & Contemporary Philosophy	MHV62

For full course details visit
www.maynoothuniversity.ie/postgraduate

Course	PAC
MA Modern & Contemporary Philosophy (PT)	MHV63
MA Philosophy, Politics & Economics	MHV64
MA Philosophy, Politics & Economics (PT)	MHV65
PGDip Philosophy	MHV56
HDip Philosophy	MHV52
MLitt (Research)	MHV04 (FT) MHV05 (PT)
PhD Philosophy	MHV02(FT) MHV03 (PT)

SOCIOLOGY

MA Sociology	MHY54/ MHY56
MLitt (Research)	MHY04 (FT) MHY05 (PT)
PhD Sociology	MHY02 (FT) MHY03 (PT)

SPANISH

MA Spanish & Latin American Studies (FT)	MHZ50
MA Spanish Latin America Studies (PT)	MHZ51
MA Modern Languages, Literature & Culture: Narratives of Conflict - Spanish	MHZ52
MA Modern Languages, Literature & Culture: Narratives of Conflict - Spanish (PT)	MHZ53
H Cert Spanish & Latin American Literature	MHZ54
MLitt (Research)	MHZ04 (FT) MHZ05 (PT)
PhD Spanish	MHZ02 (FT) MHZ03 (PT)

Course	PAC
THE LANGUAGE CENTRE	
Dioplóma Iarchéime san Aistriúchán agus san Eagarthóireacht (Ar Líne)	MH51C
MA san Aistriúchán agus san Eagarthóireacht (Ar Líne)	MH53C
THEORETICAL PHYSICS	
MSc Mathematical Science	MHQ52
MSc Mathematical Science (PT)	MHQ53
H Dip Mathematical Science	MHQ54
H Dip Mathematical Science (PT)	MHQ55
MSc Mathematical Physics	MHQ06 (FT) MHQ07 (PT)
PhD Mathematical Physics	MHQ04 (FT) MHQ05 (PT)

How to Apply

Applications are made using the Postgraduate Application Centre (PAC) Online portal: www.pac.ie/maynoothuniversity

APPLY

Applicants need to register their details on the PAC website before selecting their course. Programmes should be selected in order of preference. There is a €50 fee (non-refundable) to apply for up to three postgraduate programmes at Maynooth University.

The following information **MUST** be uploaded to your online application form (or be forwarded to PAC, 1 Courthouse Square, Galway, Ireland) before your application will be considered:

- Certified copies of all official transcripts of results for all non-Maynooth University qualifications listed **MUST** accompany the application. Non-Maynooth University applicants who are currently completing undergraduate/postgraduate programmes and have not completed final exams should submit certified copies of academic transcripts with details of subjects studied and results to date. Final results and the proposed date of conferring should be submitted as soon as they become available.
- Non-Maynooth University students must provide two academic references and a copy of a birth certificate or valid passport. All documentation which is not in English must be officially translated to English.



LATE APPLICATIONS

Students are encouraged to apply as early as possible. Each postgraduate programme has an indicated closing date.

Where programme places have not been filled it may be possible to make a late application. Please contact the Department where you wish to study to confirm whether you can make a late application.

Open Days 2018:
24 & 25 November 2017
28 April 2018
23 June 2018

Postgraduate Open Day
27 February 2018, 3 – 8pm



Fees

EXPERTISE

The Fees and Grants office's primary function is the setting and collection of all student fees due to the University. Our aim is to provide as much information and practical advice for Undergraduate & Postgraduate students pertaining to the SUSI, payment of fees, refunds, tax relief, stipends, research funding, etc. Please check the University Fees & Grants Office website on a regular basis for up-to-date information for each Academic year www.maynoothuniversity.ie/student-fees-grants.

Postgraduate Fees & Grants information - www.maynoothuniversity.ie/student-fees-grants/postgraduate. A non-refundable deposit of €200.00 is required when you accept your place on your programme.

Please feel free to call in person to the Fees & Grants Office, at any stage throughout the Academic year, where any member of the team will gladly assist with your query or contact us by email at Fees.office@mu.ie.



Entry Routes

1. UNDERGRADUATE

When planning postgraduate studies, it is essential for undergraduates to start to consider their postgraduate course options early in the final academic year of their BA/BSc degree studies.

The PAC application system is now open for 2018 applications and sample module content, entry requirements and closing dates are available online at: www.maynoothuniversity.ie/postgraduate

Undergraduates should review current course timetables to get an understanding of the time commitment involved in their preferred programmes, as this will help with financial planning for postgraduate studies. While programmes may run with different modules and timetables may change from year to year, the current information provides the most up-to-date guidance on what to expect from the postgraduate experience.

At Maynooth University, prospective students are encouraged to make contact with course coordinators to ask for more information about programme content in advance of making an application.



2. POSTGRADUATE CONVERSION COURSES

Most prospective postgraduate students don't realise that it is possible to move into a new area of study via a conversion Master's programme. These popular programmes offer level 8 Bachelor degree holders (or equivalent) a 'no experience necessary' path into a new field of expertise.

Maynooth University is offering conversion opportunities in 2017 through its Master's programmes in Business Management, IT Enabled Innovation, Design Innovation, Economics (2 year programme), Finance (2 year programme), Accounting (2 year programme), the Higher Diploma in Legal Studies and the Professional Master of Education (primary and secondary teaching).

The MA Digital Humanities programme is open to Arts graduates and provides a 90 hour programming course and a placement in a cultural heritage institution.

The transferable skills content offered across all our Master's programmes prepares our graduates for the labour market.



3. RECOGNISING PROFESSIONAL EXPERIENCE

Life-long education

Candidates without an academic degree, a Taught Master's qualification is still an option at Maynooth University. Through its 'recognition of prior learning' (RPL) policy, Maynooth University acknowledges the value of labour market participation to life-long education.

Our RPL policy facilitates a review of the professional skills and relevant life experience of the individual, particularly for applicants without significant academic qualifications. In the last 6 months, 13 RPL/non-standard entry applications for postgraduate study have been approved for individuals who do not hold a primary degree or who hold a level 7 degree.



OPTIONS

Starting my career as a graphic designer in the '80's, there was just no academic route for me to take, as it was all about on-the-job training. I never thought a Master's would be something I would be considered for, let alone graduate at the top of my class. It was incredible to think that my career as a whole was considered as part of my application.

As a self-employed professional working alone, having the opportunity to work in teams with graduates from marketing, business, IT and product design as part of the Master's in Design Innovation was fantastic. Having the MSc opened doors to new clients and projects and broadened my skills for work in new areas.'

Mike Murray, MSc

Broadened my skills





LEADING

Interdisciplinary research and collaboration

Dr. Rosemary Monahan
Department of Computer Science

What is the most surprising thing to date you've learned from your research?

What surprises me most is the level upon which we, as a society, are already dependant on software that isn't sufficiently robust, even in areas as critical as transportation and medical devices. Software safety and reliability emerges from the core of computation and formal software development, where we use mathematical and formal models to derive software. In this fast moving world with new languages, tools and techniques continuously evolving, it is easy to forget that this solid grounding in logical reasoning and problem-solving skills is fundamental for a career in Computer Science, both in research and in the software industry.

What's unique about Maynooth University?

Maynooth University is unique in the community of people and disciplines that it brings together. This is achieved through a range of international programmes, diverse entry routes into degree programmes, links with local schools and links with local industry. For example, our postgraduate programmes in Computer Science offer integrated programmes with other European universities, as well as opportunities to complete internships in international research laboratories and local software industries.

What's your greatest ambition for your own research and that of your postgraduate students?

Unreliable software costs money and, in too many cases, costs lives. My ambition is to improve our interaction with technology by increasing software dependability and reliability. As our dependence on software increases rapidly, it is vital that we address the issue of enabling the development of dependable software.



Social research that can challenge commonsense paradigms.

Dr. Joe Larragy
Department of Applied Social Studies

What is the most surprising thing to date you've learned from your research?

If appearances were essences, there would be no need for science! So, research can produce surprises, often ones that challenge 'commonsense' views or ideology. For example, public discourse that views population ageing as a catastrophe ill-serves constructive approaches to manageable challenges. Resistance to research findings tends to be greatest where vested interests are threatened, as political denial in the face of research on climate change – which is indeed an unfolding catastrophe – demonstrates. For me, the most exciting aspect of social research is that it can challenge commonsense paradigms.

What's unique about Maynooth University?

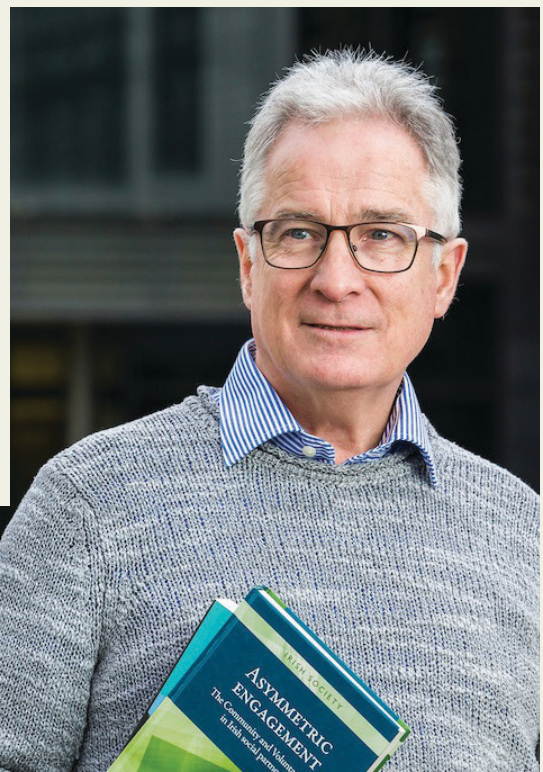
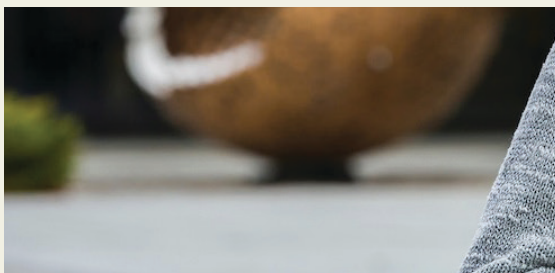
I have seen several sides of the University – at the broadest level, scientific and ethical – which goes back longer than many might know. From its foundation, Maynooth college not only taught theology but also science, best personified in Nicholas Callan, theologian and experimental physicist. Today MU can integrate its ethical and scientific mission by means of interdisciplinary approaches to key challenges.

What is the impact of Maynooth University in the context of national and international research?

Maynooth can exploit the potential for interdisciplinary work, essential to addressing crosscutting global challenges, such as climate change and population ageing, rising inequality, the crises of governance and the rise of authoritarianism.

What's your greatest ambition for your own research and that of your postgraduate students?

Research students, whatever their discipline, should address non-trivial questions and seek to be relevant to key societal and policy challenges. They should also be imaginative and place a value on interdisciplinary collaboration.



International Students

STUDENT EXPERIENCE

In 2016, the University was ranked first in Ireland by international students for excellence in Teaching and Learning, Student Experience and Support Services. In 2015, the University received the Outstanding International Student Satisfaction Award by StudyPortals, one of only five universities in Europe to achieve this accolade.

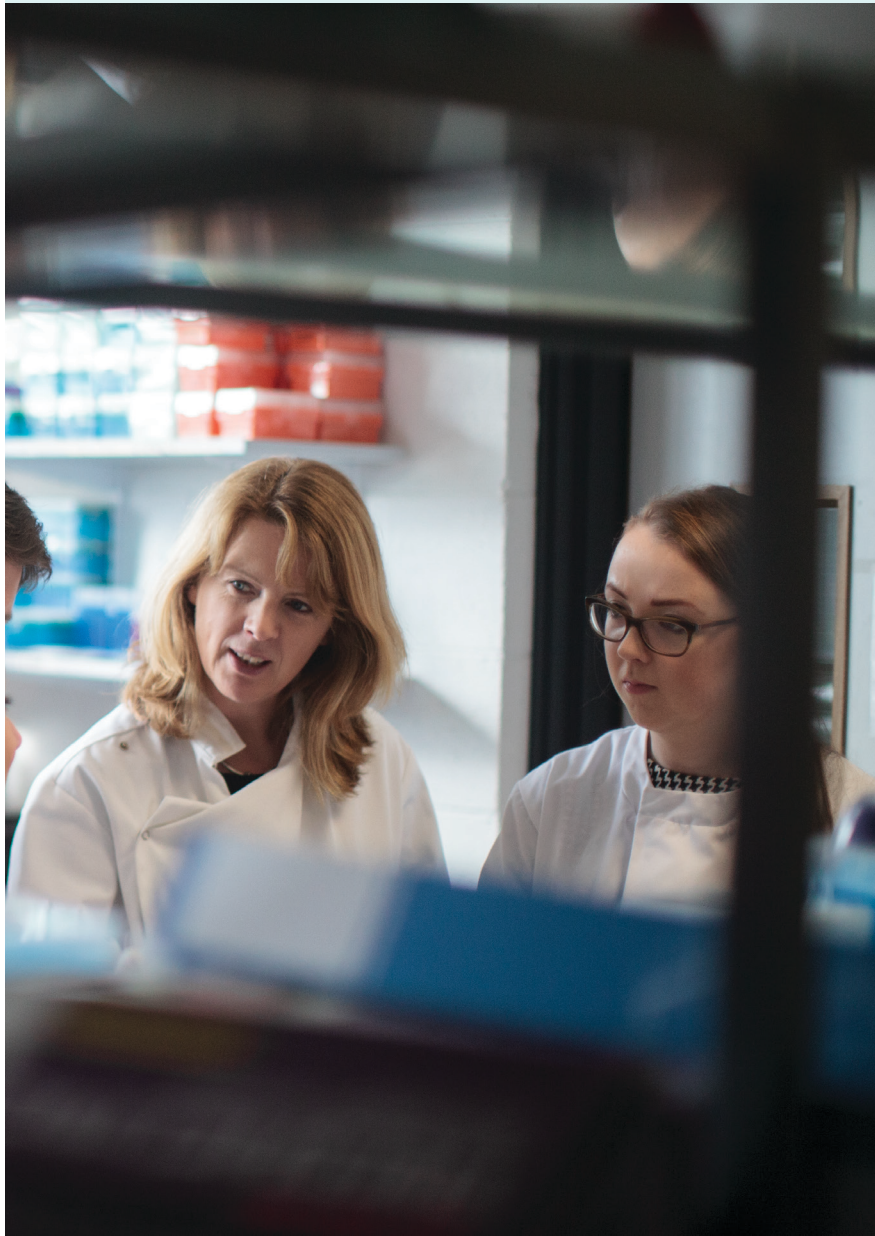
Academic and English-Language Requirements for non-EU citizens

International applicants must have a recognised primary (undergraduate) degree which is considered equivalent to an Irish University primary degree. Some programmes may have additional requirements.

The minimum English-language requirements for postgraduate study are a IELTS 6.5 score, TOEFL (IBT) 92 score or equivalent score.

Non-EU students can submit their applications directly to Maynooth University or through one of the University's trusted educational agents. In cooperation with EduCo International Group, the University offers a postgraduate pathway programme for students who don't meet the academic and English-language requirements for direct entry. For more information, see: www.maynoothuniversity.ie/international/postgraduate





The Graduate Work Visa Scheme

After completing a degree programme at Maynooth University, international students can apply for the Graduate Work Visa Scheme.

This enables students to remain in Ireland for up to two years after they graduate to actively seek full-time employment. During this time, students may also apply for further permission to remain in the state under green card or work permit arrangements.

Financial Aid

North American students (citizens or permanent residents) may apply for US aid to fund their studies at Maynooth University, including the US Federal Direct Loan Program, Sallie Mae private loans, and Veterans Affairs Benefits.

Please see www.maynoothuniversity.ie/international/key-information/us-financial-aid



Scholarships

Over €1.4 million per annum invested in postgraduate scholarships



ACROSS ALL DISCIPLINES

John and Pat Hume Doctoral Awards

Each year, Maynooth University provides up to thirty John and Pat Hume doctoral awards to support prospective students with commencing research studies at the university. Established in honour of John Hume, an alumnus of Maynooth University, and these awards recognise his contribution to Ireland.

There are three levels of award, offering up to €18,000 stipend per annum and full fees for 4 years of study plus expenses. The application process is open to EU and non-EU citizens and both Maynooth and non-Maynooth University graduates.

Closing Date for online applications:

1st May 2018

Apply online:

www.maynoothuniversity.ie/jphawards



TEACHING STUDENTSHIPS

Maynooth University Teaching Studentships

Maynooth University awarded 11 Teaching Studentships in 2017 to postgraduate students commencing their PhD studies. Offering a €9,000 stipend per annum and fees paid over 5 years, these Doctoral students commit to an agreed number of teaching/demonstrating hours for their Departments during their PhD.

In recognition of their workload, Teaching Studentship recipients are given 5 years to complete their funded PhD studies. For more information visit:
www.maynoothuniversity.ie/postgradscholarships

Closing Date: 31st July 2018

FOR MAYNOOTH GRADUATES

Alumni Scholarships

If you are/will be a graduate of Maynooth University and have not undertaken a Taught Master's programme elsewhere, you are eligible for a Taught Master's Alumni Scholarship of €5,000 at Maynooth University.

Apply online at: www.maynoothuniversity.ie/postgradscholarships

Closing: 15th June 2018



SUPPORT

Taught Master's Scholarships

€2,000 Taught Masters Scholarships

Maynooth University offers sixty scholarships of €2,000 cash to support full-time taught Master's study at Maynooth University. These Master's Scholarships are available across all Departments of the university, and they are open to EU and non-EU citizens, and to Maynooth and non-Maynooth graduates.

A 2.1 final honours undergraduate degree result or equivalent is the minimum requirement to apply.

Closing Date: closing 15th June 2018



Apply online
[www.maynoothuniversity.ie/
postgradscholarships](http://www.maynoothuniversity.ie/postgradscholarships)

An Ghaeilge san Ollscoil

GAEILGE

Tá pobal bríomhar Gaeilge anseo in Ollscoil Má Nuad.

Cuirimid ócáidí ar siúl ar an gcampas go rialta do chainteoirí Gaeilge agus do dhaoine a bhfuil spéis acu sa teanga. Bíonn an-tóir ag mic léinn agus ag baill foirne ar ár ranganna Gaeilge. Tá Cuallacht Cholm Cille, Cumann Gaelach na hOllscoile, ar cheann de na cumainn is mó agus is rathúla ar an gcampas.

Oifig na Gaeilge

Tacaíonn Oifig na Gaeilge le húsáid na Gaeilge i measc fhoireann agus mhic léinn. Má tá spéis agat sa Ghaeilge, bí linn agus tapaigh na deiseanna atá ar fáil anseo oifig.nagaeilge@mu.ie

Lean Oifig na Gaeilge ar na meáin shóisialta le teacht ar an nuacht agus ar na hócáidí is déanaí:

📧 @OnaGaeilgeMU

📘 @OnaGaeilgeMU

Oifigeach na Gaeilge Aontas na Mac Léinn (AML)

Cuireann Oifigeach na Gaeilge AML an Ghaeilge chun cinn i measc mhic léinn na hOllscoile gaeilge@nuimsu.com



An Cumann Gaelach

Spreagann Cuallacht Cholm Cille úsáid na Gaeilge ar an gcampas trí imeachtaí agus trí fheachtais éagsúla. Lean an Chuallacht ar na meáin shóisialta:

📘 @Cuallacht

📧 @CuallachtMaNuad

📍 Cuallachtnag

Seomra na Gaeilge, Foirgneamh na nEalaíon

Spás sóisialta do chainteoirí Gaeilge.

Scéim Chónaithe

Cuirtear seomraí in árasáin ar an gcampas thuaidh ar fáil dóibh siúd a bhfuil spéis acu an Ghaeilge a úsáid agus a chur chun cinn ar an gcampas.

Ranganna Gaeilge (ILASP)

Cuirtear ranganna Gaeilge, ag leibhéal éagsúla, ar fáil do mhic léinn (mic léinn idirnáisiúnta san áireamh). Bíonn an deis ag rannpháirtithe scrúdú Gaeilge TEG (Teastas Eorpach na Gaeilge) a dhéanamh agus cáilíocht phroifisiúnta a fháil, rud a chuireann le deiseanna fostaíochta san earnáil phoiblí, in earnáil an oideachais agus eile. Tuilleadh eolais ó teanga@mu.ie

Coiste na Gaeilge

Oibríonn an coiste ar mhaithe le cur chun cinn na Gaeilge in obair laethúil na hOllscoile.

IRISH

There is a vibrant Irish language community here in Maynooth University.

We hold regular events on campus for Irish language speakers and for those with an interest in the Irish language. Our Irish language classes are very popular amongst students and staff. Cuallacht Cholm Cille, the University's Irish language society, is one of the largest and most successful societies on campus.

The Irish Language Office

The Irish Language Office supports the use of the Irish language among staff and students. If you have an interest in Irish, join us and make the most of the opportunities available here oifig.nagaeilge@mu.ie

Follow the Irish Language Office on social media for the latest news and events:

📧 @OnaGaeilgeMU

📘 @OnaGaeilgeMU

SU Irish Language Officer

The Students' Union Irish Language Officer promotes Irish among the student body gaeilge@nuimsu.com

Irish Language Society

Cuallacht Cholm Cille promotes the use of Irish through various events and campaigns. Follow them on social media:

📘 @Cuallacht

📧 @CuallachtMaNuad

📍 Cuallachtnag

Irish Language Room, Arts Building

A social space for Irish language speakers.

Irish Language Residency Scheme

Rooms in apartments on the north campus are available to those who wish to speak and promote Irish on campus.

Irish Language Classes (ILASP)

Irish language classes, at various levels, are available to students (including international students). Participants have the option of taking a TEG (Teastas Eorpach na Gaeilge) examination and getting a recognised qualification in the Irish Language, which enhances graduates' employability in the public sector, in education and in many other areas. Email teanga@mu.ie for further information.

Irish Language Committee

The committee works to promote the use of Irish in the day-to-day affairs of the University.

Irish in the University

Campus Facilities

Maynooth University has a reputation for excellence in teaching and learning and supporting for students to challenge themselves, with access to a senior academic staff which is second to none.



INVESTMENT

Maynooth University offers a large, historic campus ideal for postgraduate studies. In recent years, Maynooth has invested in an impressive capital building project, including a new state-of-the-art Library building, student accommodation, a bespoke Education building and an award-winning enterprise and technology hub.



LIBRARY

A key resource for postgraduate students, the Library offers a wealth of support, services and information. Our dedicated team of librarians supports students and researchers in finding and using information as part of their studies. Further information can be found here http://nuim.libguides.com/support_training

Services include book borrowing, laptop and kindle lending, a dedicated Postgraduate Study Room, bookable Group Study Rooms and a range of study spaces equipped with power, and Wi-Fi facilities.

Library resources include print and electronic formats, with over 470,000 printed publications and online access to the full text of 107,615 e Journals and 652,097 eBooks.

The Library also holds a unique collection of rare books, pamphlets, manuscripts and archives dating back to the 15th century that is available in both the JP2 and Russell Libraries.



WRITING CENTRE

The Writing Centre offers free, friendly, non-judgmental writing help to postgraduate students. Students can make an appointment to meet with a Writing Centre tutor to discuss their work or their writing processes. The Writing Centre also supports the University's interdisciplinary doctoral writing group, run by doctoral researchers, for doctoral researchers.



THE CENTRE FOR IRISH LANGUAGE

The Centre for Irish Language at Maynooth University provides quality language teaching and training. The Centre's work has developed to include expertise in language testing, training of professional translators and training of teachers of Irish and adult learners.



CAREER DEVELOPMENT CENTRE

The Career Development Centre is available to help you at every stage throughout your studies, providing: a student-focused, professional and informative service careers education, information, advice and guidance; a drop-in Help desk; help with career planning, feedback on CV preparation and help with job applications.



Getting to Maynooth

Located in the heart of Ireland's only university town, we are based just 25 kilometres from the city of Dublin.

Maynooth is at the heart of a popular regional village with a wide selection of dining and recreational options.



TRAVEL

Approximately
1,400 parking
spaces on campus.

Irish Rail

The Sligo train line passes through Maynooth to Dublin via Collooney, Ballymote, Boyle, Carrick-on-Shannon, Dromod, Longford, Edgeworthstown, Mullingar, Enfield and Kilcock.

Traveling to Maynooth

Maynooth is served by two Dublin Bus routes, the 66 and the 67. Bus Eireann services also link to Maynooth, and range of bus operators organise daily and weekly coach services to the campus.



ACCOMMODATION & AMENITIES

Approximately 1,200 students live on campus. The main campus accommodation is situated just a short walk from all lecture, sports and recreational facilities on the North campus. Postgraduates who are continuing to a second or subsequent year of studies may book campus rooms in the Quiet Zone (expressions of interest open online at the accommodation website from 12-18 February 2018) or on the general Continuing Students Booking day on 13th April 2018 – online on the accommodation website. New Postgraduates or postgraduates in their first year of studies will be able to book rooms on campus on 14 August 2018 once they have their academic offer. This will open online on the accommodation website. (www.maynoothuniversity.ie/accommodation)

Home Finder Service

There are many accommodation options available locally from self-catering in owner-occupied homes to private rented apartments and houses. We also offer an online Listing Service which assists property owners and Maynooth students initial contact: www.maynoothstudentpad.ie

Occasional or Guest Accommodation

Your programme may only run 2-3 days a week on campus. It may suit your needs to commute to campus weekly and stay in our affordable temporary on- campus guest accommodation.

Postgraduate students may avail of the guest accommodation on campus for €28 a night (discounted rate).

DINING

In addition to the restaurants and eateries in Maynooth village, the campus dining options include:

- The Little Coffee Co., Arts Building
- Subway, John Hume Building
- The Kitchen, Phoenix Building
- The Living Room, Phoenix Building
- Starbucks, JP 11 Library
- Students' Union Bar, North Campus
- Pugin Hall, St. Patrick's House

SPORTS FACILITIES

Sports halls badminton, basketball, fencing, karate, raquetball, aerobics, circuit training and yoga.

- Fitness centre
- Fully equipped gym
- Natural turf playing fields for Gaelic football, hurling, soccer, camogie and rugby
- River Liffey canoeing and kayaking
- Floodlit all-weather playing pitch
- Golfing and horseriding on the Carton Estate





PEOPLE

Engaged learning on an ivy-covered campus.

Dr. David Lederer
History Department

What is the impact of Maynooth University in the context of national and international research?

Maynooth's involvement in national research projects has dovetailed with Ireland's expanding role in the European Union and the broader international research community at large. We regularly win major international honours for our scientific contributions to human knowledge and have trained generations of national active scholars, bureaucrats, entrepreneurs, teachers and other specialists who have moulded and continue to mould Irish society.

What in your experience defines third-level education?

Universities are here to guide social change through third-level research.

What's your greatest ambition for your own research and that of your postgraduate students?

Really quite simple: Research is ultimately about people.

What's unique about Maynooth University, in your opinion?

There is time to think. In a sea of frenetic modern activity, where life passes by frantically and largely virtually, Maynooth remains an oasis of calm. We avoid many flavour-of-the-month fads and concentrate on the original Socratic process of engaged learning on an ivy-covered campus with architectural treasures dating back to the 12th century.



What is unique about studying at Maynooth?

The variety of courses offered from all of the different aspects of global health, from geography to anthropology. We were able to explore the area from every angle to see just where we would fit.

What are the key skills you learned while at Maynooth that have influenced your career, or indeed, your life?

Hands down, the research skills and the ability to give a presentation in front of 150 2nd years, those are things that have to be practiced again and again! I loved that the course got us all to work in groups, individually, and really pushed us to share that knowledge. I have to do a lot of public speaking on subjects that I don't know too much about, and the research skills I learned at Maynooth have helped me to do a quick analysis so I'm able to confidently speak and answer whatever questions come my way!

What does your current role involve?

I research and present legislation on a variety of subjects (anything from tourism to education to health) and counsel my boss on what he should support on the floor of the chamber. I also meet with advocacy groups to discuss what their priorities are. I attend legislative hearings, present testimony, and work with constituents to fix their legislative problems.

What advice would you give to Maynooth University students entering the job market, either generally speaking or in regard to your specific career sector?

Don't give up! It took me about 2 months to find the job that I'm in today. But I absolutely love it! I have also been able to work with a non-profit organisation as a global health fellow, which keeps my degree relevant. Sometimes you don't end up doing what you thought you would be doing, but I know that this job is going to lead me to the department of public health, where I hope to work in infection control for the state of Massachusetts. Maybe someday I'll work at the federal level, where I can help coordinate disaster relief globally!



LEADING

Research skills and knowledge

Rita Murphy
Chief of Staff
Massachusetts House of Representatives



IMPORTANT DATES

Open Days 2018:

28 April 2018

23 June 2018

23 & 24 Nov 2018

Postgraduate Open Day

27 February 2018

3 – 8pm

If you would like to visit Maynooth University but are unable to attend one of our Open Days, it is possible to arrange to meet a Department to discuss prospective postgraduate studies. Please contact us.

Email graduatestudies@mu.ie

Phone 00 353 1 708 6018



CONTACT

Website:
[www.maynoothuniversity.ie/
postgraduate](http://www.maynoothuniversity.ie/postgraduate)

Twitter:
[@mu_postgrad](https://twitter.com/mu_postgrad)

Facebook:
www.facebook.com/postgraduate

Email:
graduatestudies@mu.ie

Phone:
00 353 1 7086018



Design by
Red&Grey

2018



Maynooth University Postgraduate Studies